



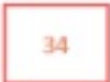




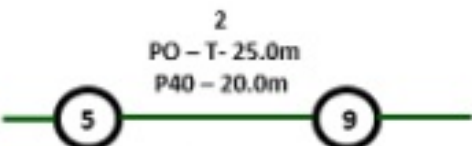
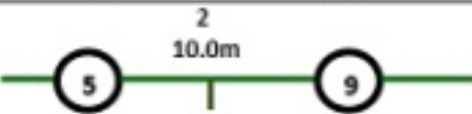





## Indicative Plans

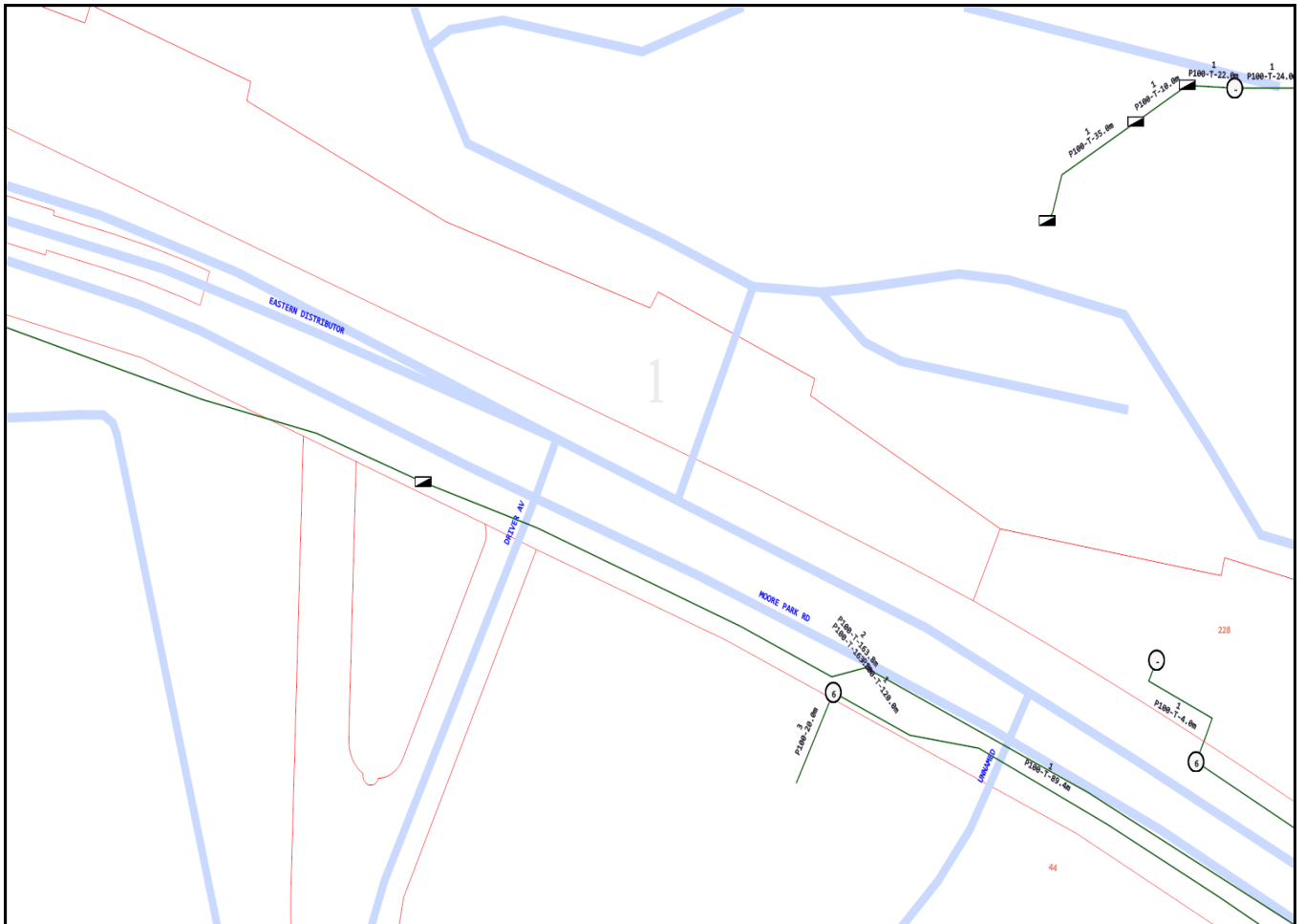
<b>Issue Date:</b>	10/06/2020	
<b>Location:</b>	Lang Rd , Centennial Park , NSW , 2021	

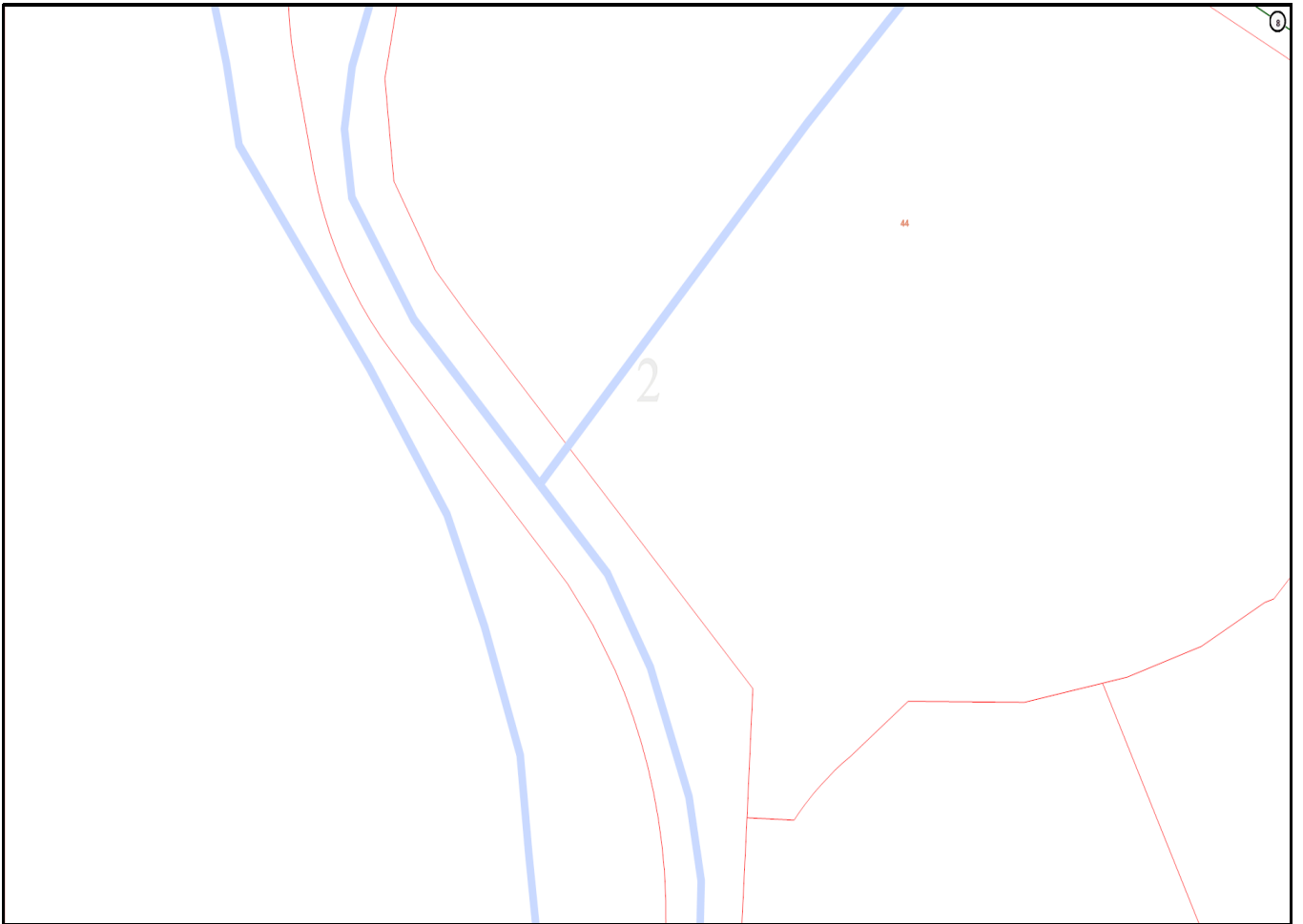
2	10
3	11
4	12
5	13
6	14
7	15
8	16

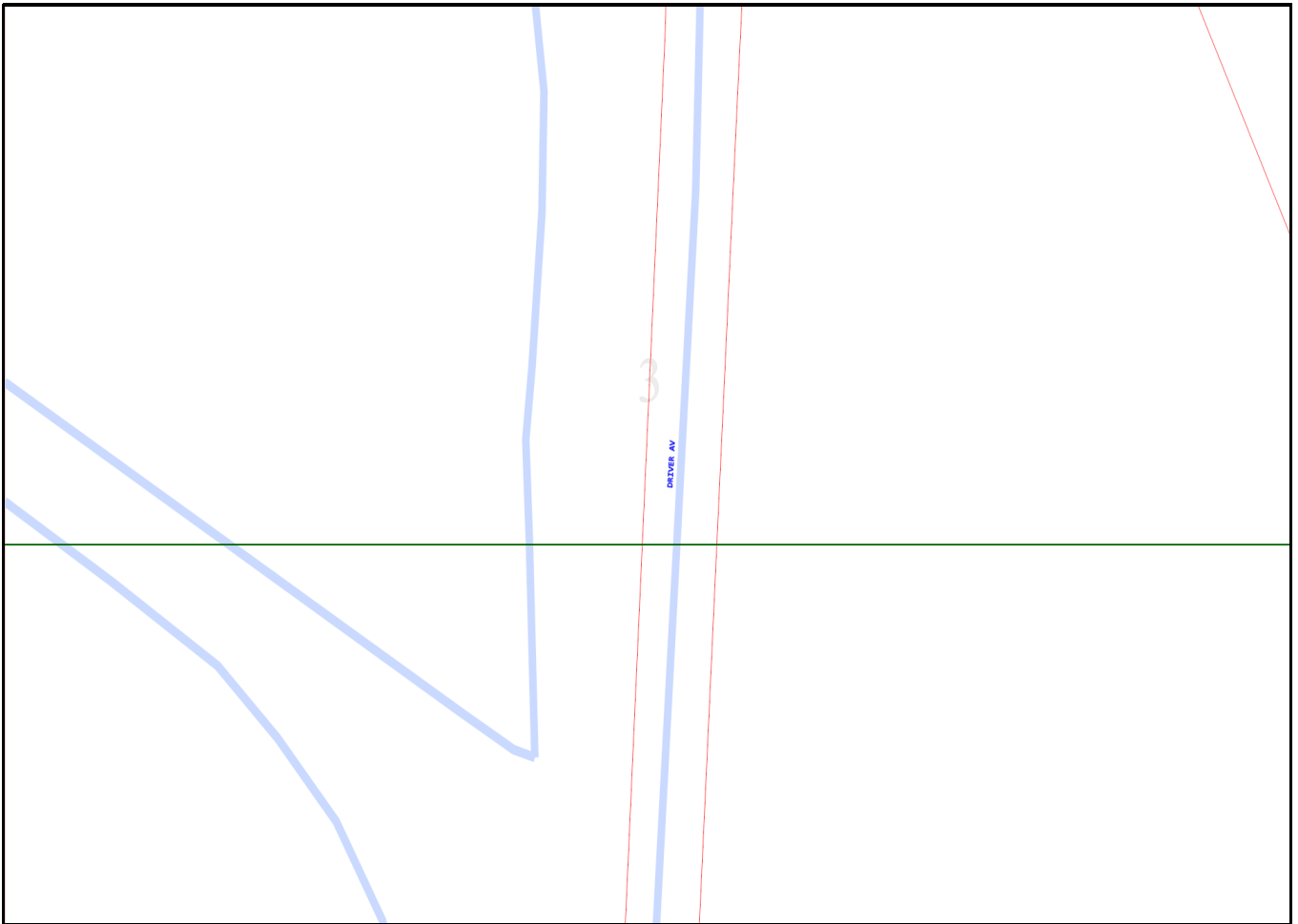


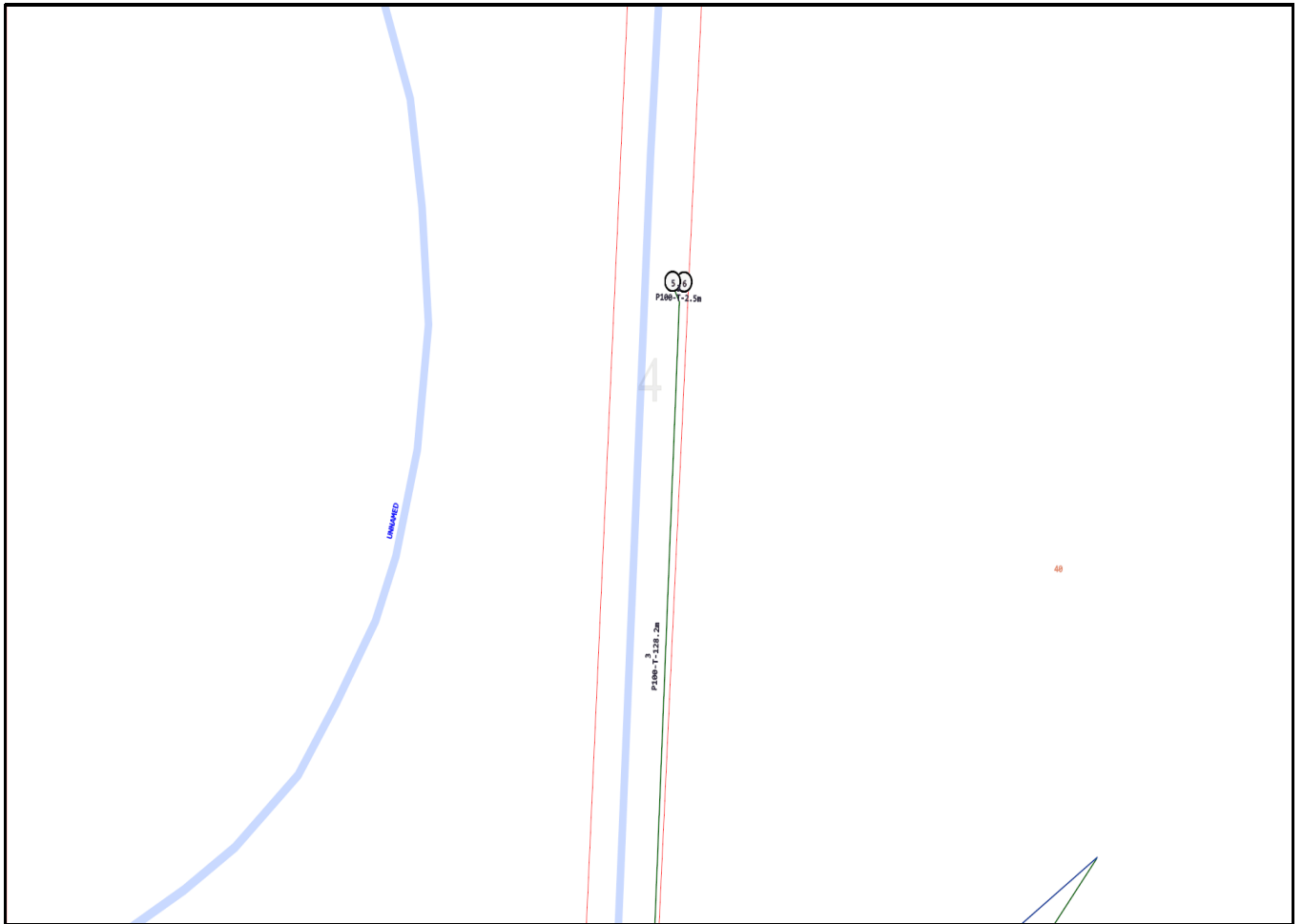
## LEGEND

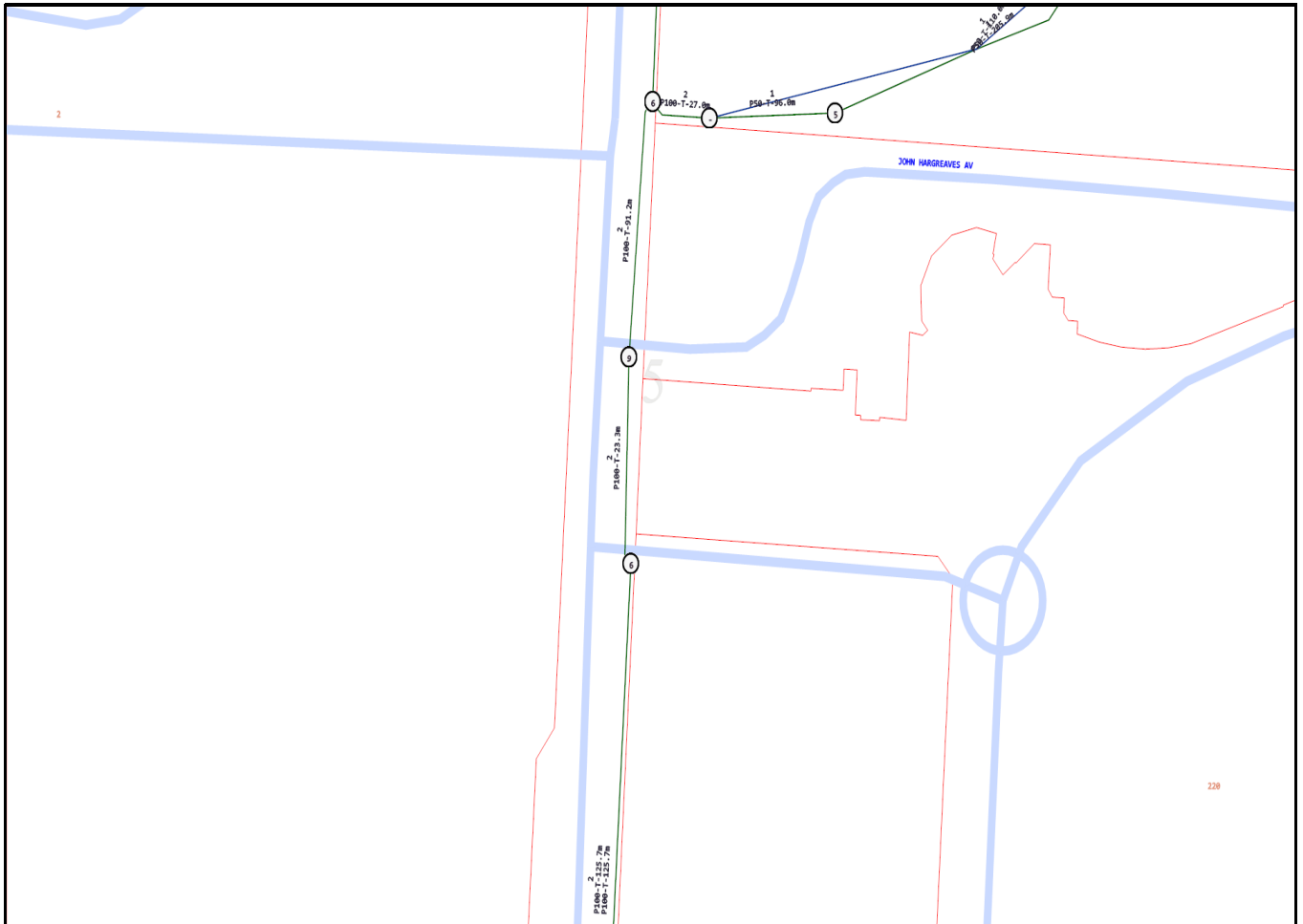
	Parcel and the location
	Pit with size "5"
	Power Pit with size "2E". Valid PIT Size: e.g. 2E, 5E, 6E, 8E, 9E, E, null.
	Manhole
	Pillar
	Cable count of trench is 2. One "Other size" PVC conduit (PO) owned by Telstra (-T-), between pits of sizes, "5" and "9" are 25.0m apart. One 40mm PVC conduit (P40) owned by NBN, between pits of sizes, "5" and "9" are 20.0m apart.
	2 Direct buried cables between pits of sizes, "5" and "9" are 10.0m apart.
	Trench containing any <b>INSERVICE/CONSTRUCTED</b> (Copper/RF/Fibre) cables.
	Trench containing only <b>DESIGNED/PLANNED</b> (Copper/RF/Fibre/Power) cables.
	Trench containing any <b>INSERVICE/CONSTRUCTED</b> (Power) cables.
	Road and the street name "Broadway ST"
<p data-bbox="363 1861 443 1895">Scale</p>	<p data-bbox="679 1816 1139 1850">0 20 40 60 Meters</p> <p data-bbox="1094 1861 1187 1895">1:2000</p> <p data-bbox="1023 1895 1259 1928">1 cm equals 20 m</p> 

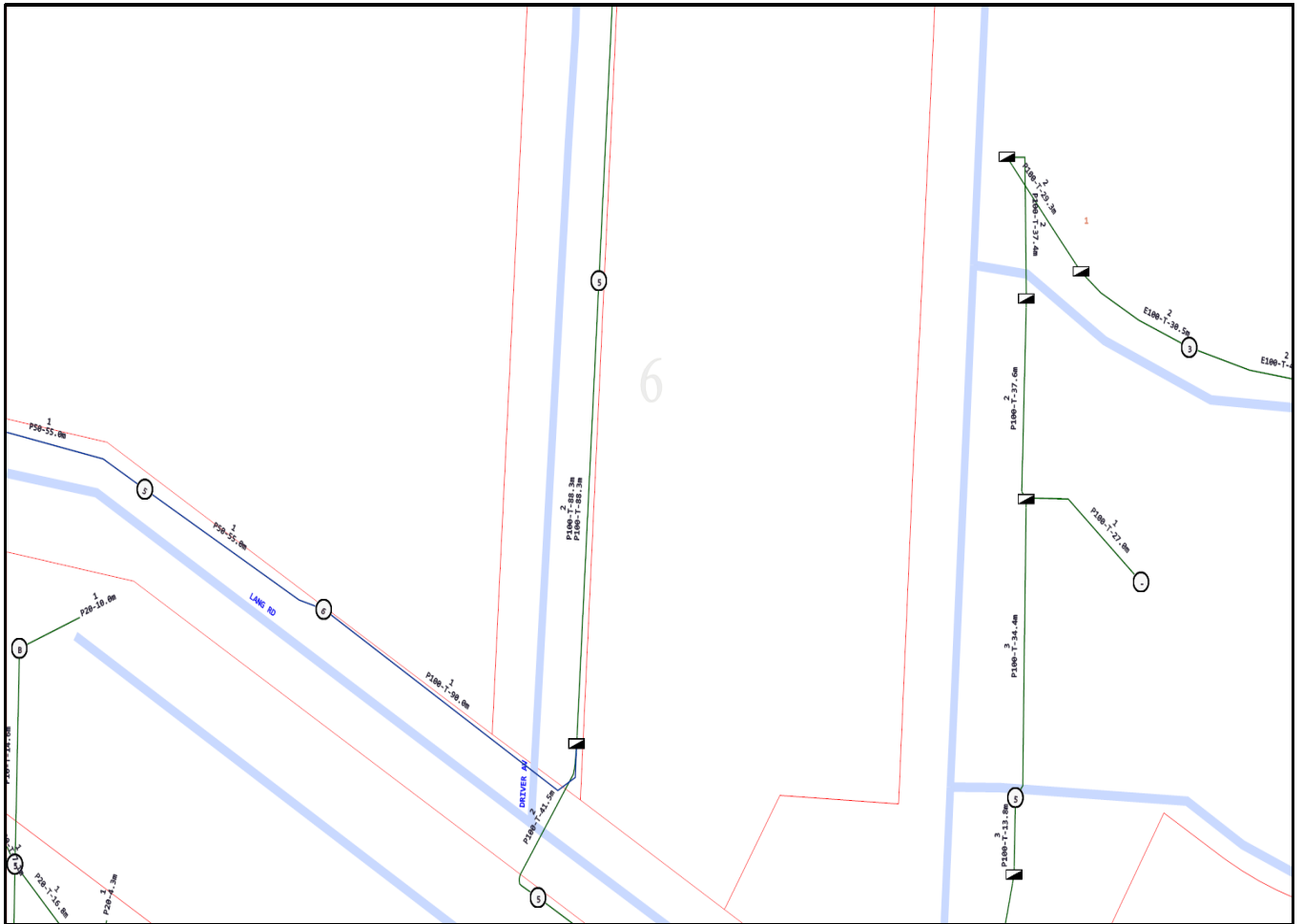




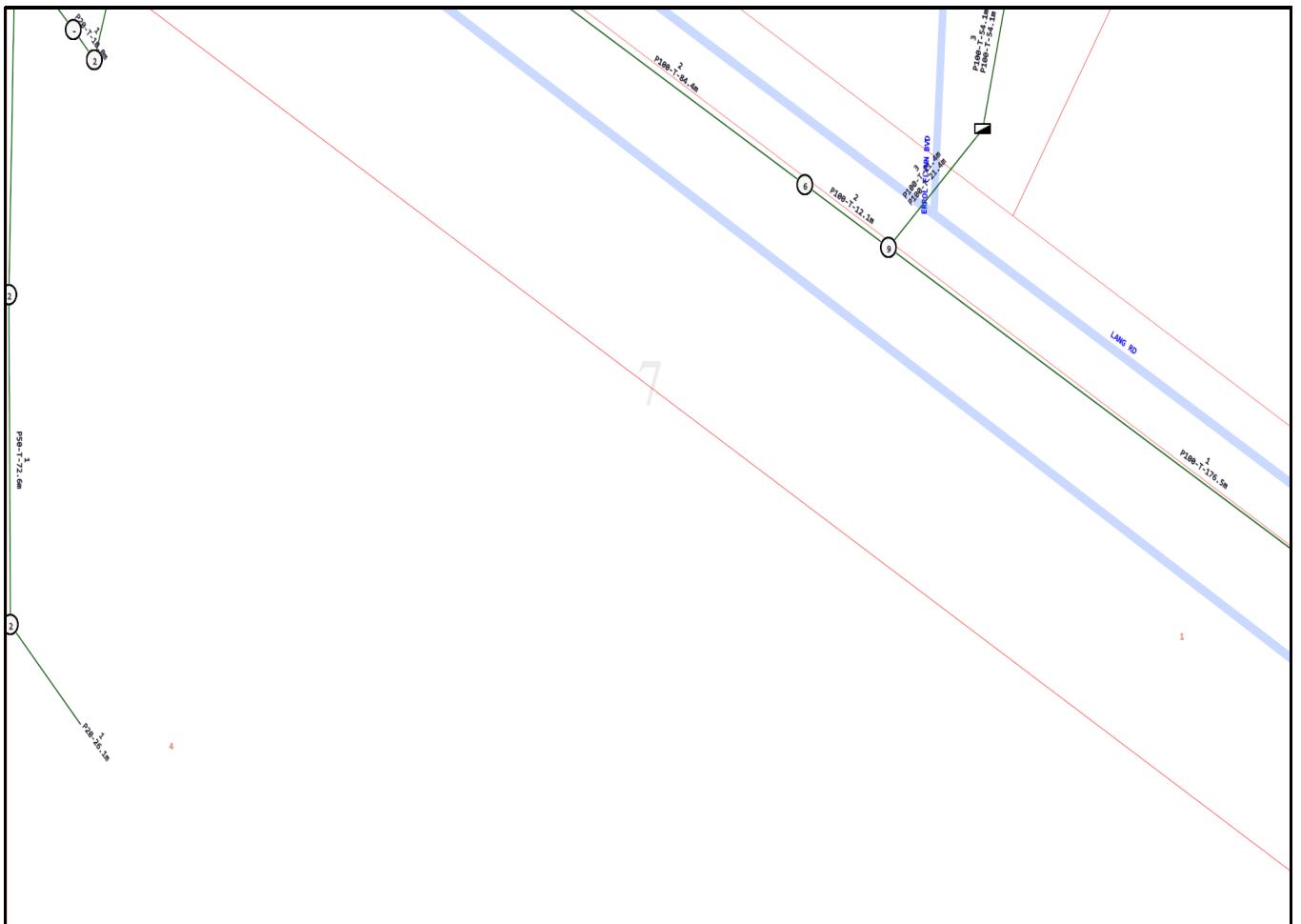


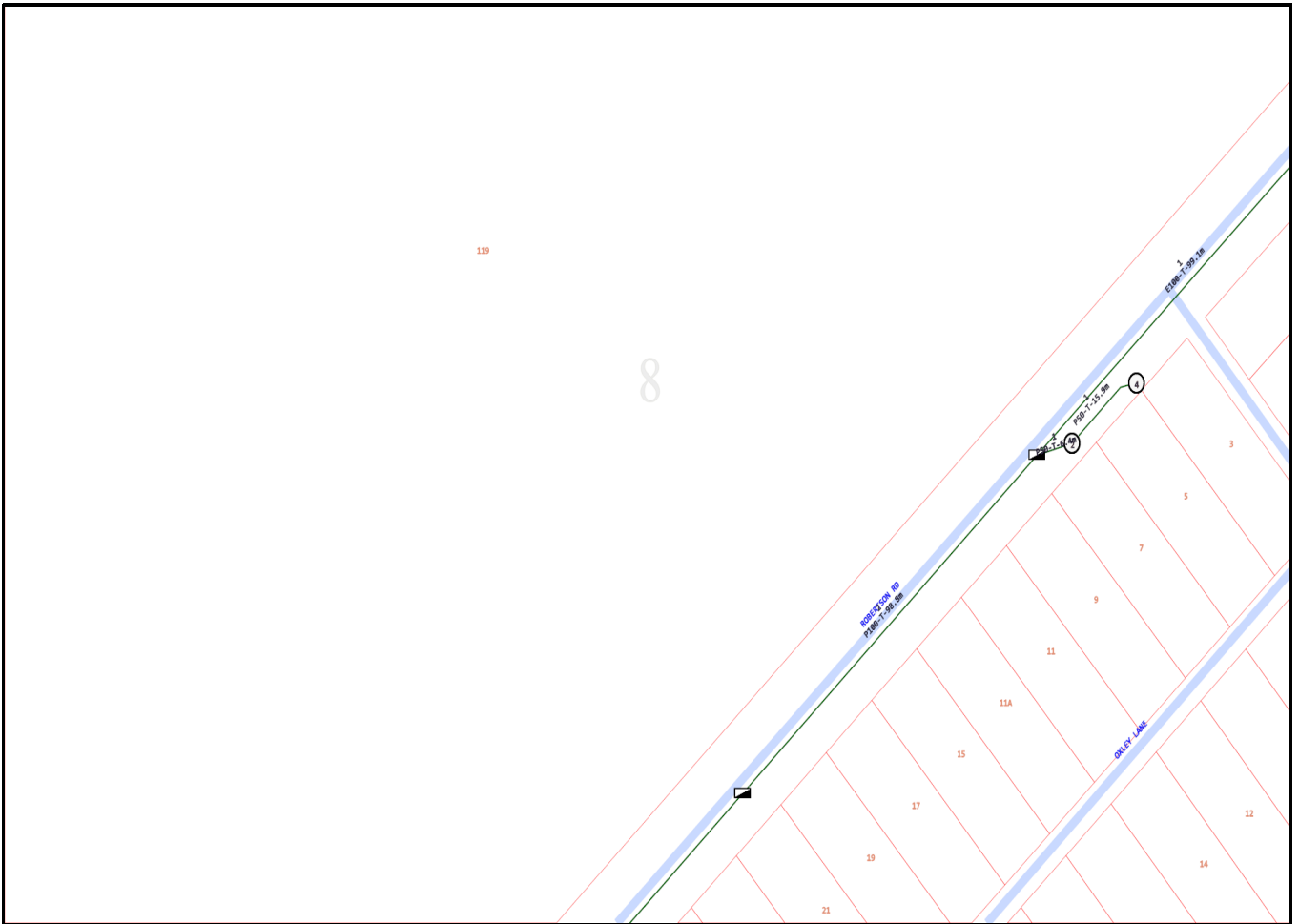


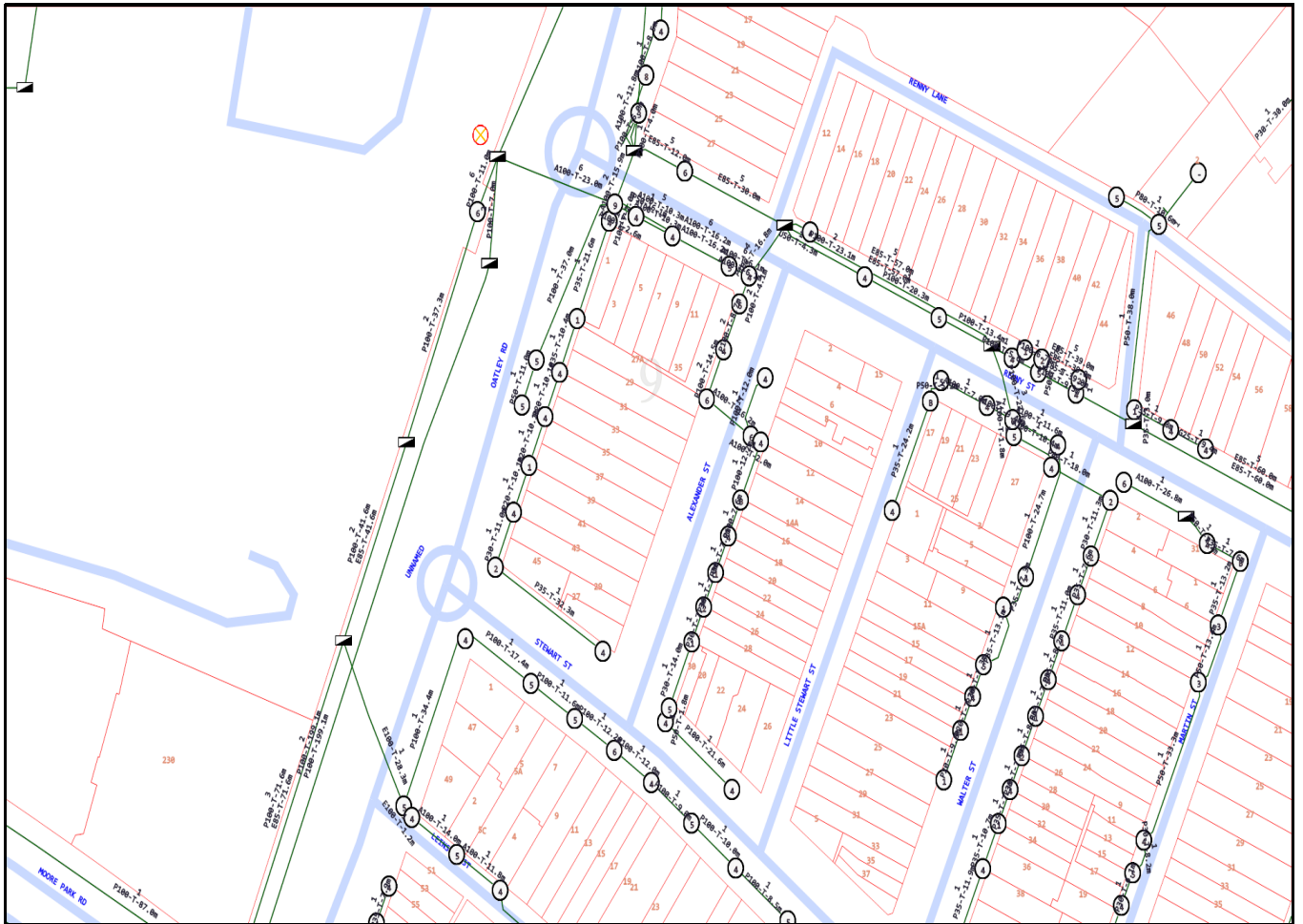


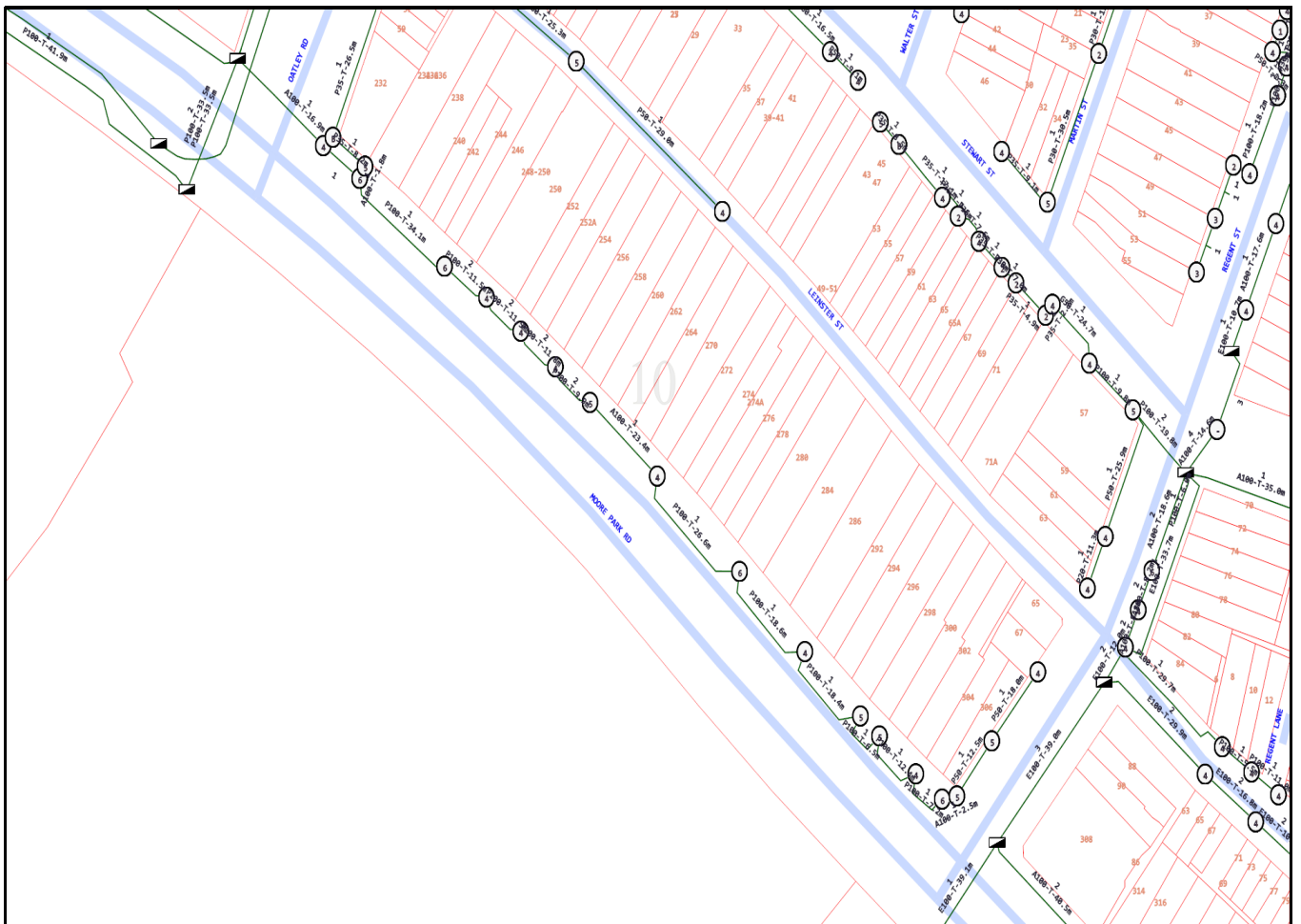


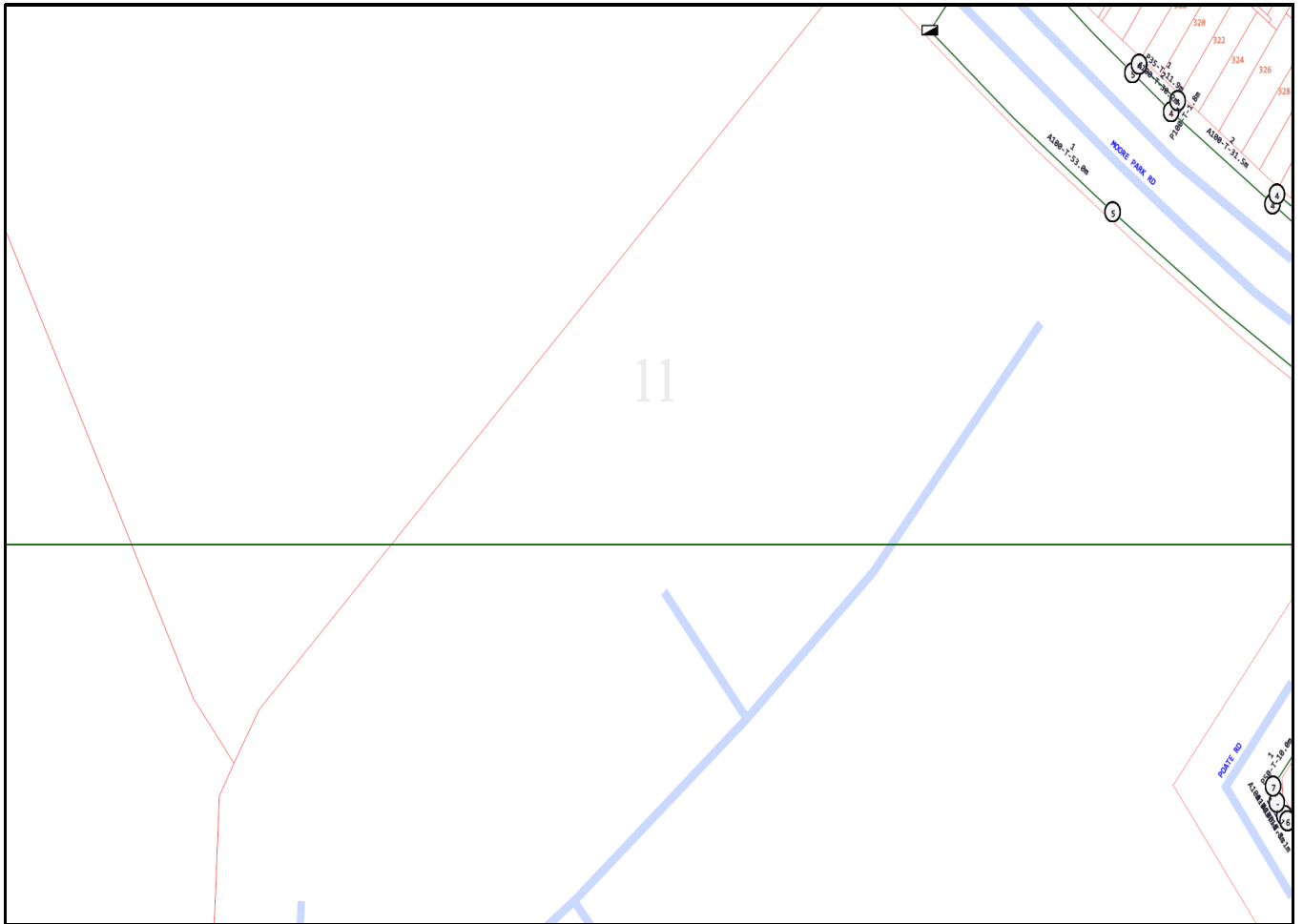


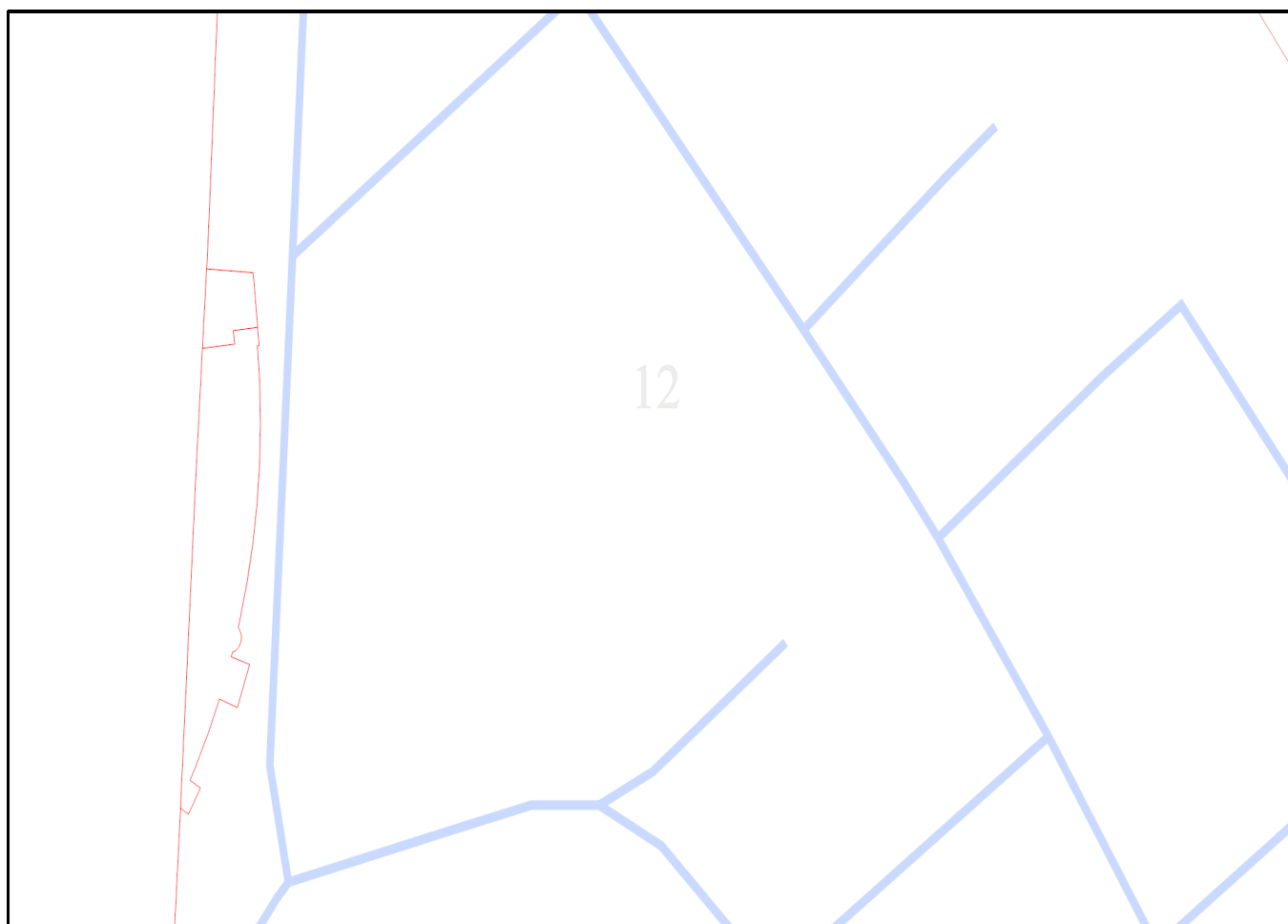


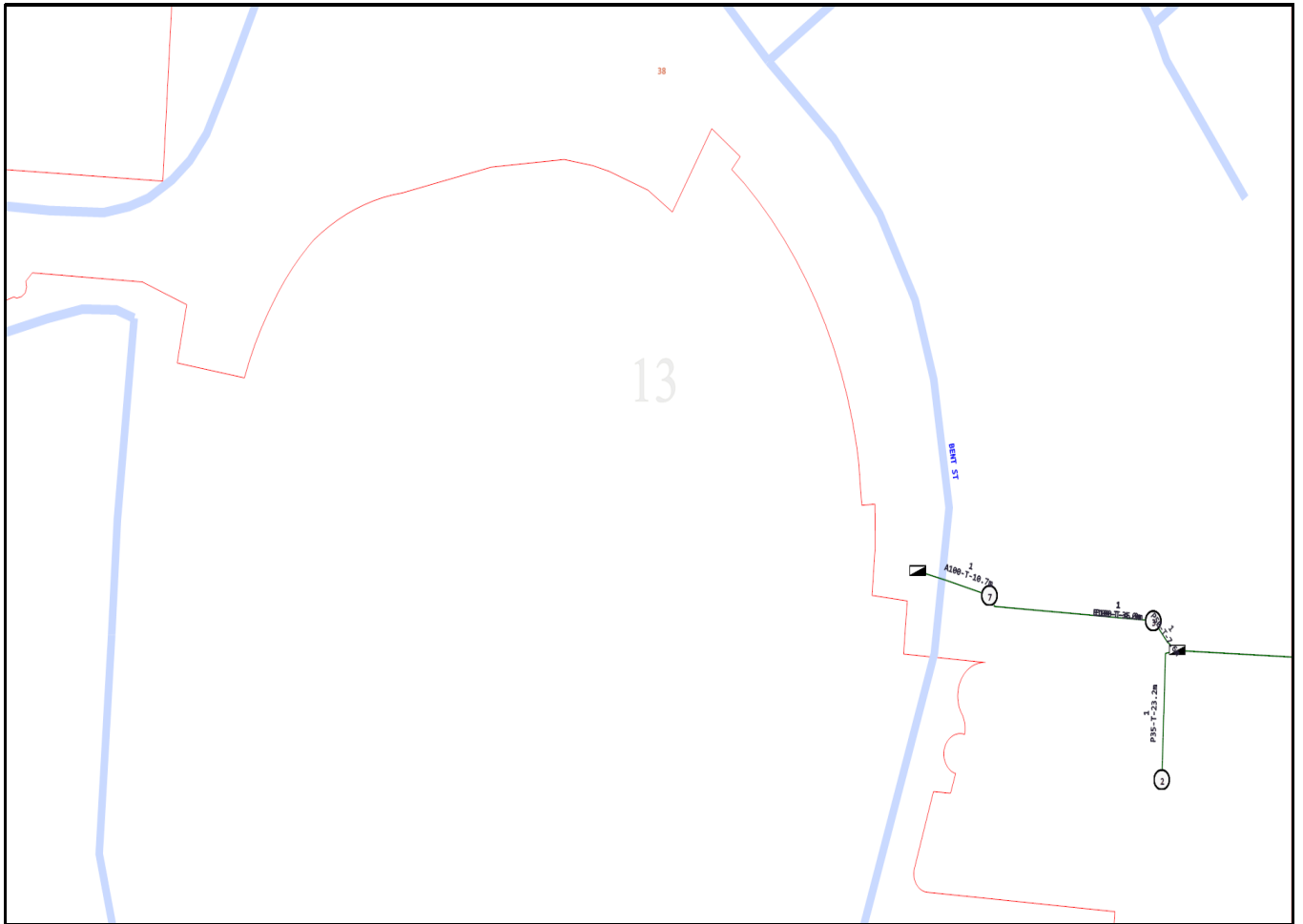


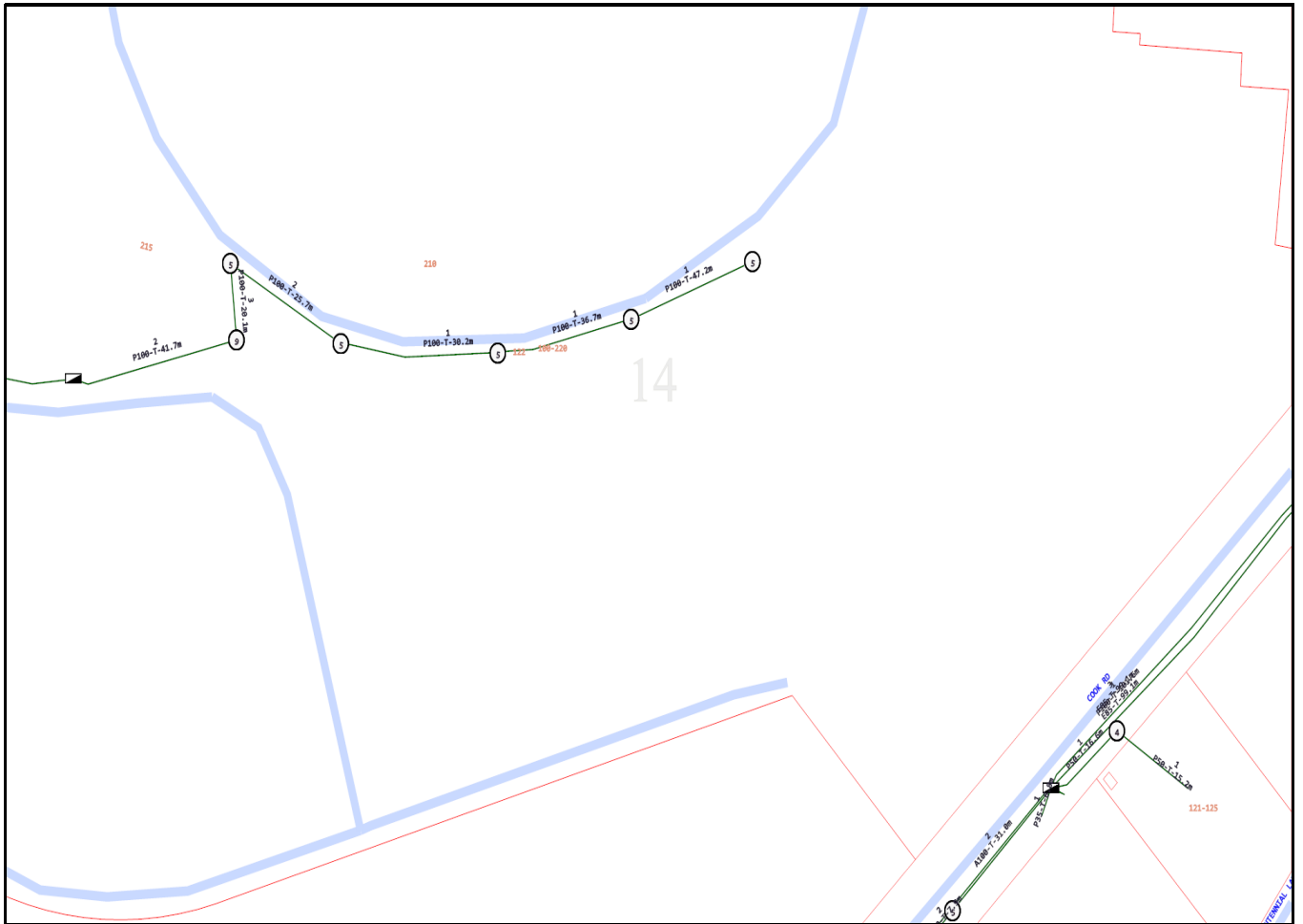




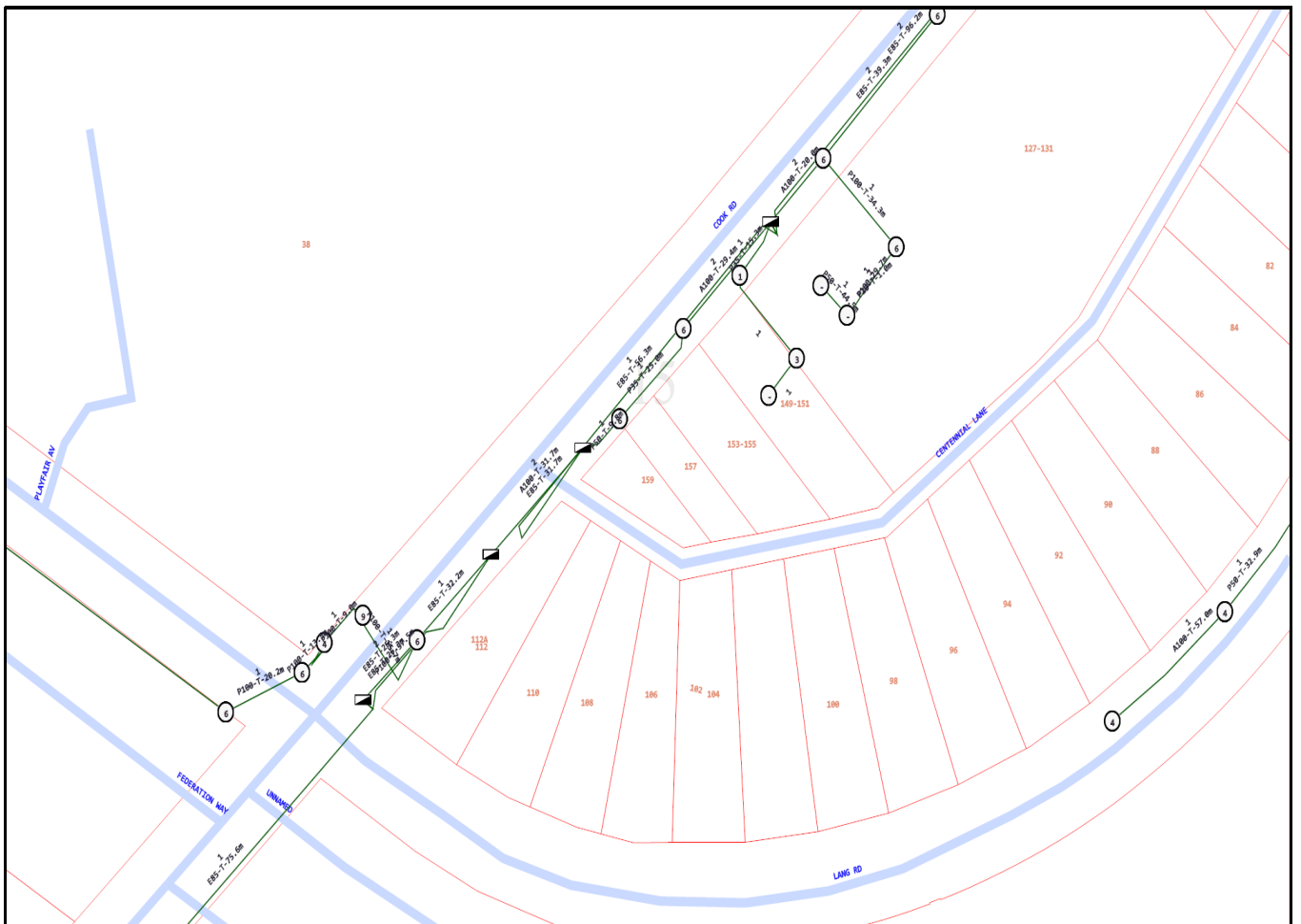


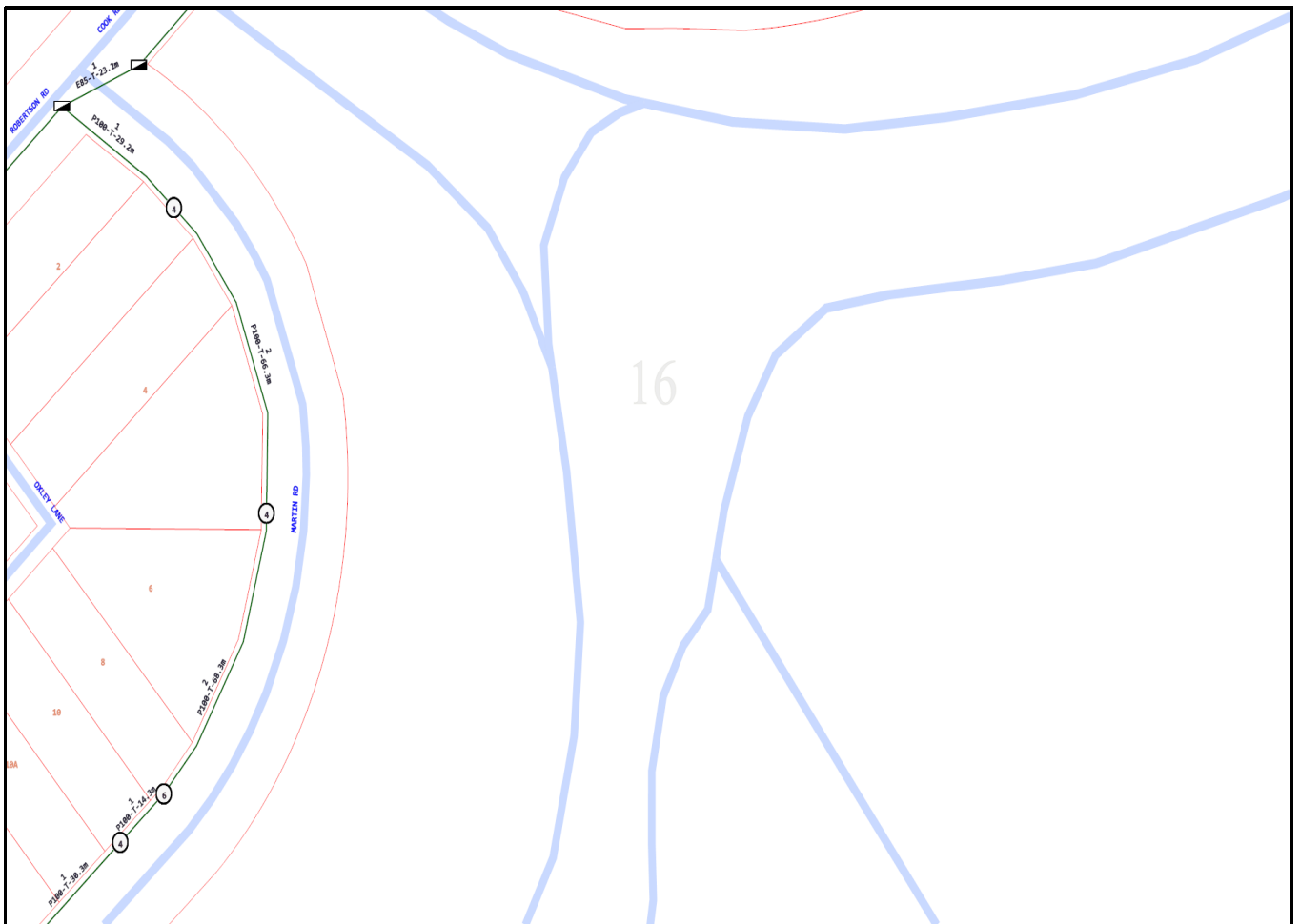












## Emergency Contacts

You must immediately report any damage to **nbn**<sup>TM</sup> network that you are/become aware of. Notification may be by telephone - 1800 626 329.