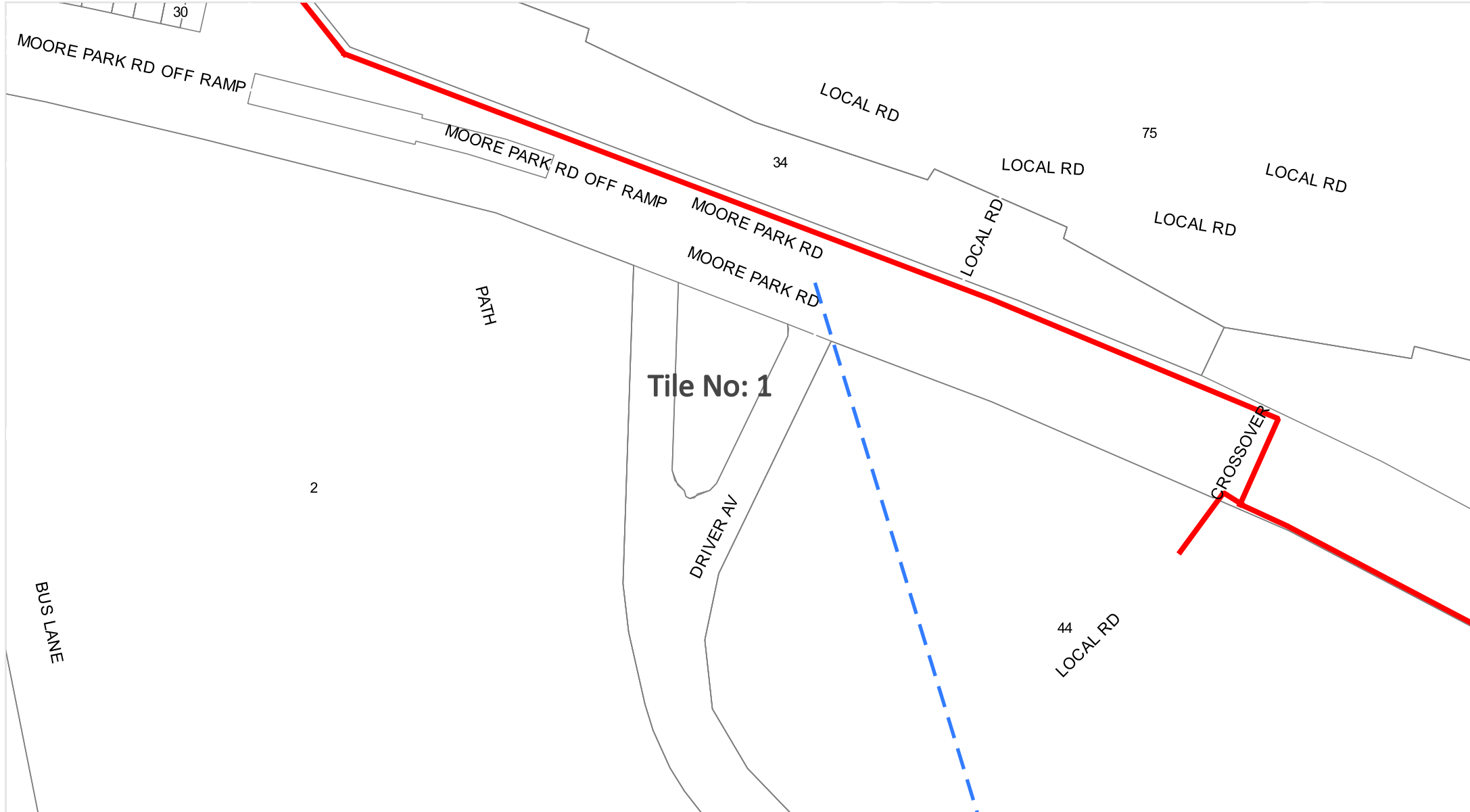


Legend | Scale: 1:9225



DISCLAIMER: While reasonable measures have been taken to ensure the accuracy of the information contained in this plan response, neither AARNet or PelicanCorp shall have any liability whatsoever in relation to any loss, damage, cost or expense arising from the use of this plan response or the information contained in it or the completeness or accuracy of such information. Use of such information is subject to and constitutes acceptance of these terms.

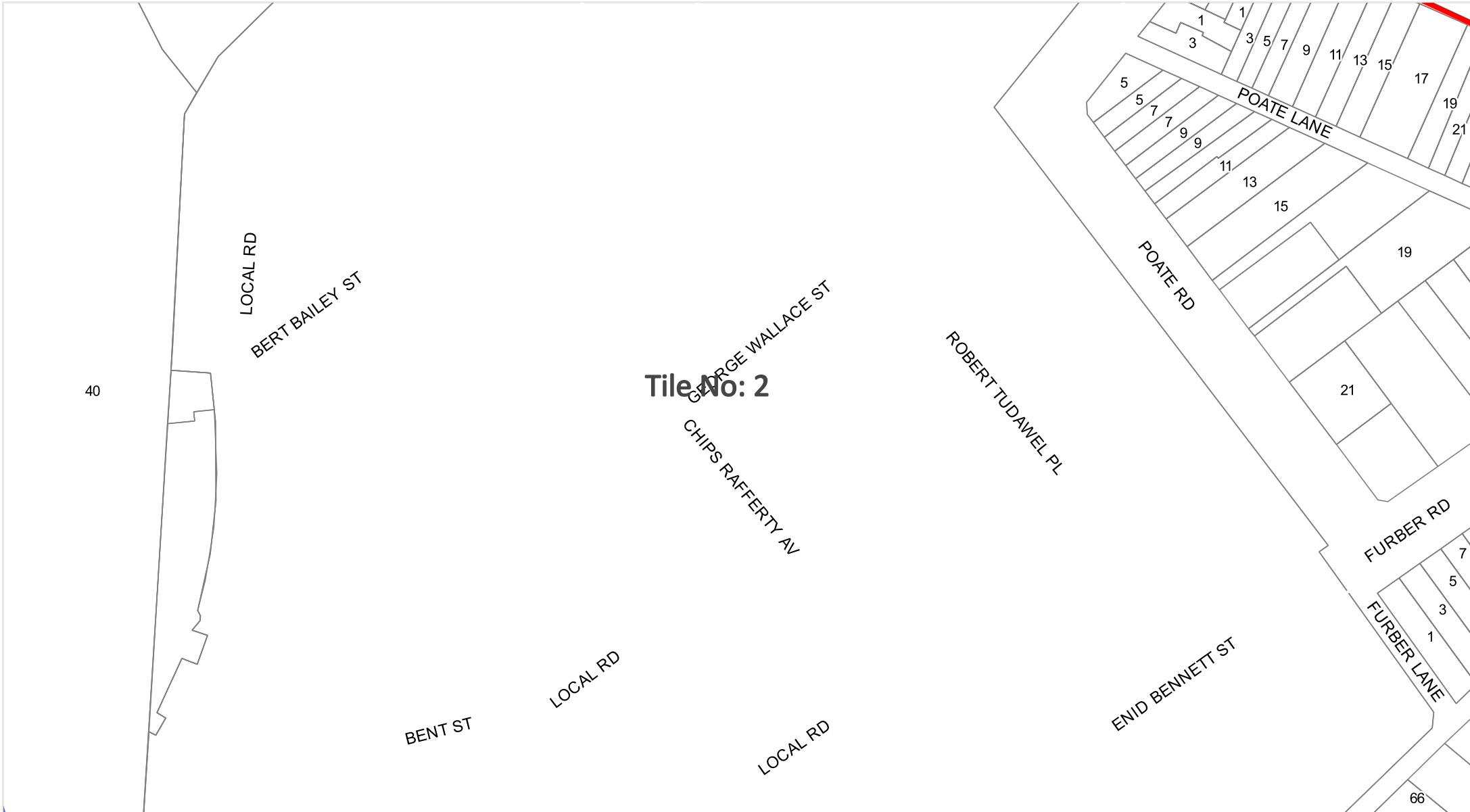


Legend | Scale: 1:1500



- Enquiry Area
- AARNet Fibre Optic Assets
- AARNet Power Assets
- Cadastre

DISCLAIMER: While reasonable measures have been taken to ensure the accuracy of the information contained in this plan response, neither AARNet or PelicanCorp shall have any liability whatsoever in relation to any loss, damage, cost or expense arising from the use of this plan response or the information contained in it or the completeness or accuracy of such information. Use of such information is subject to and constitutes acceptance of these terms.

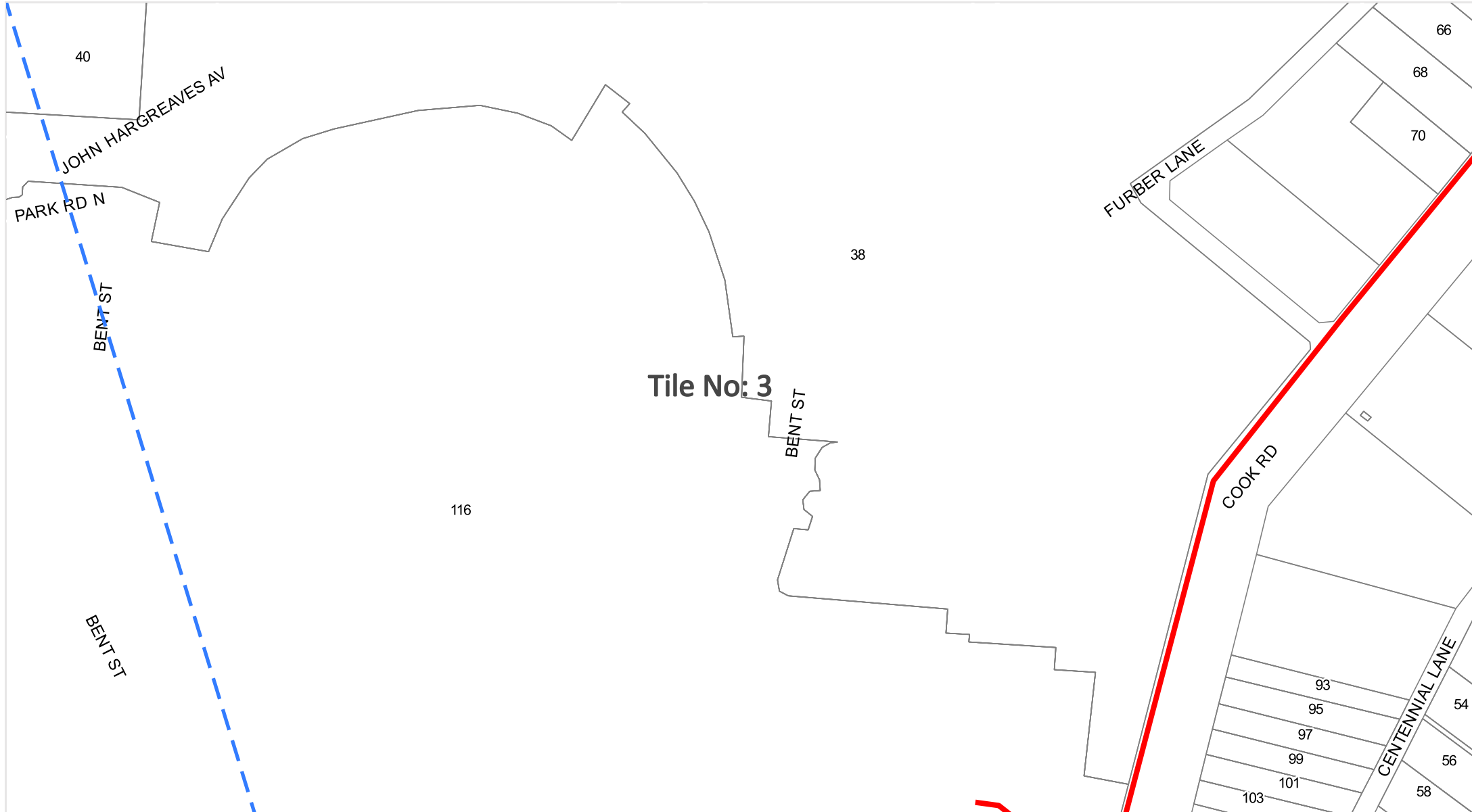


Legend | Scale: 1:1500



- Enquiry Area
- AARNet Fibre Optic Assets
- AARNet Power Assets
- Cadastre

DISCLAIMER: While reasonable measures have been taken to ensure the accuracy of the information contained in this plan response, neither AARNet or PelicanCorp shall have any liability whatsoever in relation to any loss, damage, cost or expense arising from the use of this plan response or the information contained in it or the completeness or accuracy of such information. Use of such information is subject to and constitutes acceptance of these terms.

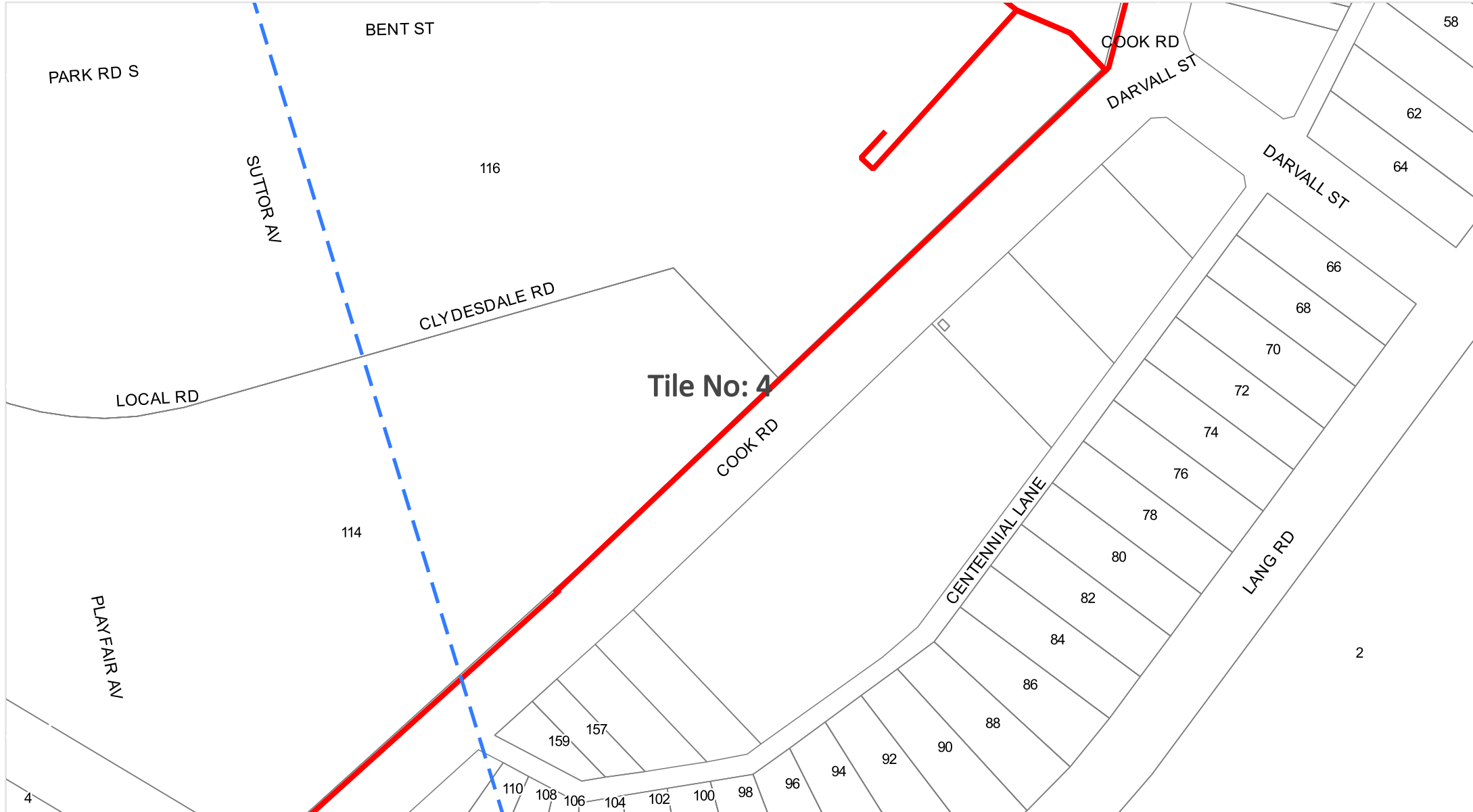


Legend | Scale: 1:1500



- Enquiry Area
- AARNet Fibre Optic Assets
- AARNet Power Assets
- Cadastral

DISCLAIMER: While reasonable measures have been taken to ensure the accuracy of the information contained in this plan response, neither AARNet or PelicanCorp shall have any liability whatsoever in relation to any loss, damage, cost or expense arising from the use of this plan response or the information contained in it or the completeness or accuracy of such information. Use of such information is subject to and constitutes acceptance of these terms.

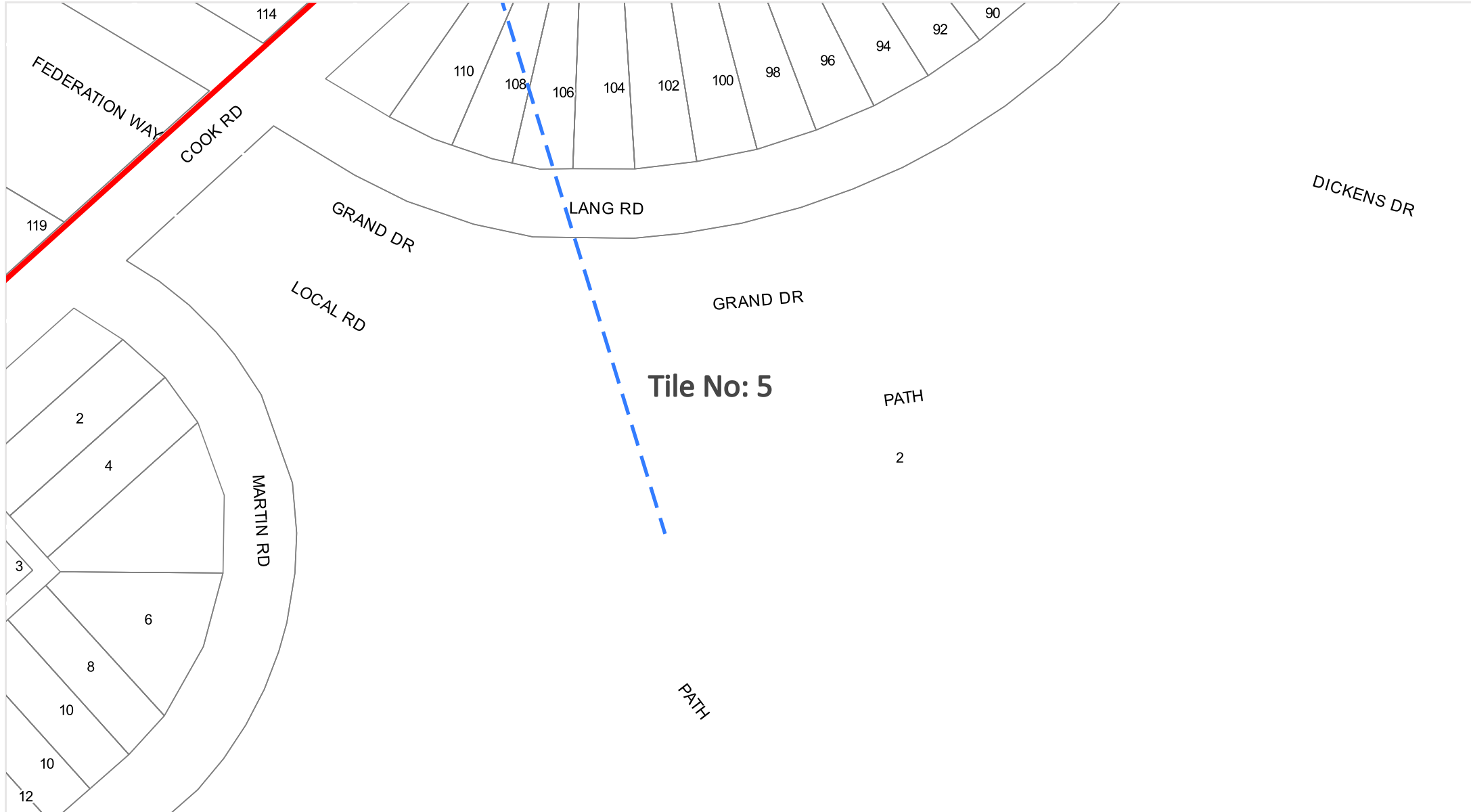


Legend | Scale: 1:1500



- Enquiry Area
- AARNet Fibre Optic Assets
- AARNet Power Assets
- Cadastre

DISCLAIMER: While reasonable measures have been taken to ensure the accuracy of the information contained in this plan response, neither AARNet or PelicanCorp shall have any liability whatsoever in relation to any loss, damage, cost or expense arising from the use of this plan response or the information contained in it or the completeness or accuracy of such information. Use of such information is subject to and constitutes acceptance of these terms.



Legend | Scale: 1:1500



- Enquiry Area
- AARNET Fibre Optic Assets
- AARNET Power Assets
- Cadastre

DISCLAIMER: While reasonable measures have been taken to ensure the accuracy of the information contained in this plan response, neither AARNET or PelicanCorp shall have any liability whatsoever in relation to any loss, damage, cost or expense arising from the use of this plan response or the information contained in it or the completeness or accuracy of such information. Use of such information is subject to and constitutes acceptance of these terms.