




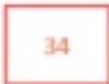




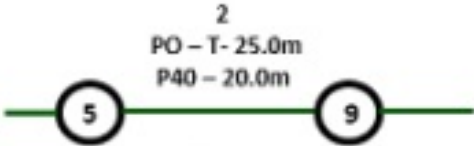
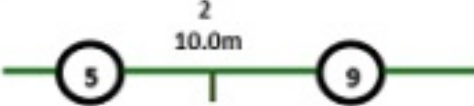





## Indicative Plans

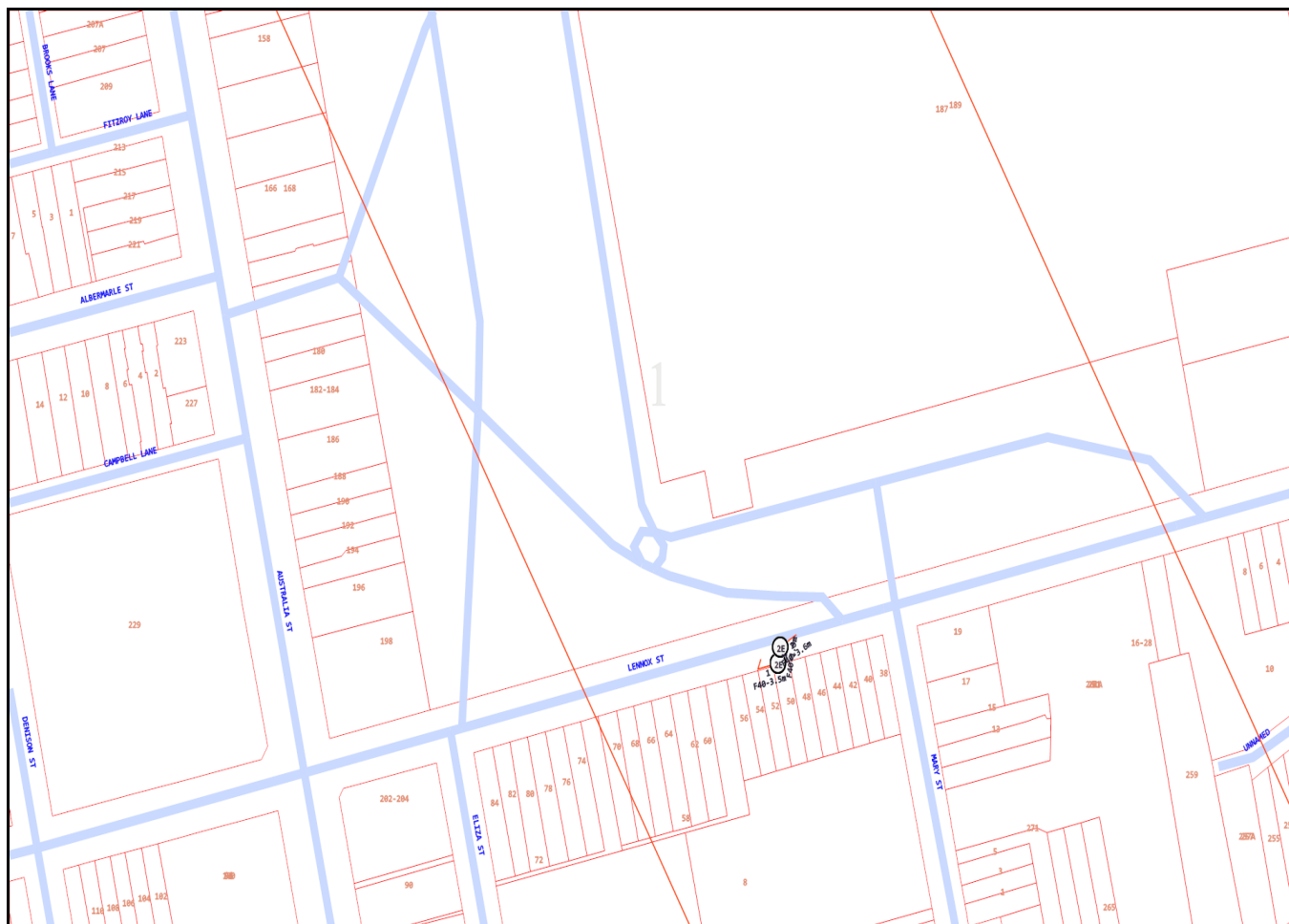
Issue Date:	18/11/2019	 <b>DIAL BEFORE YOU DIG</b> <a href="http://www.1100.com.au">www.1100.com.au</a>
Location:	398 Sydney Park Road , Alexandria , NSW , 2015	

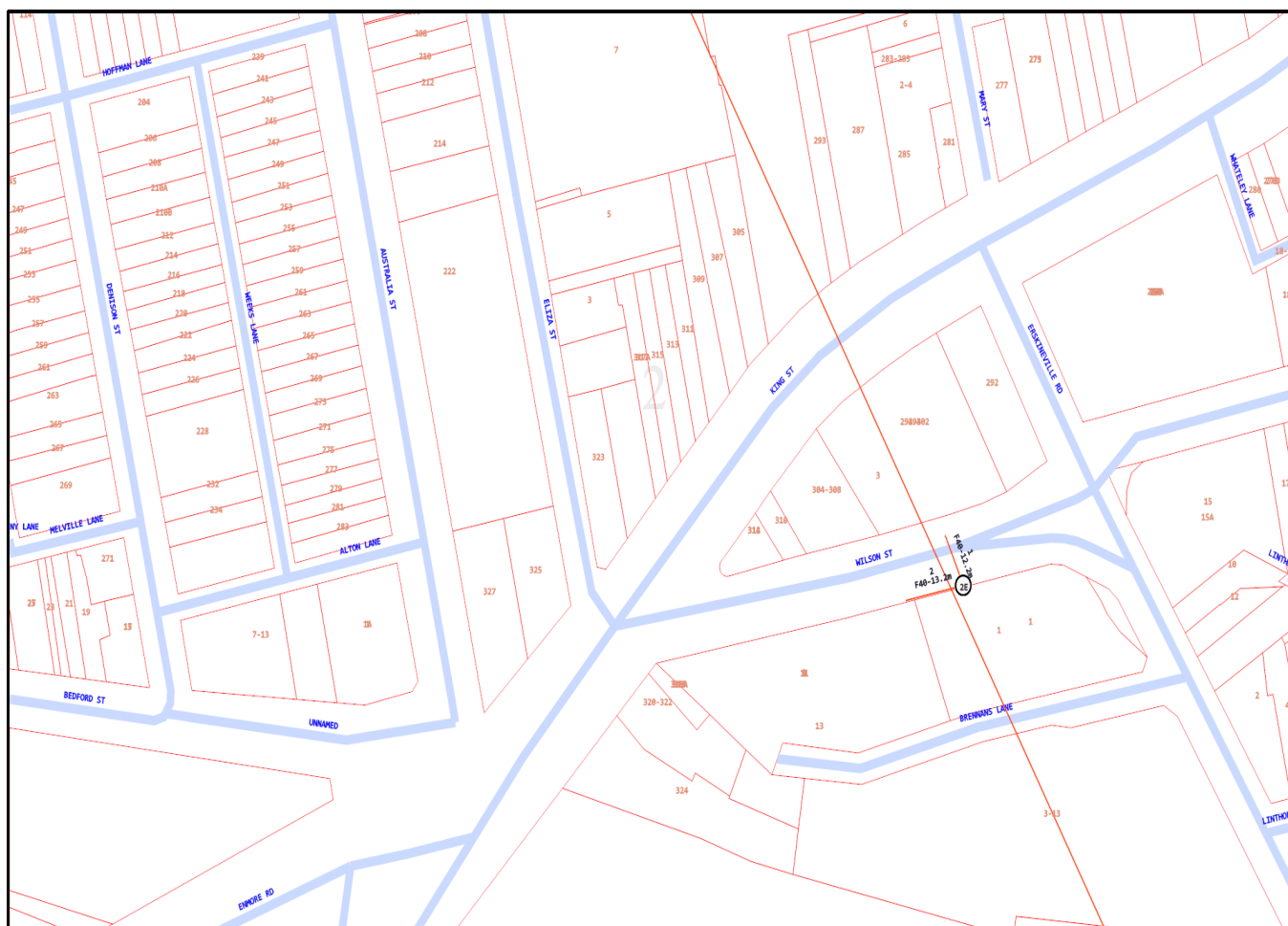
2	12	22	32	42	52
3	13	23	33	43	53
4	14	24	34	44	54
5	15	25	35	45	55
6	16	26	36	46	56
7	17	27	37	47	57
8	18	28	38	48	58
9	19	29	39	49	59
10	20	30	40	50	60

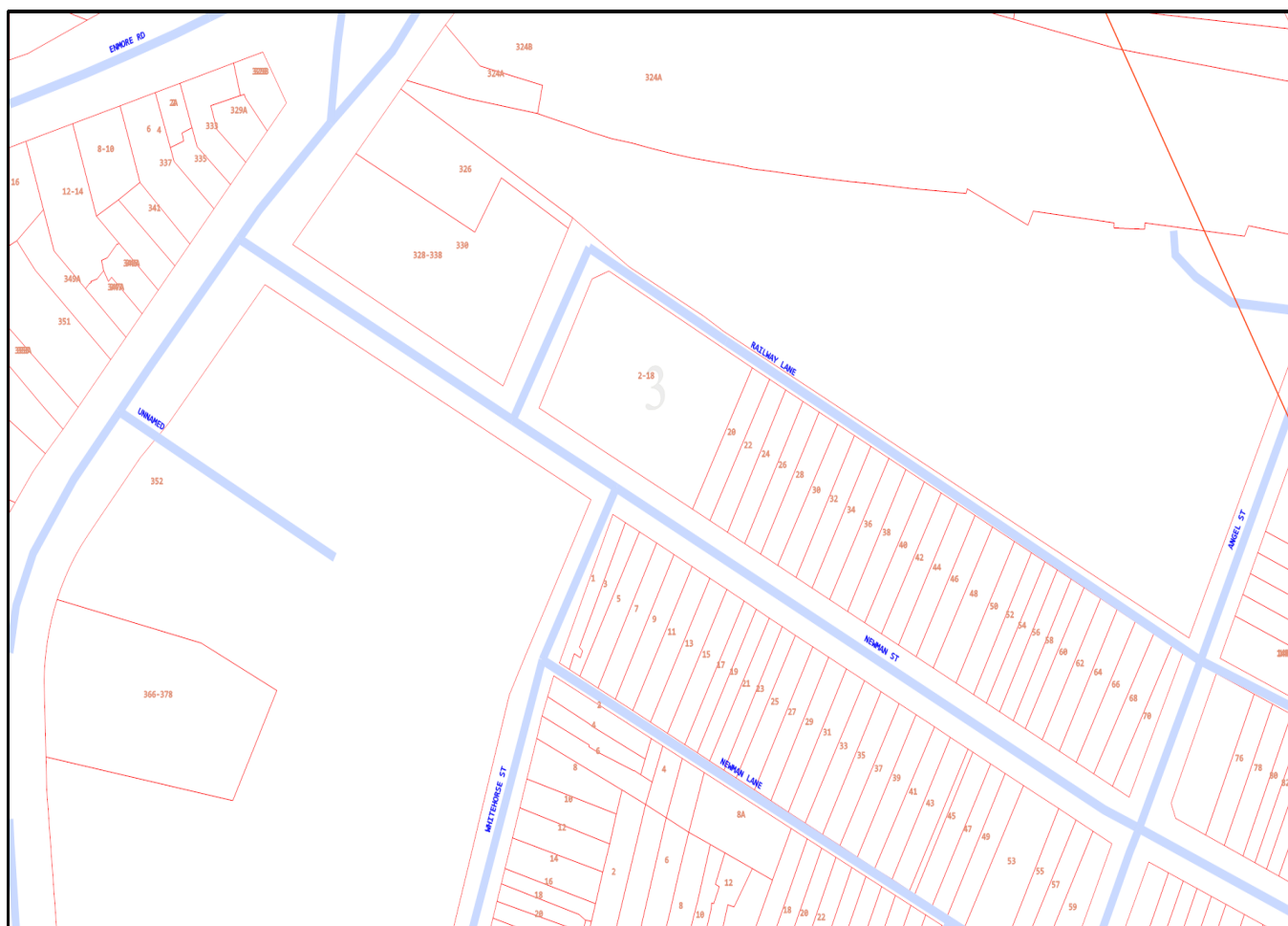


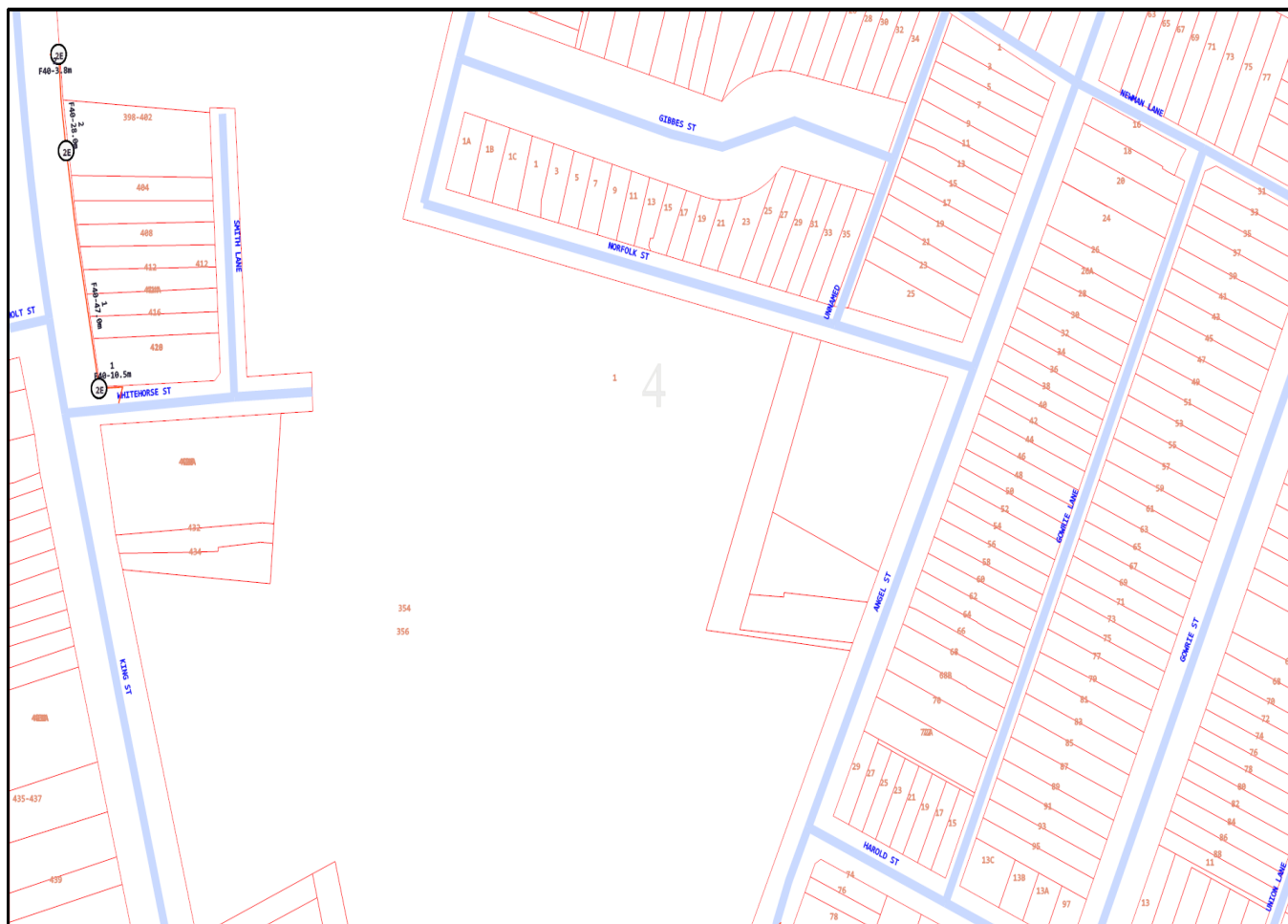
## LEGEND

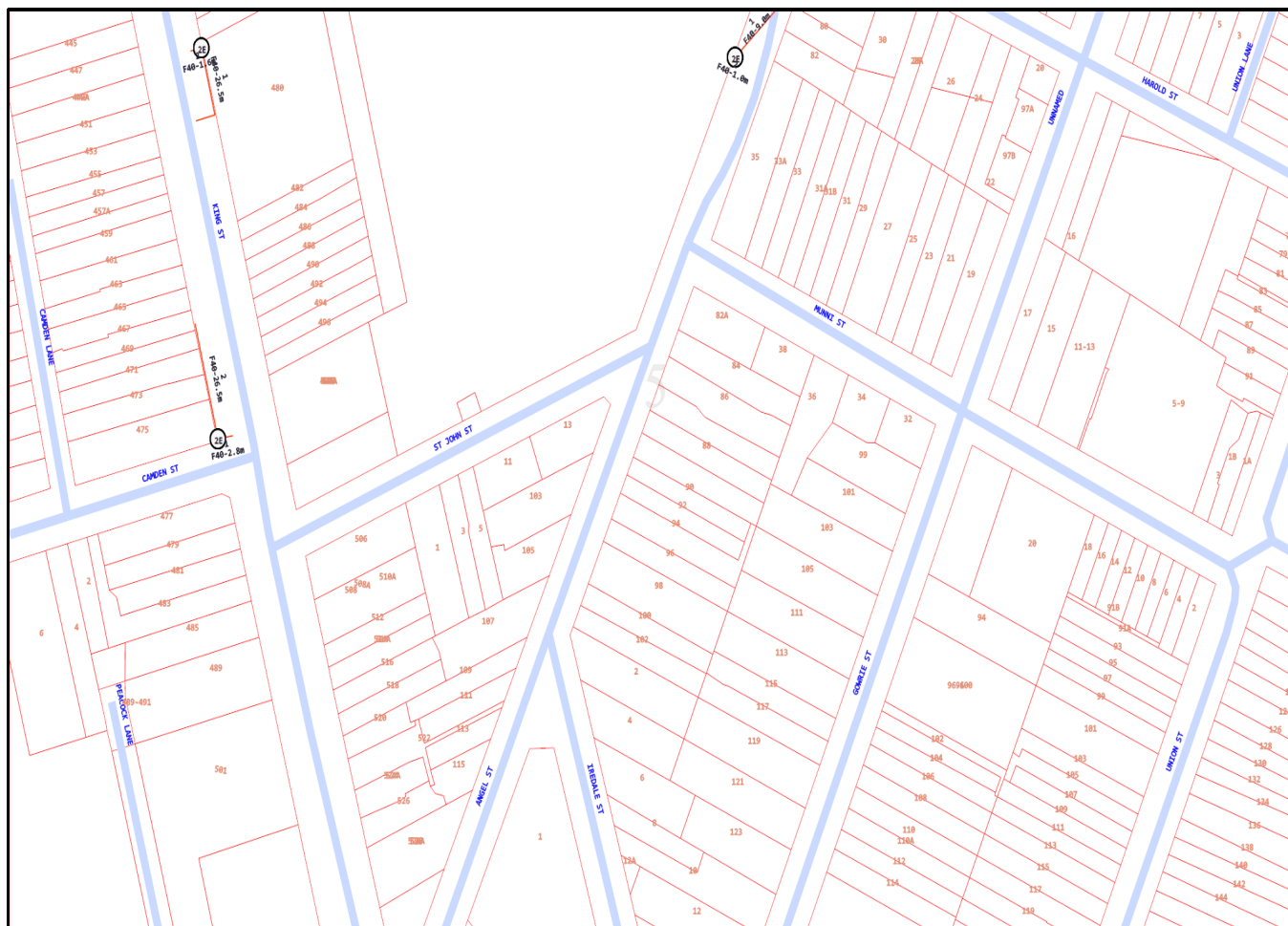
	Parcel and the location
	Pit with size "5"
	Power Pit with size "2E". Valid PIT Size: e.g. 2E, 5E, 6E, 8E, 9E, E, null.
	Manhole
	Pillar
	Cable count of trench is 2. One "Other size" PVC conduit (PO) owned by Telstra (-T-), between pits of sizes, "5" and "9" are 25.0m apart. One 40mm PVC conduit (P40) owned by NBN, between pits of sizes, "5" and "9" are 20.0m apart.
	2 Direct buried cables between pits of sizes, "5" and "9" are 10.0m apart.
	Trench containing any <b>INSERVICE/CONSTRUCTED</b> (Copper/RF/Fibre) cables.
	Trench containing only <b>DESIGNED/PLANNED</b> (Copper/RF/Fibre/Power) cables.
	Trench containing any <b>INSERVICE/CONSTRUCTED</b> (Power) cables.
	Road and the street name "Broadway ST"
Scale	0 20 40 60 Meters 1:2000 1 cm equals 20 m 



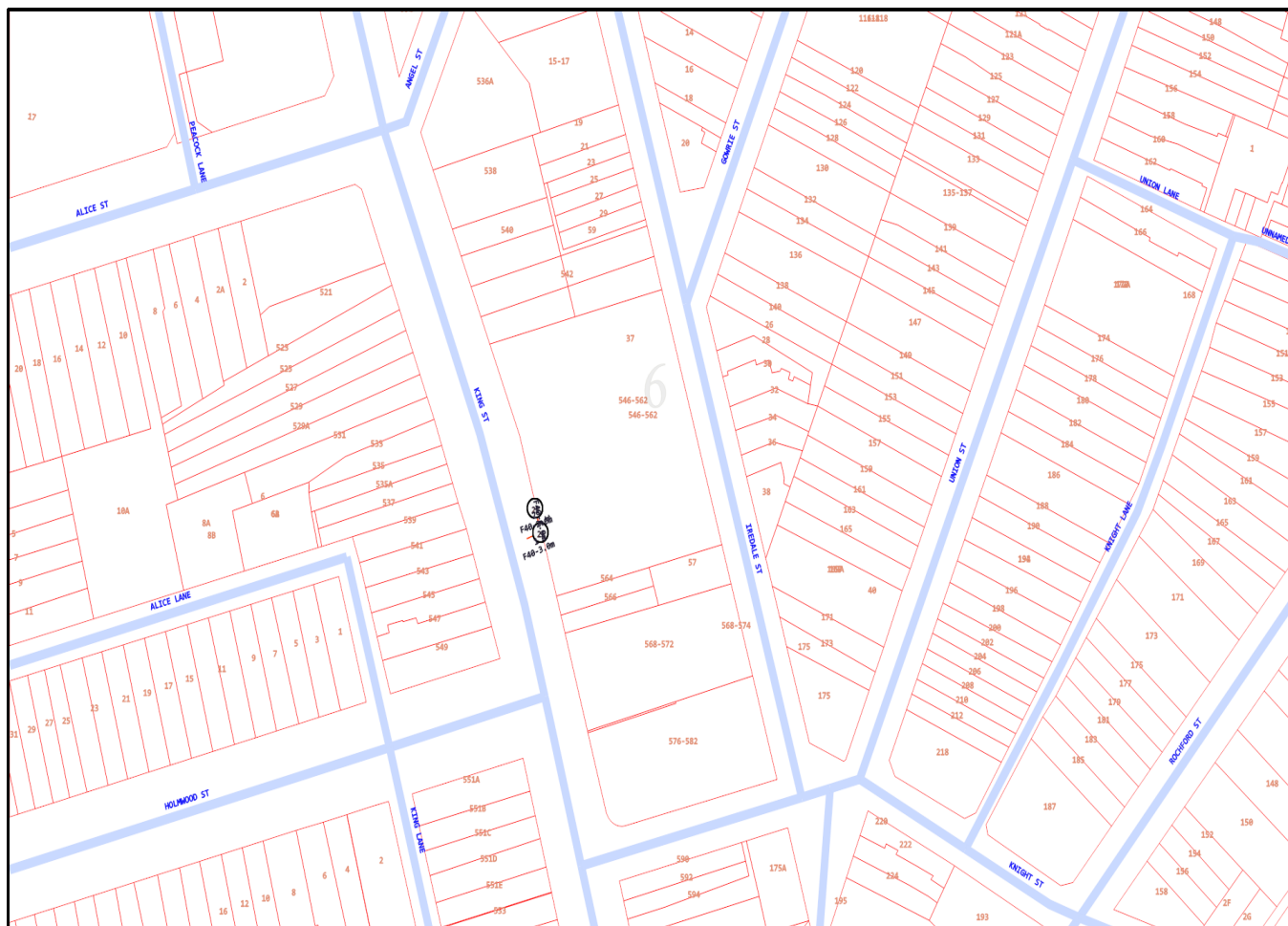




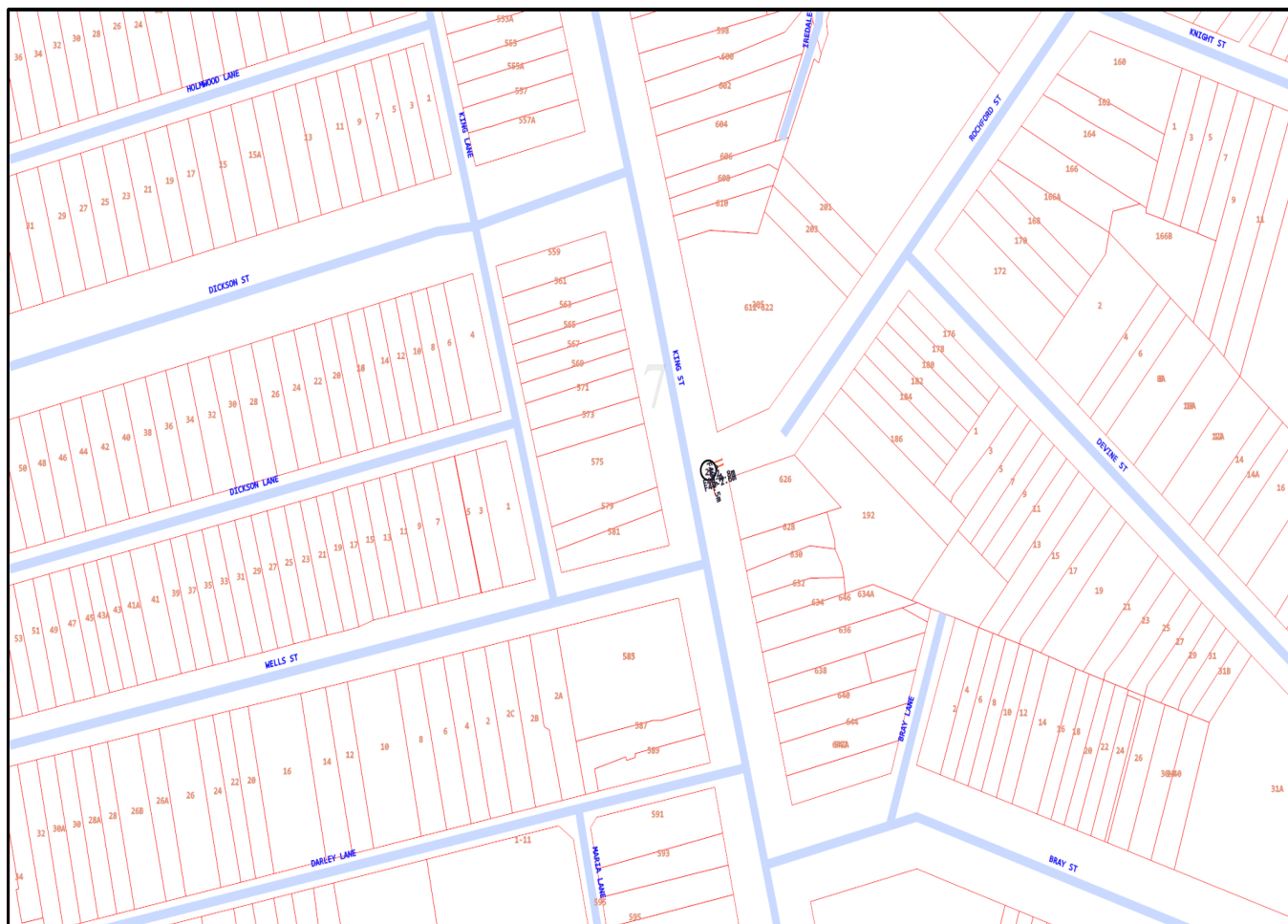




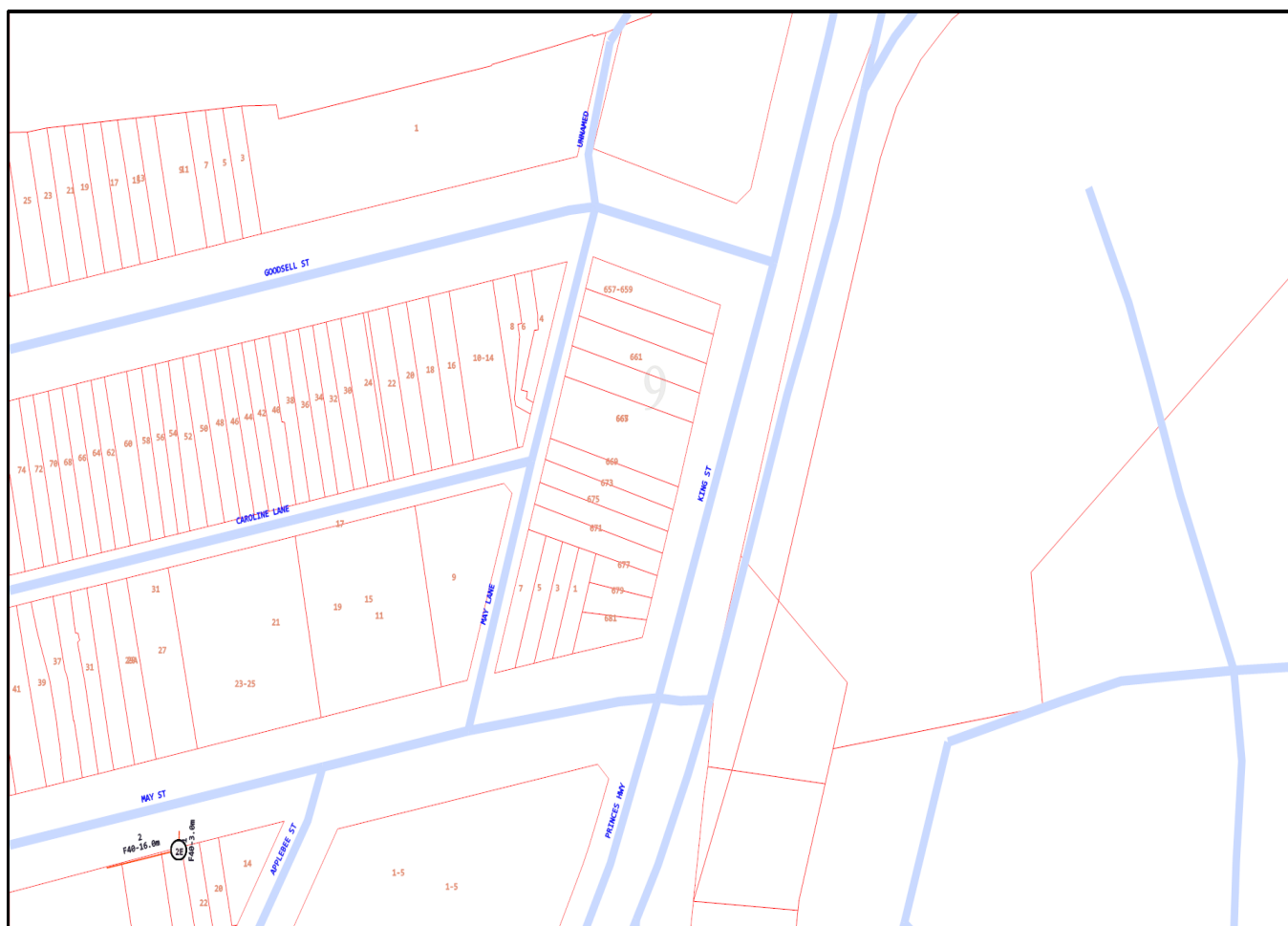


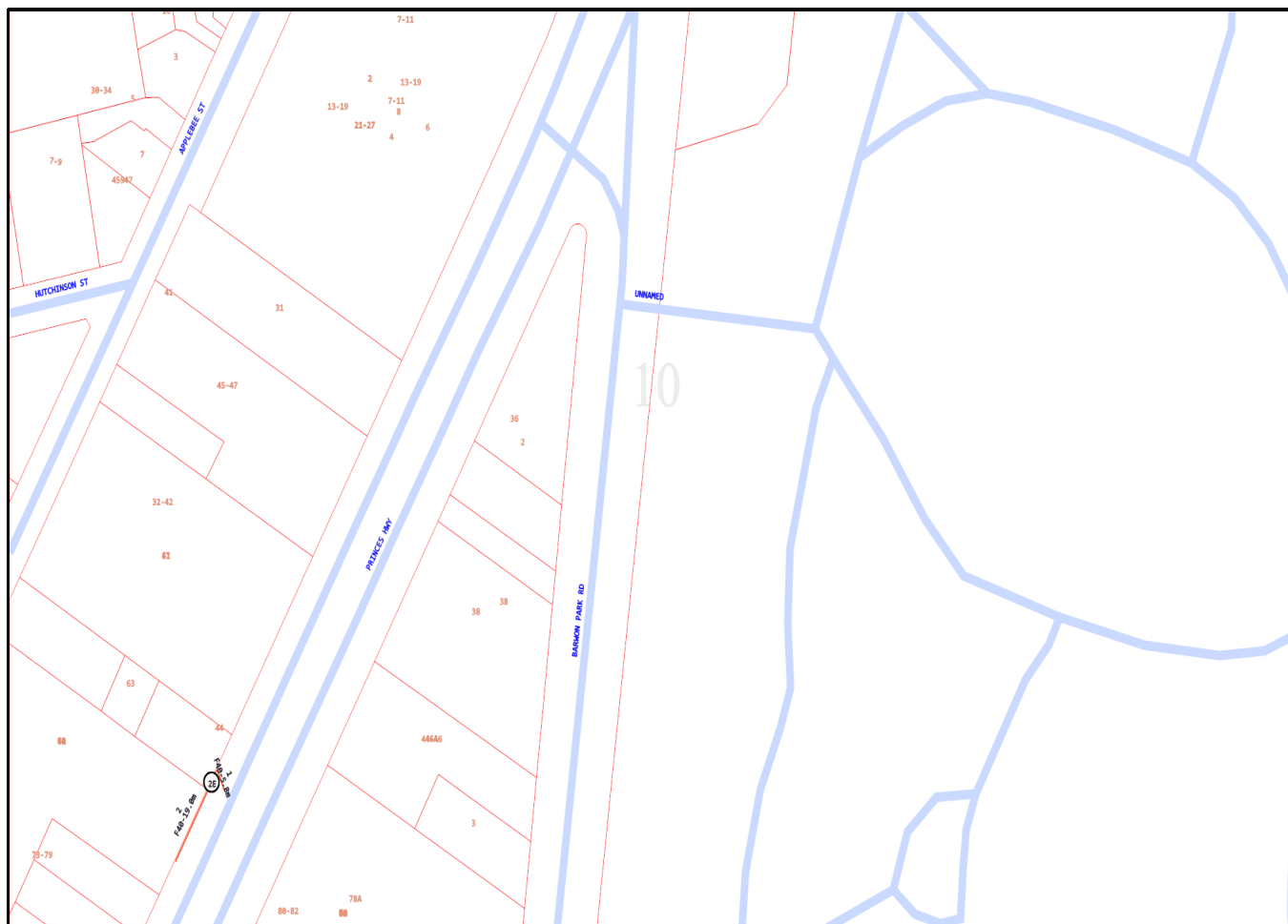


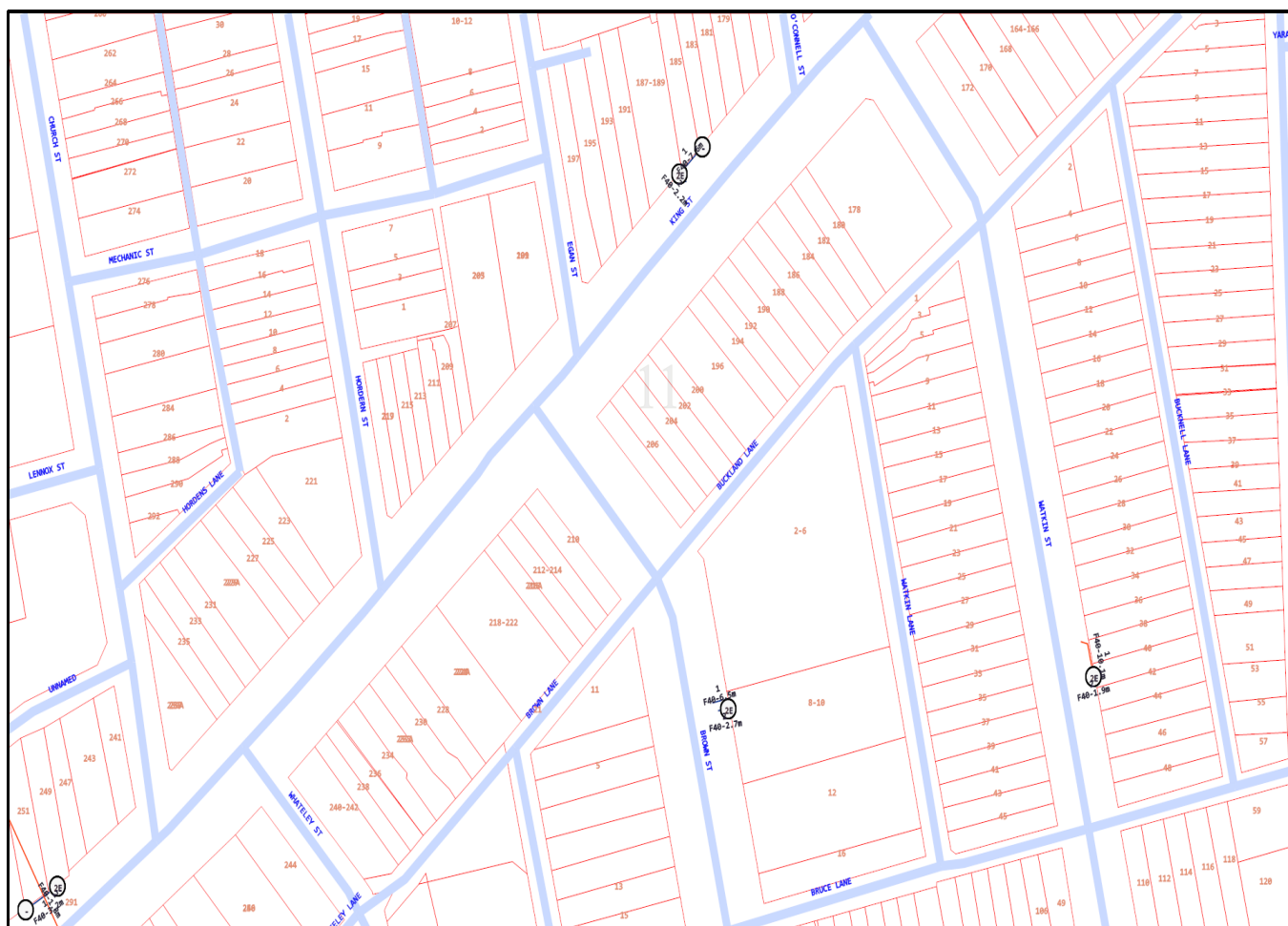




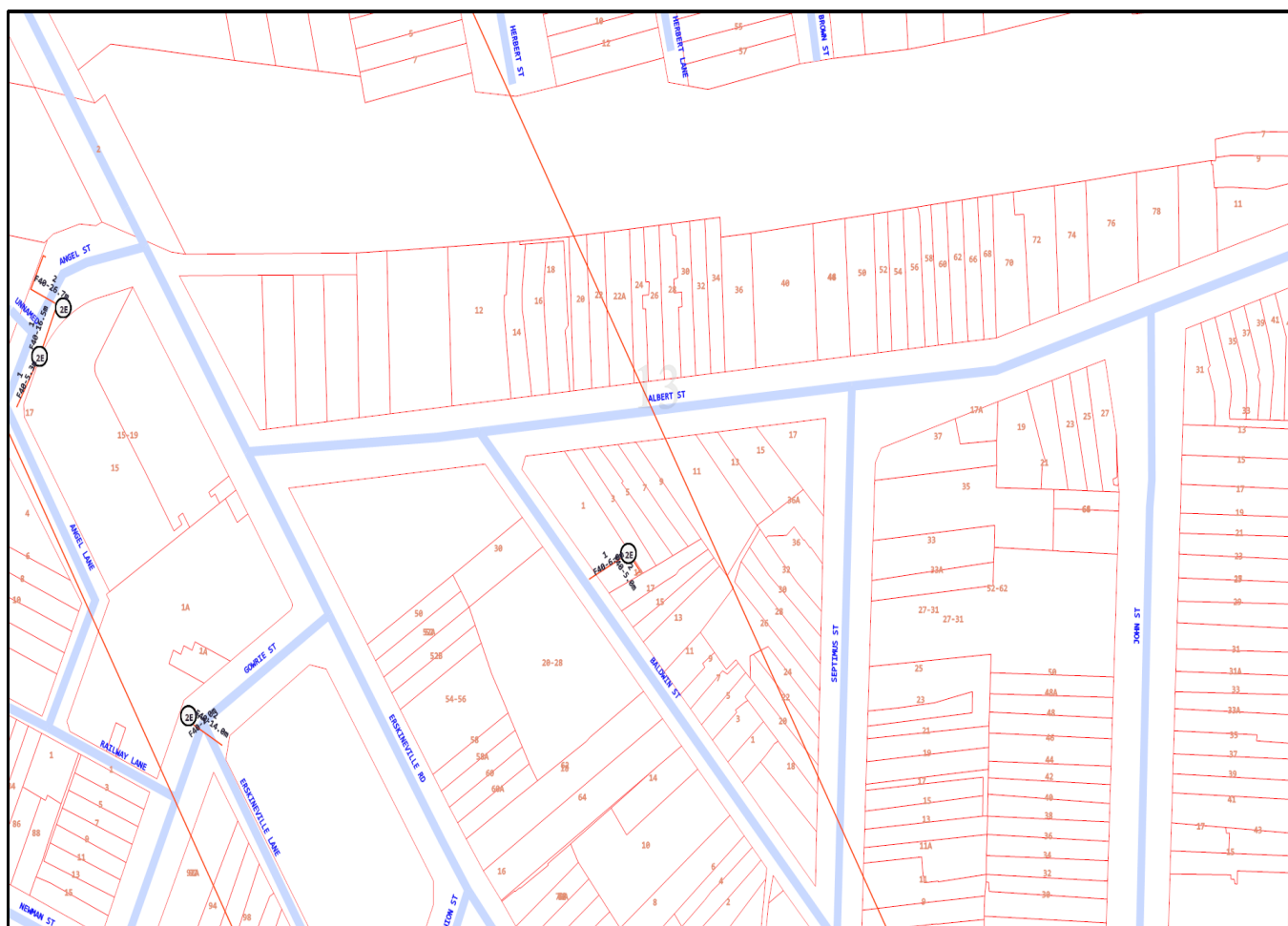




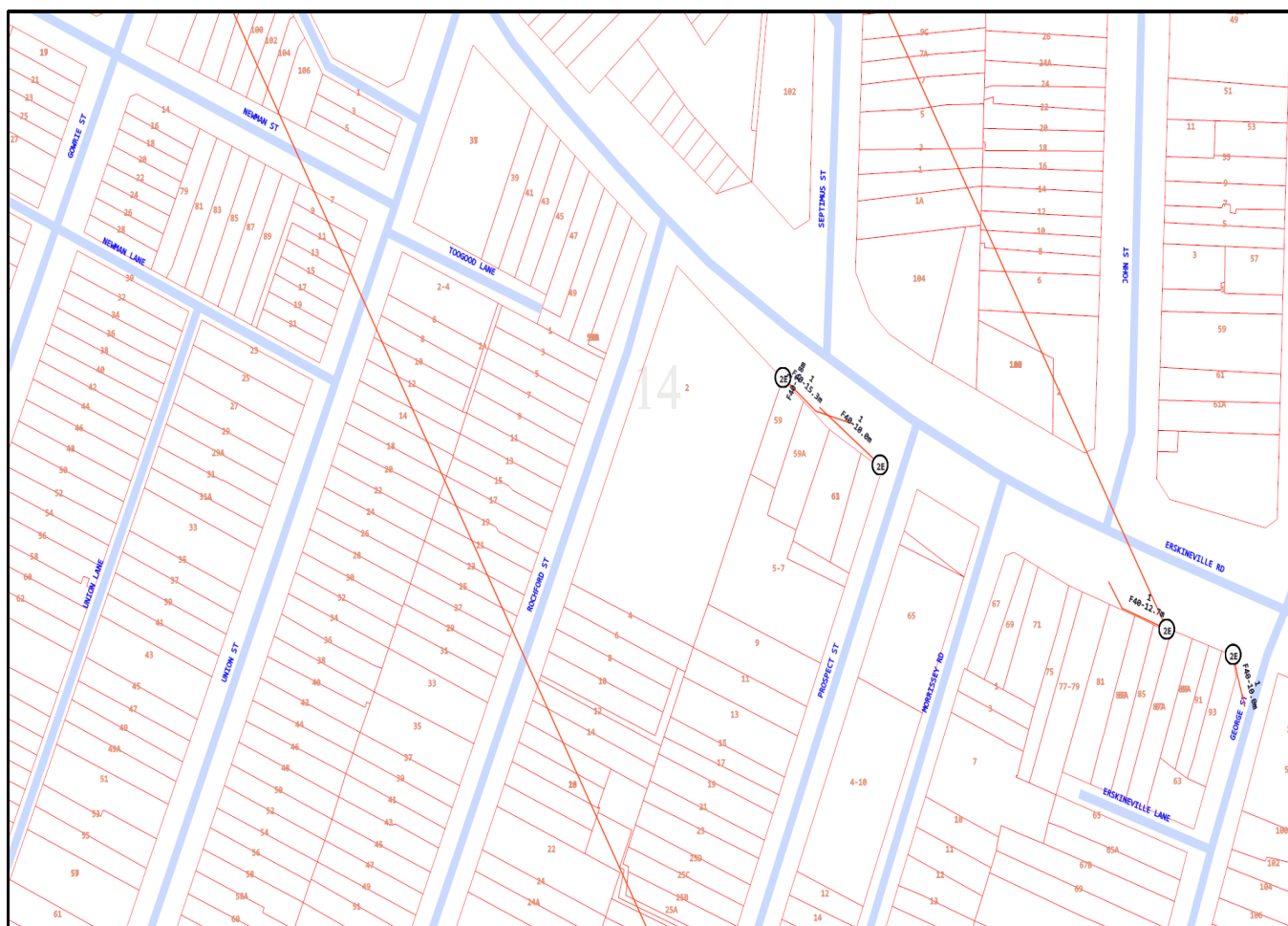


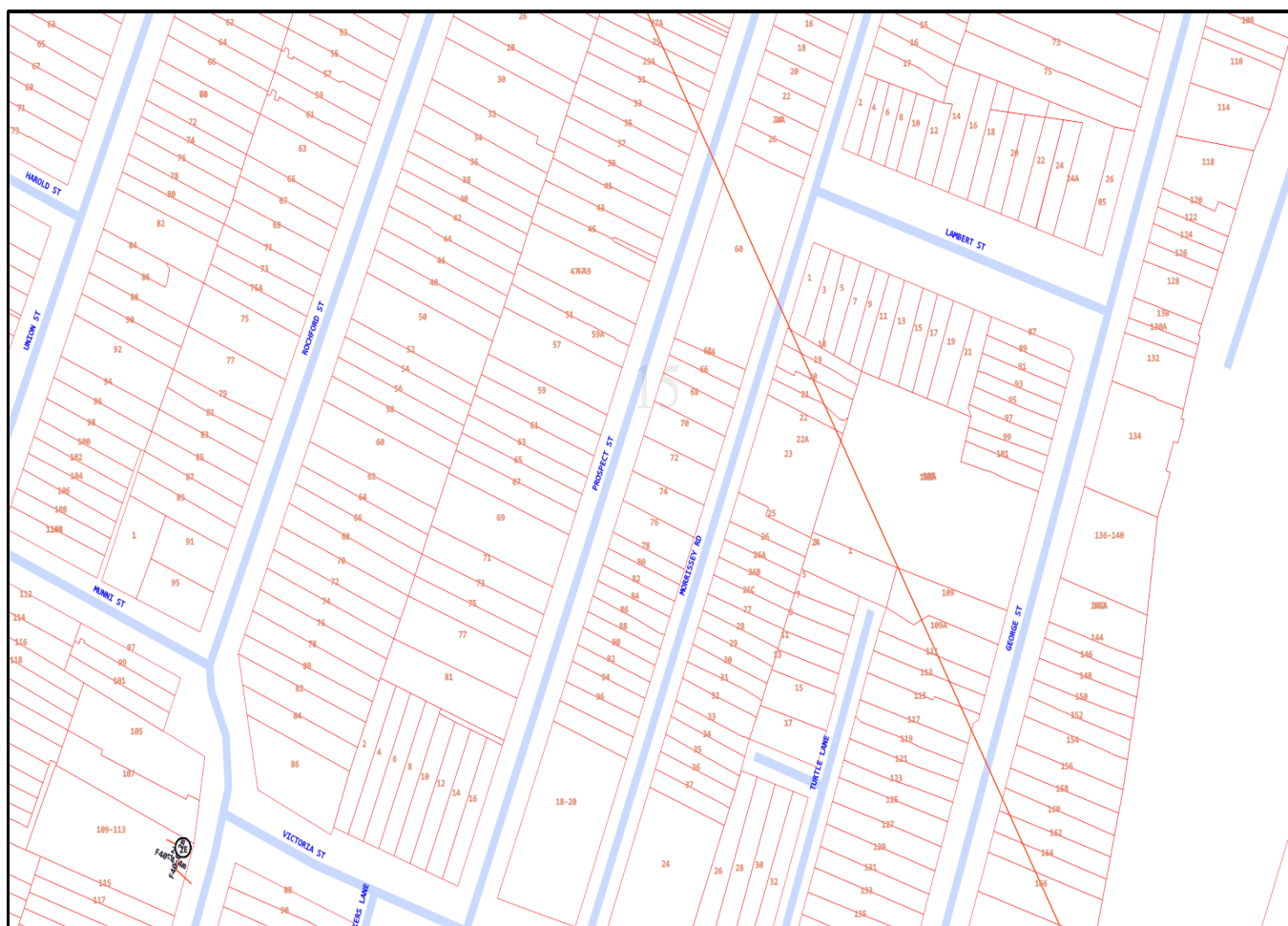






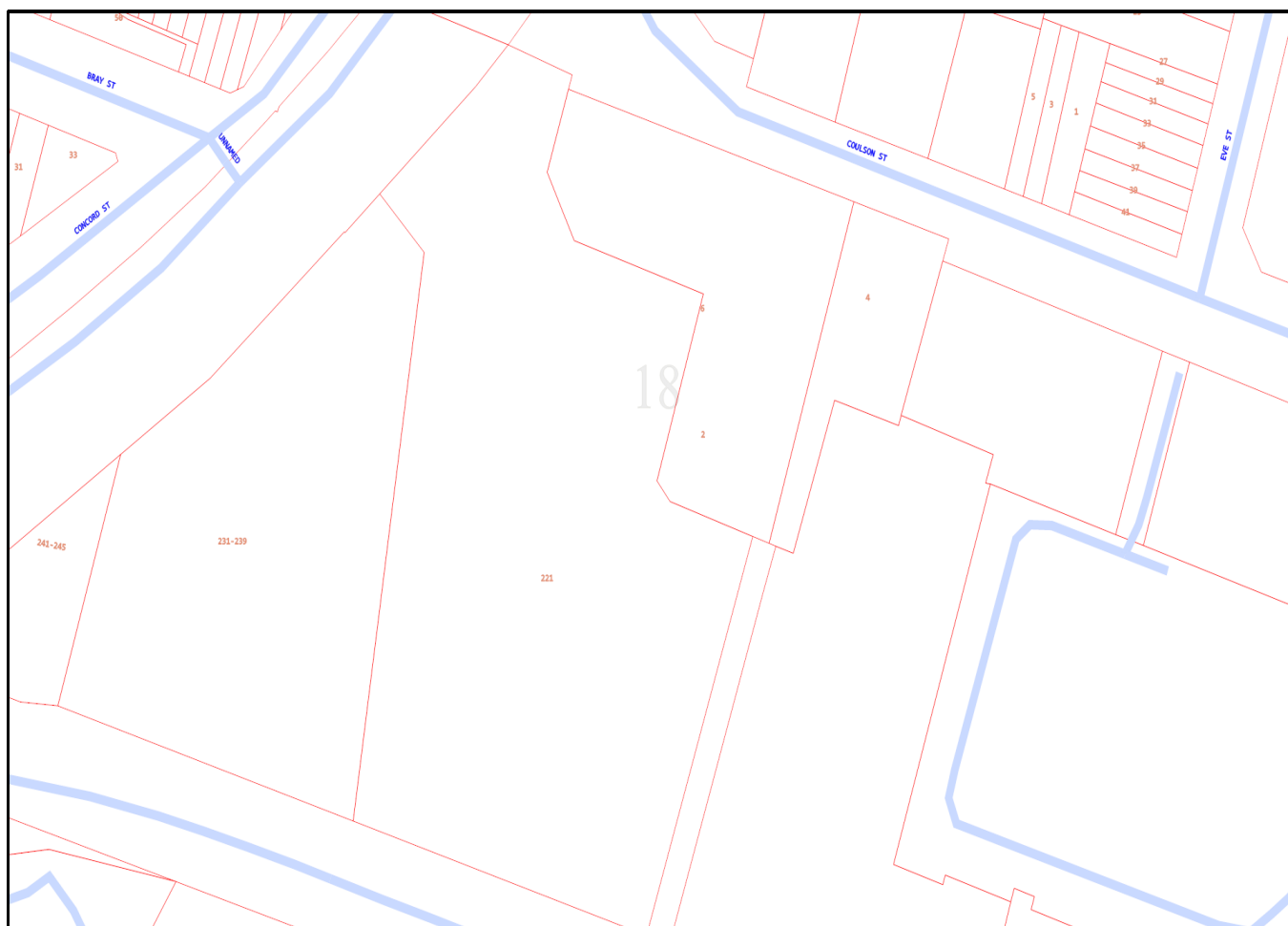


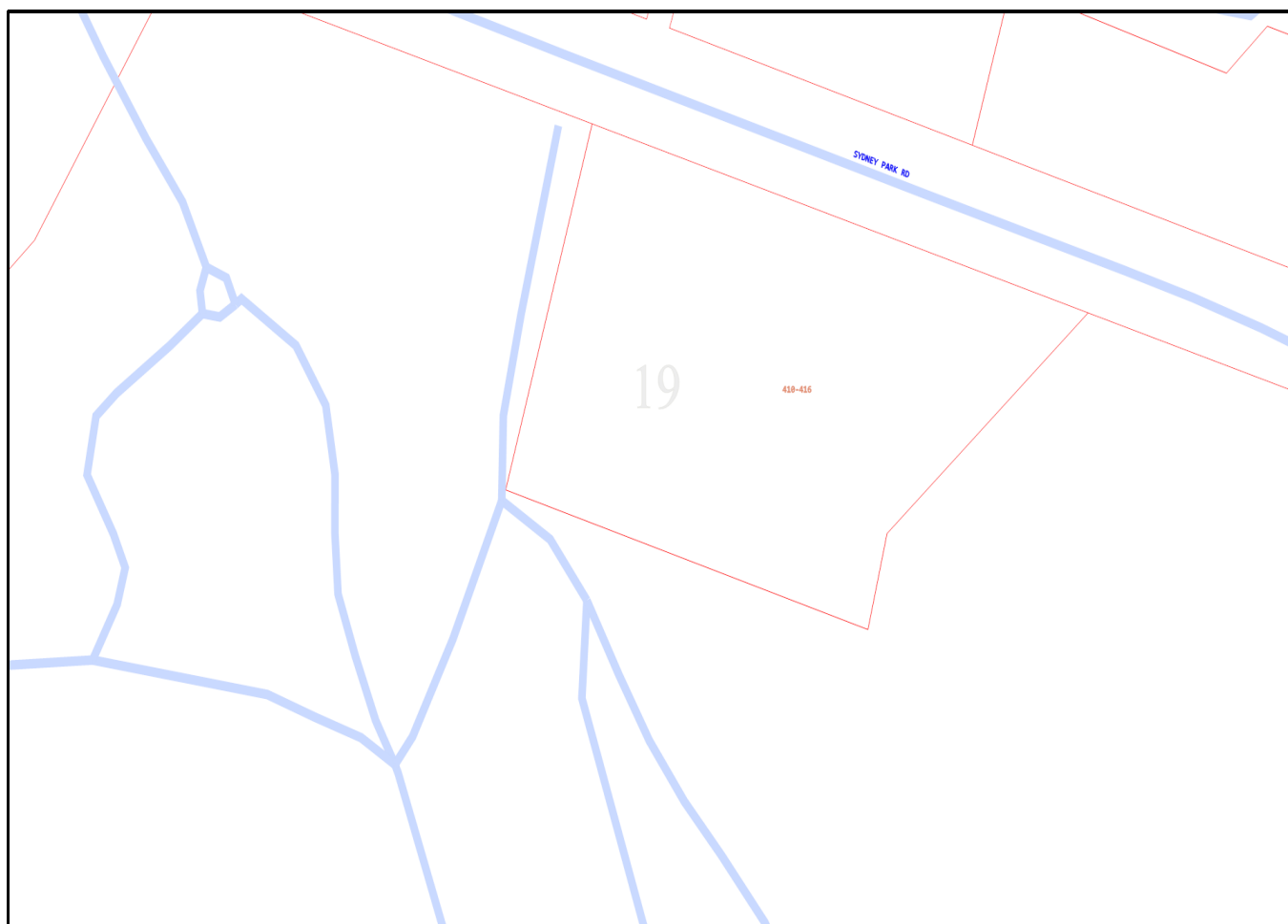


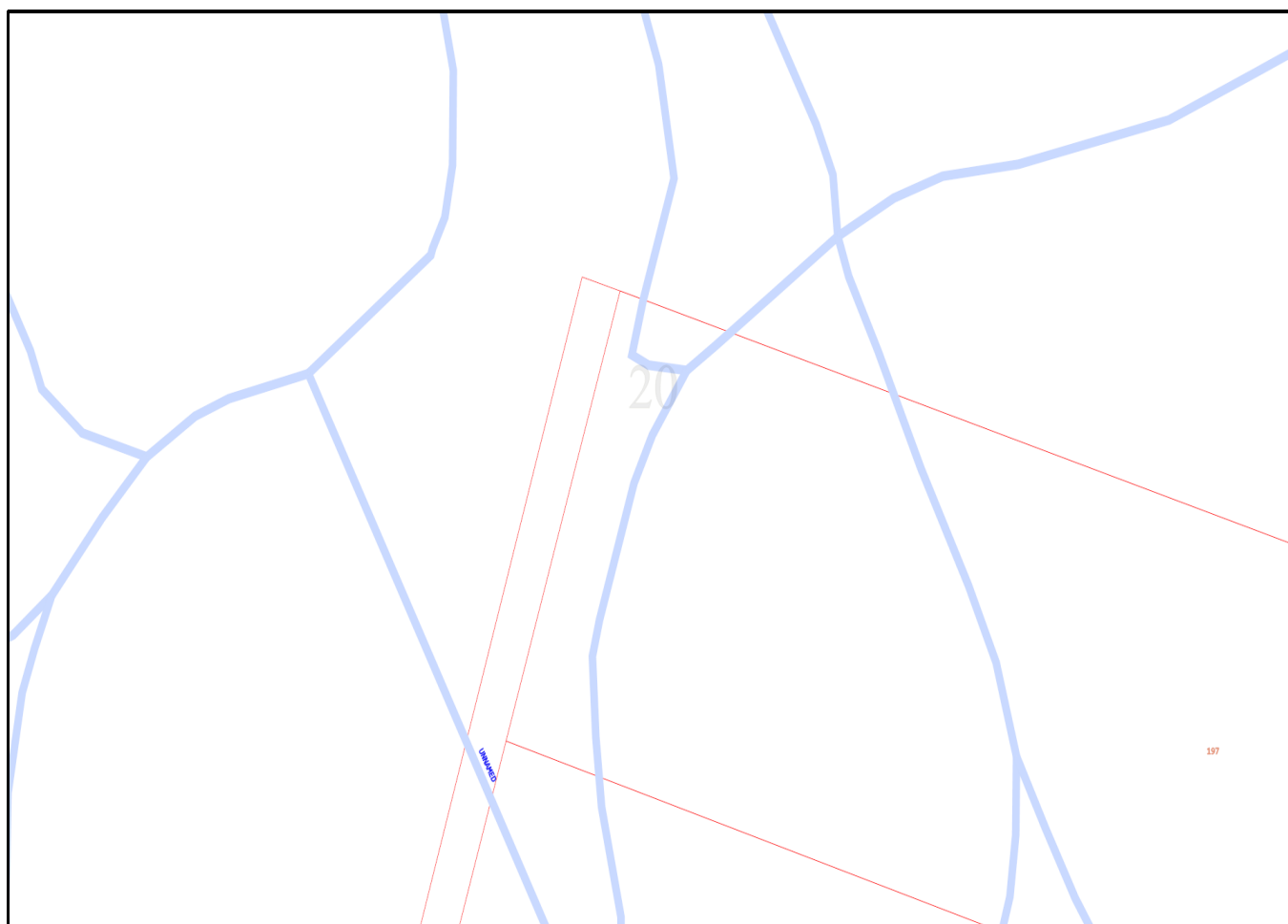




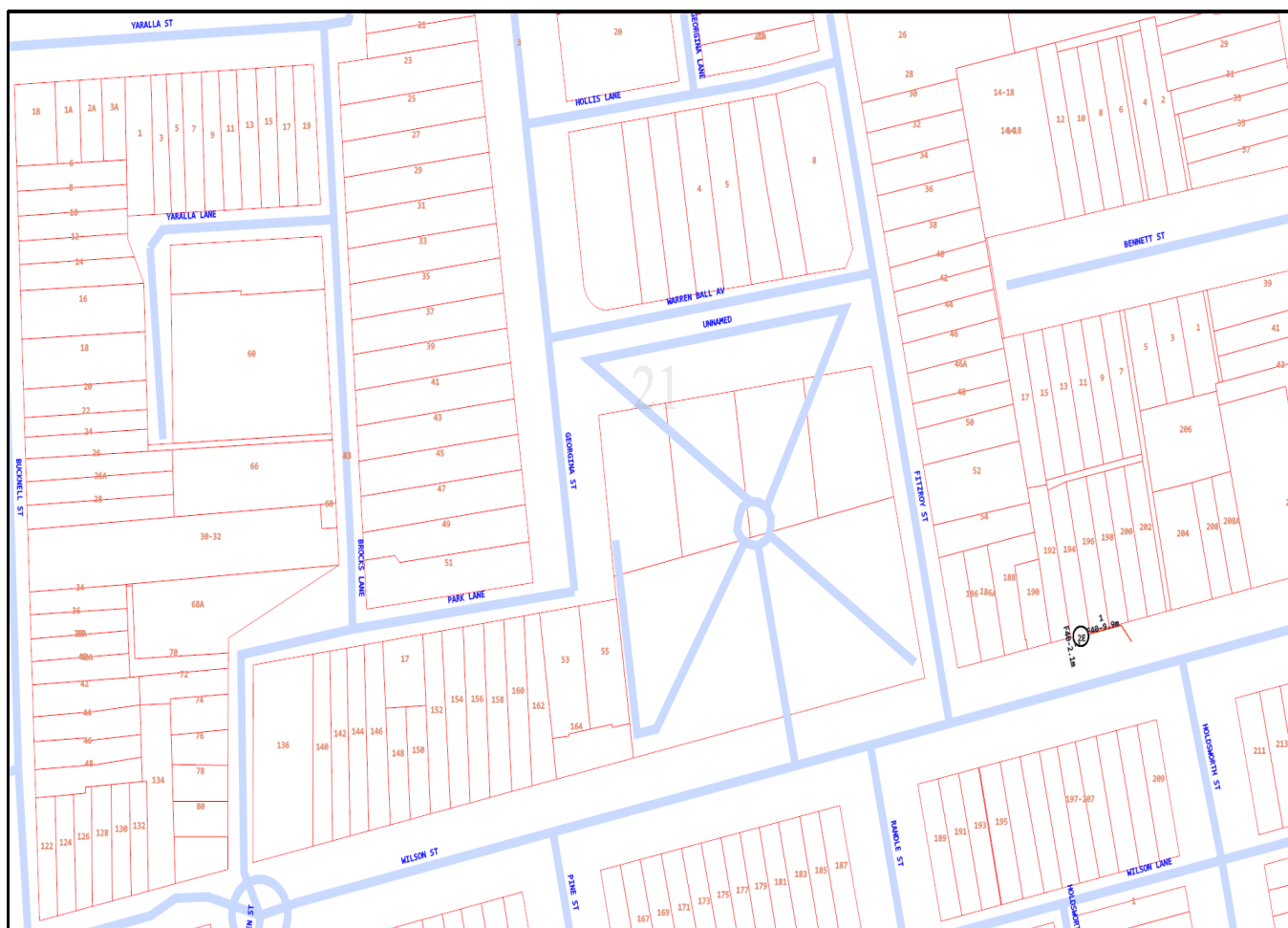












## Emergency Contacts

You must immediately report any damage to **nbn™** network that you are/become aware of. Notification may be by telephone - 1800 626 329.