




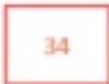




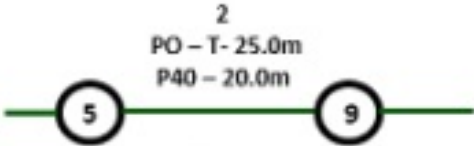
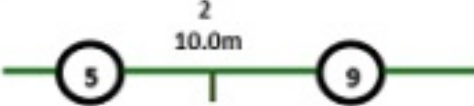





Indicative Plans

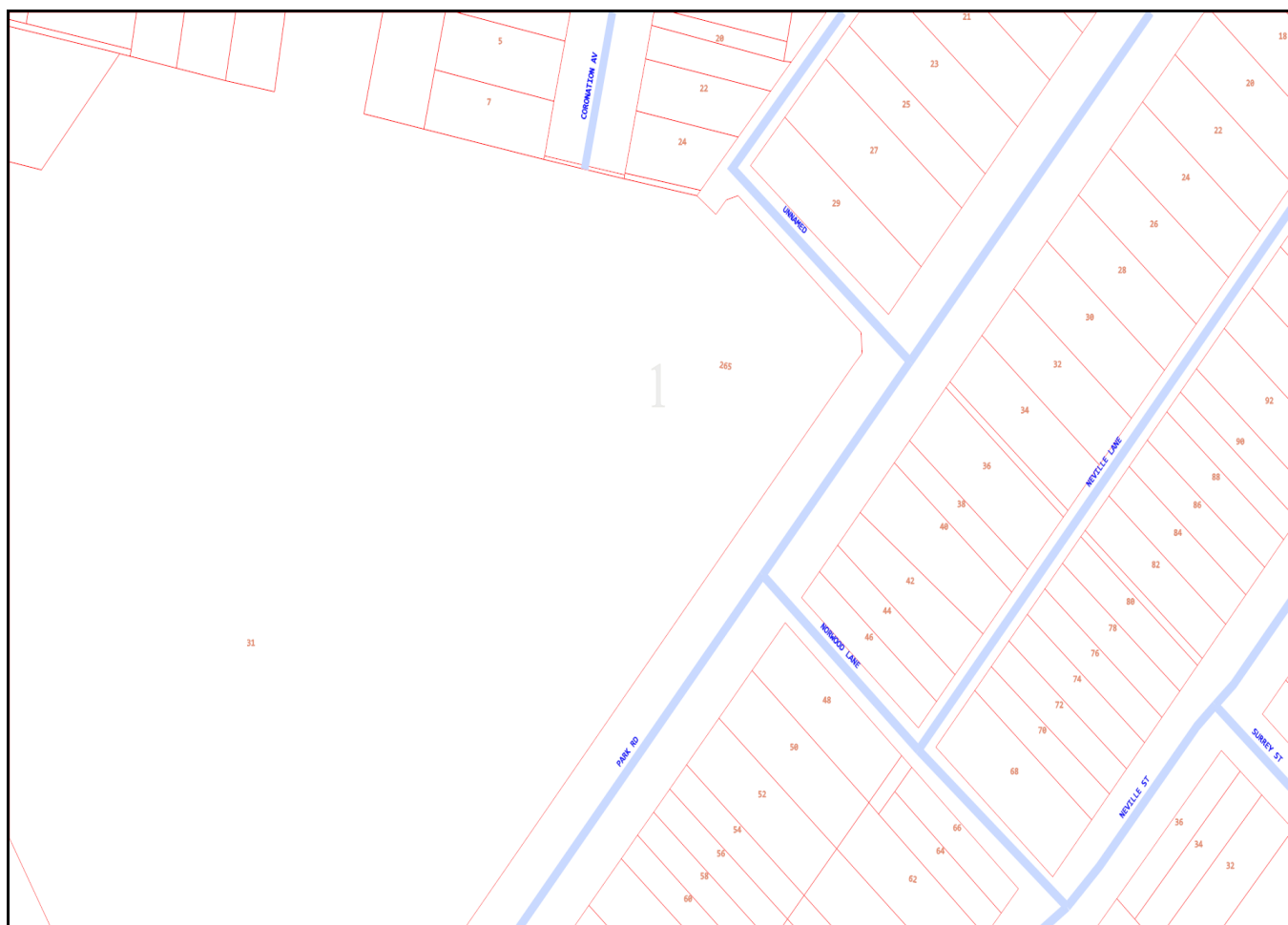
Issue Date:	18/11/2019	 DIAL BEFORE YOU DIG www.1100.com.au
Location:	Sydney Steel Road , Marrickville , NSW , 2204	

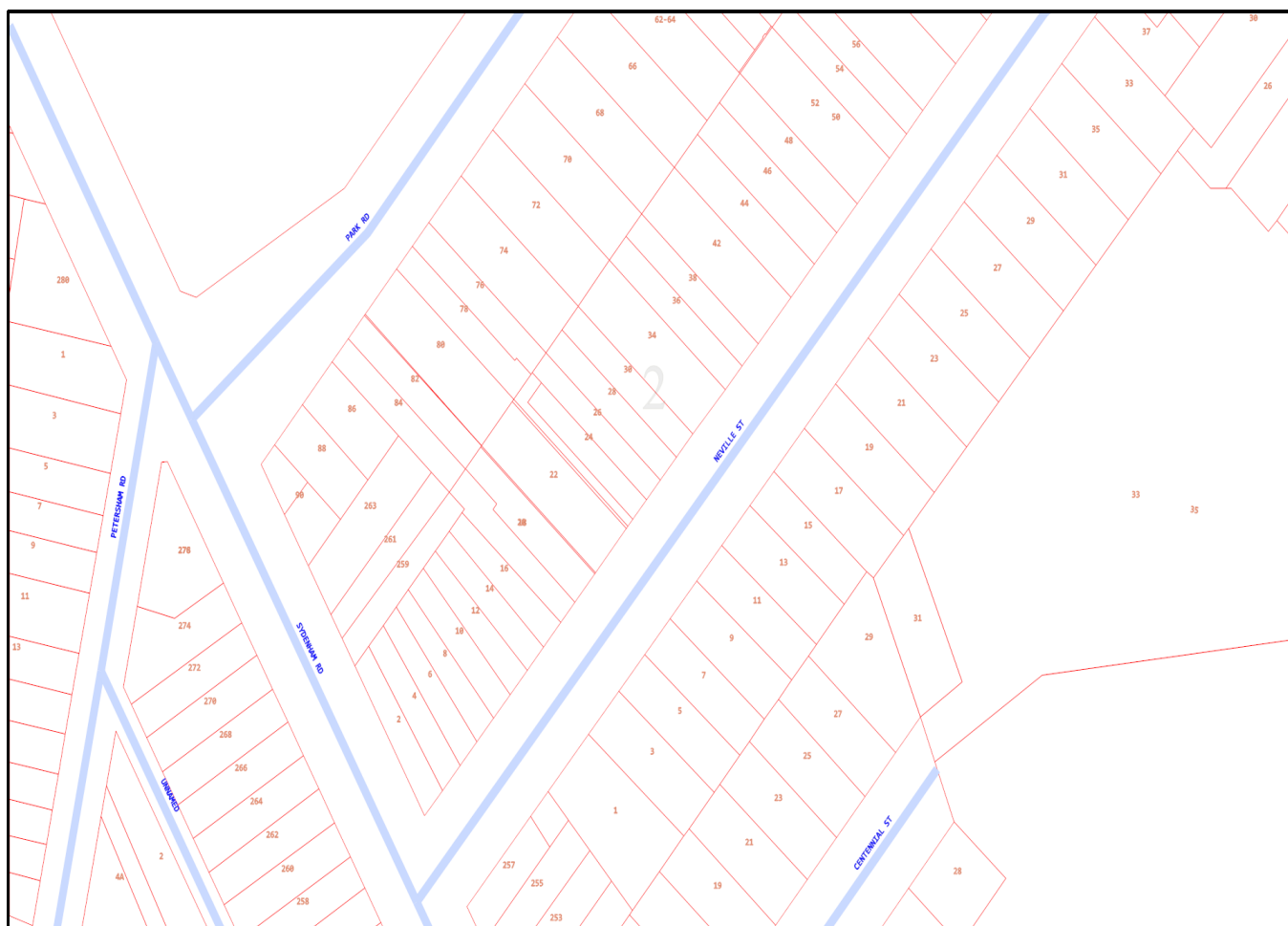
2	11	20	29	38	47
3	12	21	30	39	48
4	13	22	31	40	49
5	14	23	32	41	50
6	15	24	33	42	51
7	16	25	34	43	52
8	17	26	35	44	53
9	18	27	36	45	54



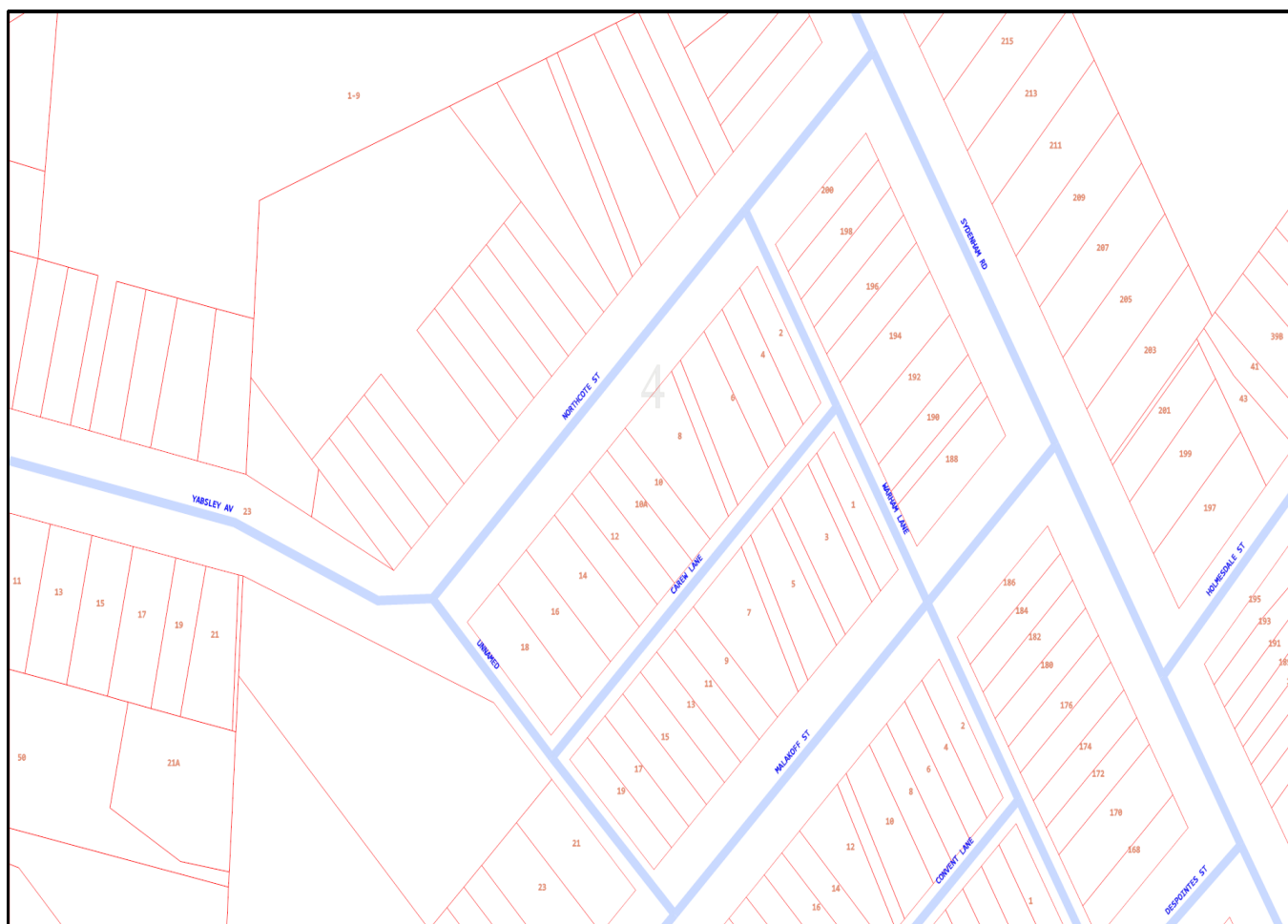
LEGEND

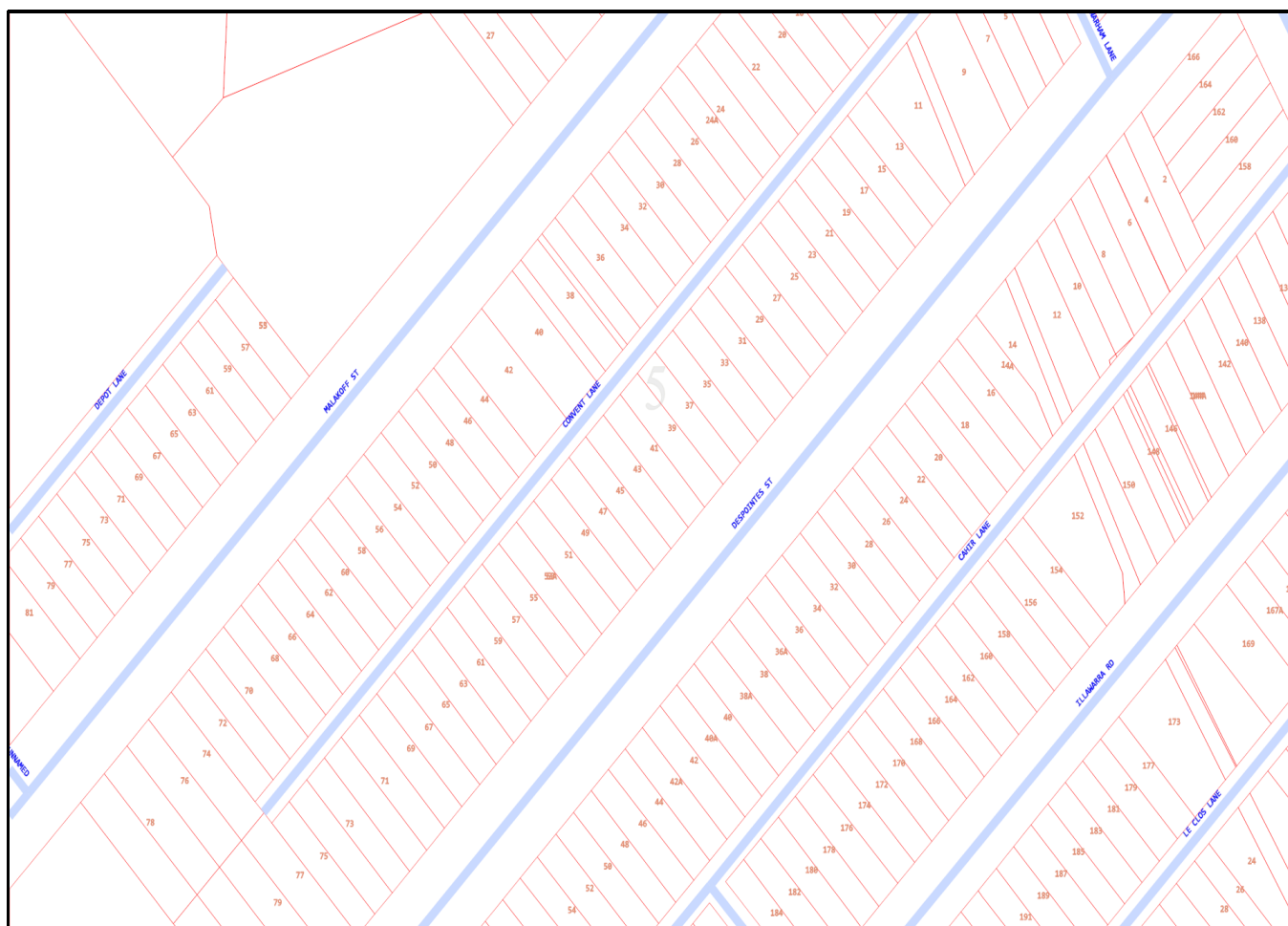
	Parcel and the location
	Pit with size "5"
	Power Pit with size "2E". Valid PIT Size: e.g. 2E, 5E, 6E, 8E, 9E, E, null.
	Manhole
	Pillar
	Cable count of trench is 2. One "Other size" PVC conduit (PO) owned by Telstra (-T-), between pits of sizes, "5" and "9" are 25.0m apart. One 40mm PVC conduit (P40) owned by NBN, between pits of sizes, "5" and "9" are 20.0m apart.
	2 Direct buried cables between pits of sizes, "5" and "9" are 10.0m apart.
	Trench containing any INSERVICE/CONSTRUCTED (Copper/RF/Fibre) cables.
	Trench containing only DESIGNED/PLANNED (Copper/RF/Fibre/Power) cables.
	Trench containing any INSERVICE/CONSTRUCTED (Power) cables.
	Road and the street name "Broadway ST"
Scale	0 20 40 60 Meters 1:2000 1 cm equals 20 m 

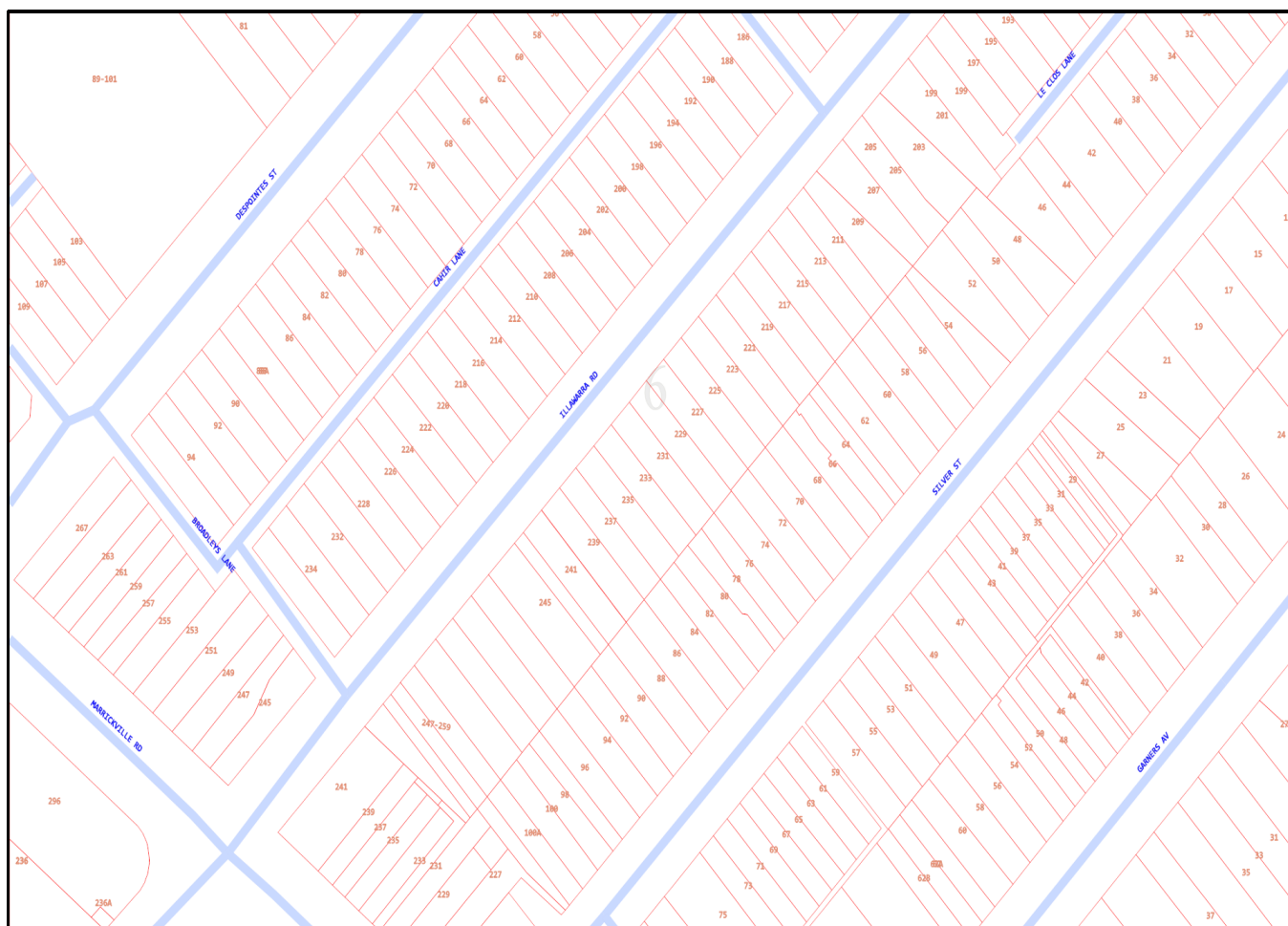


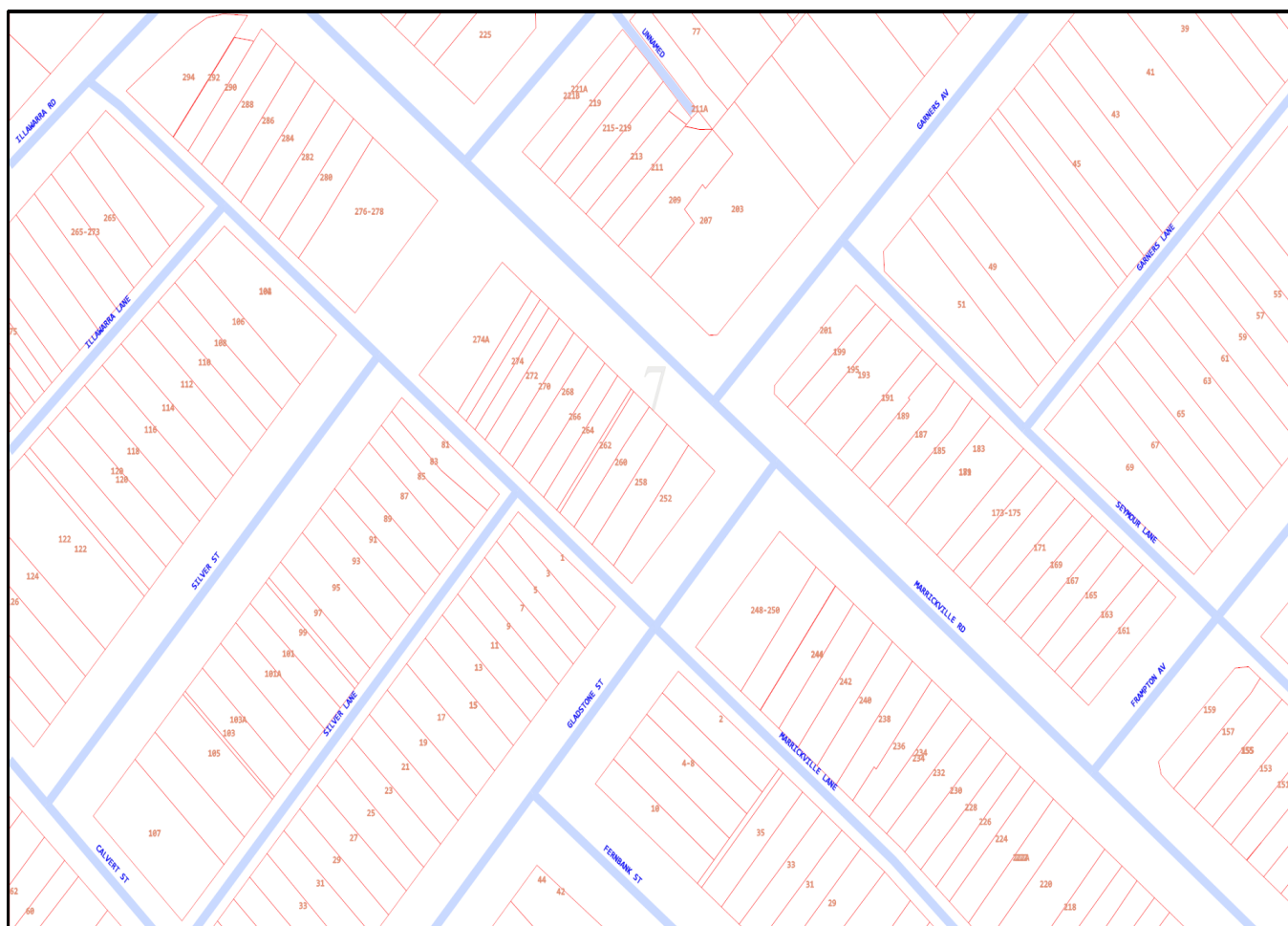


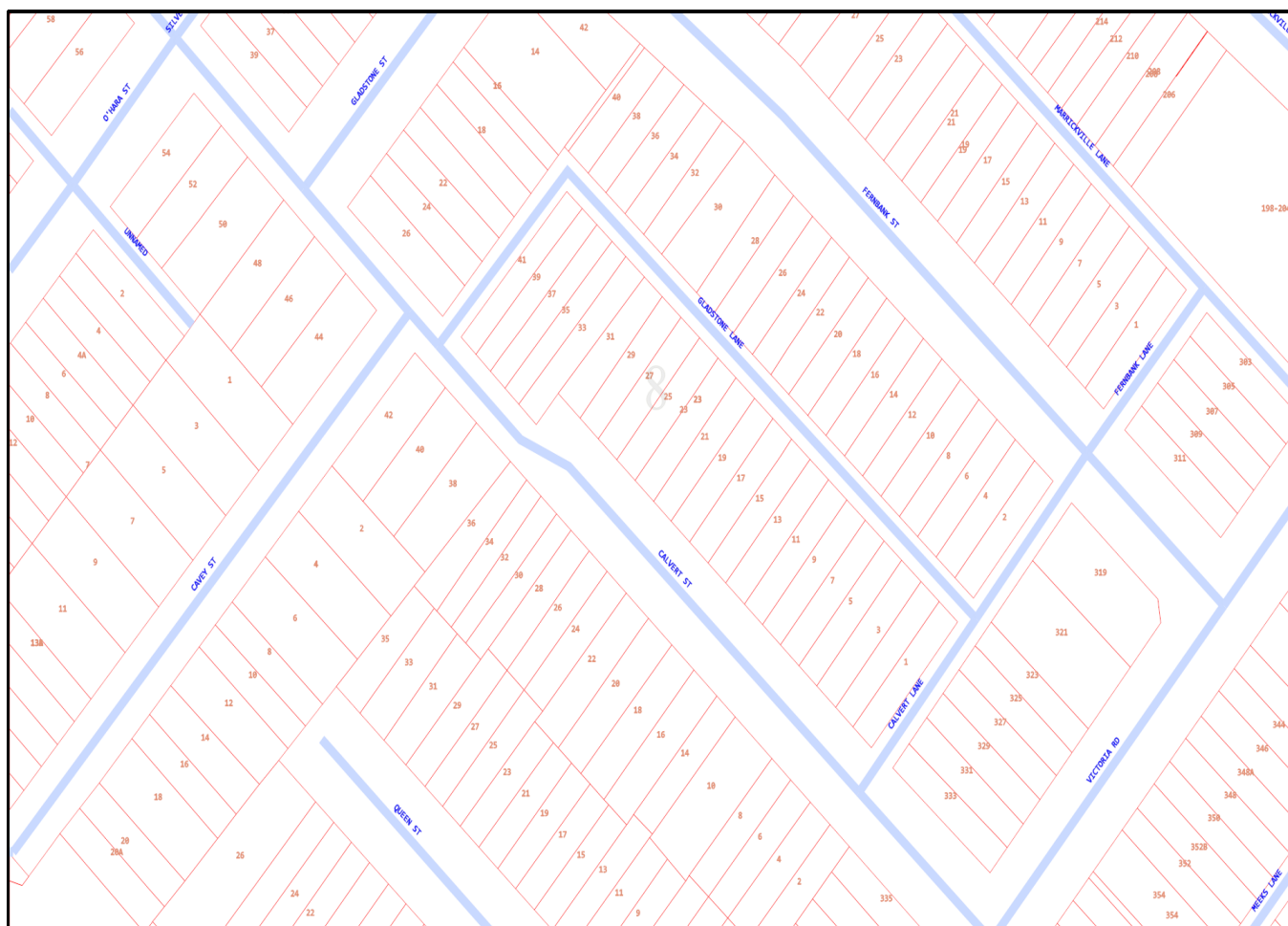


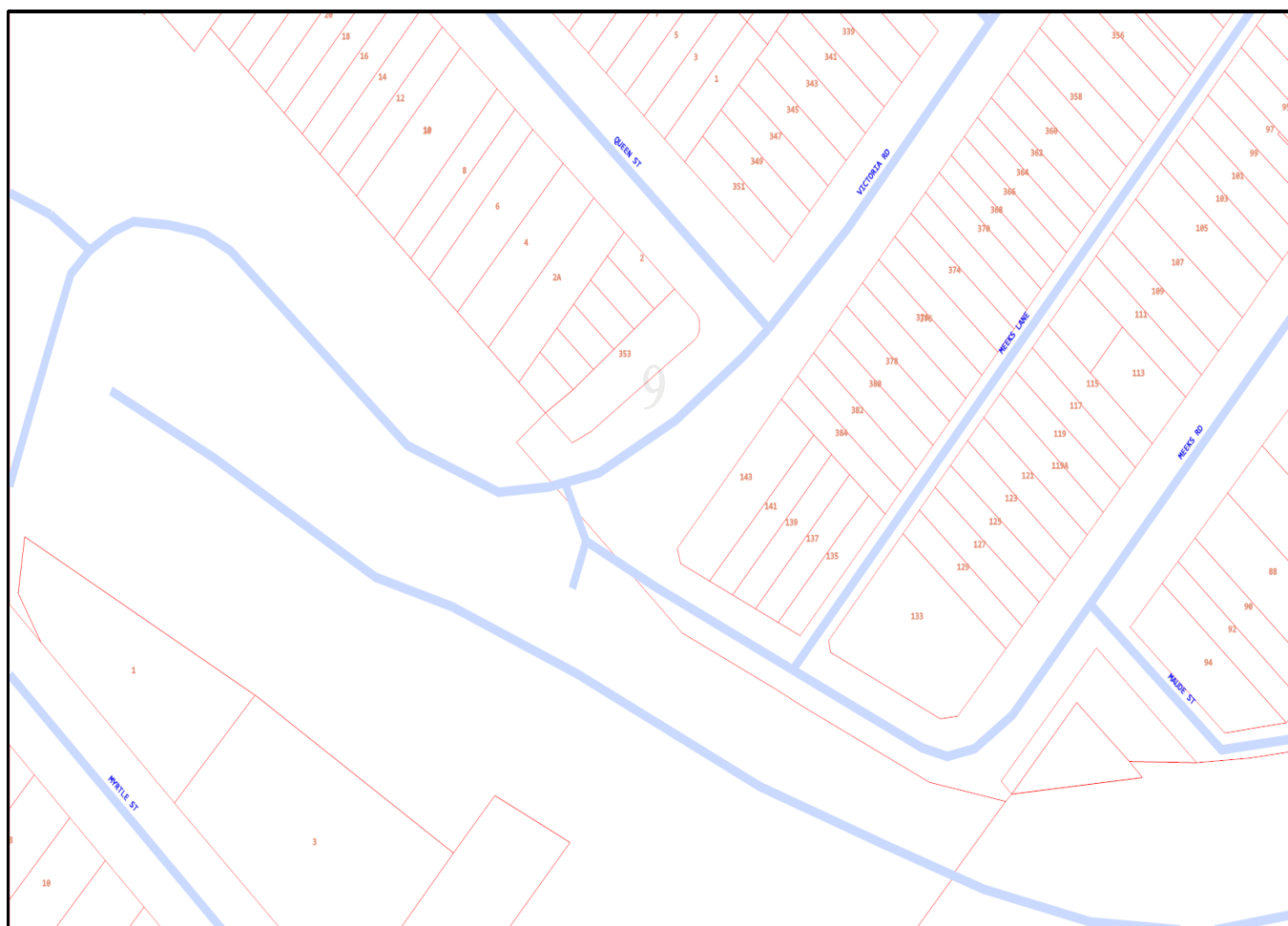


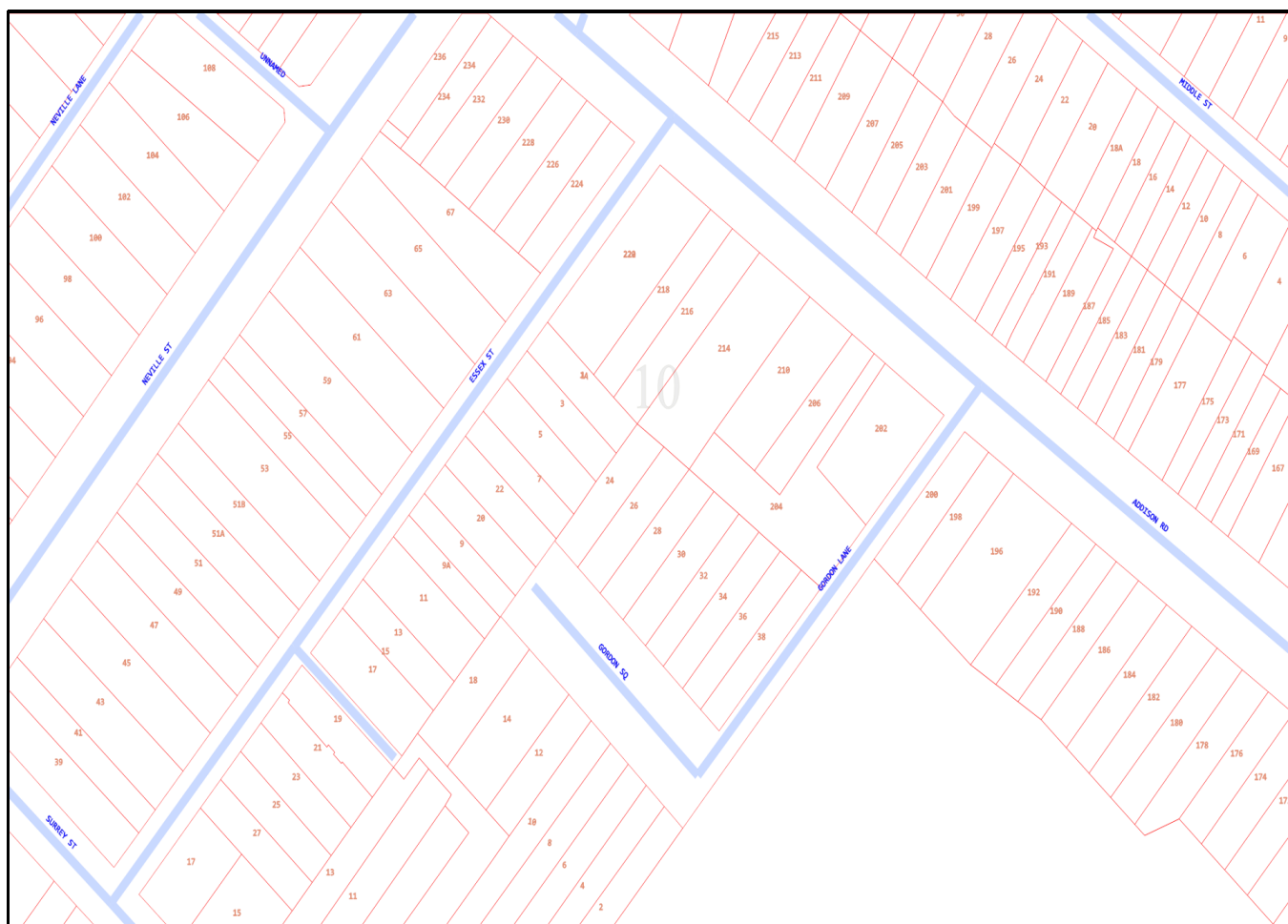


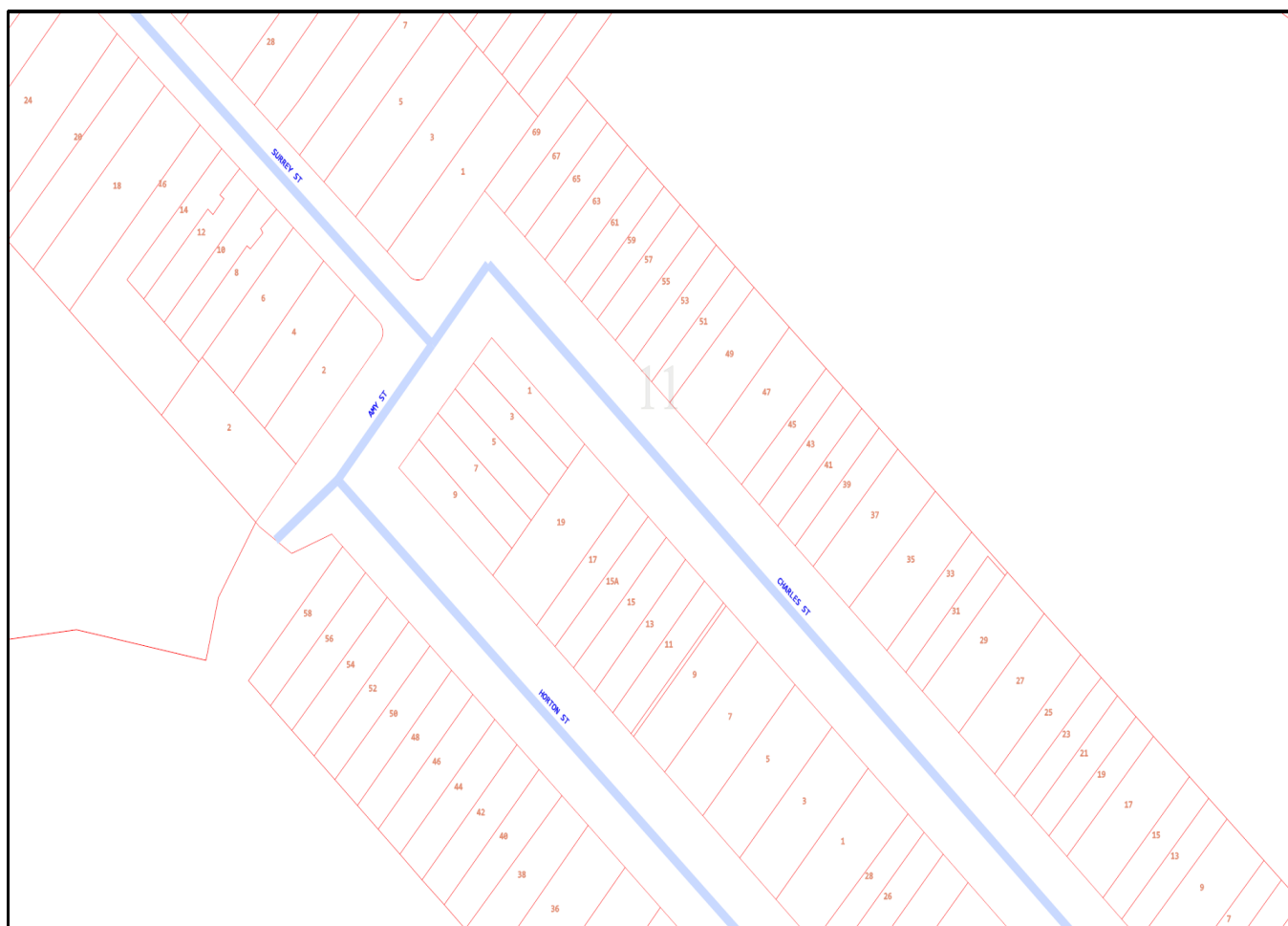


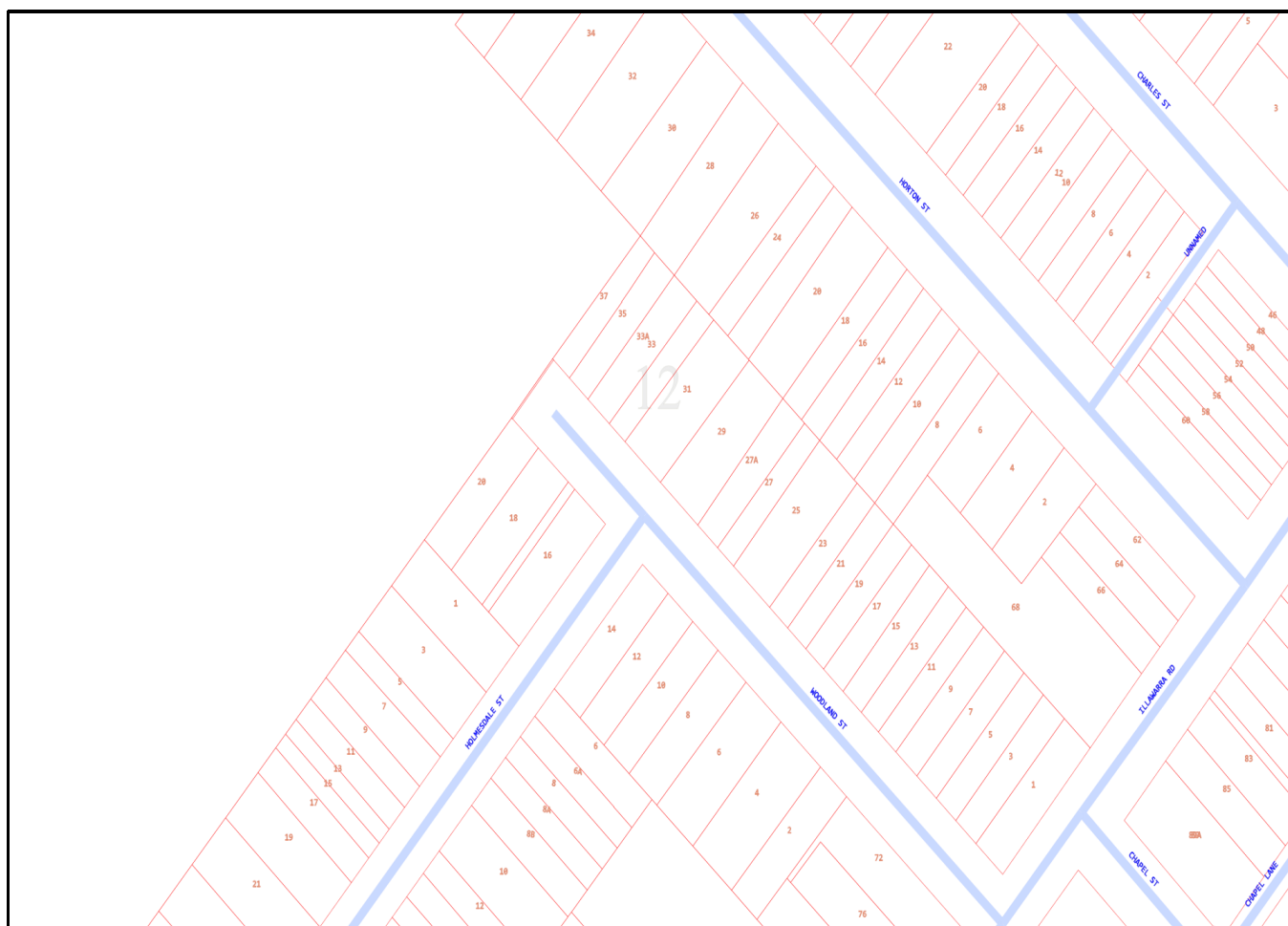


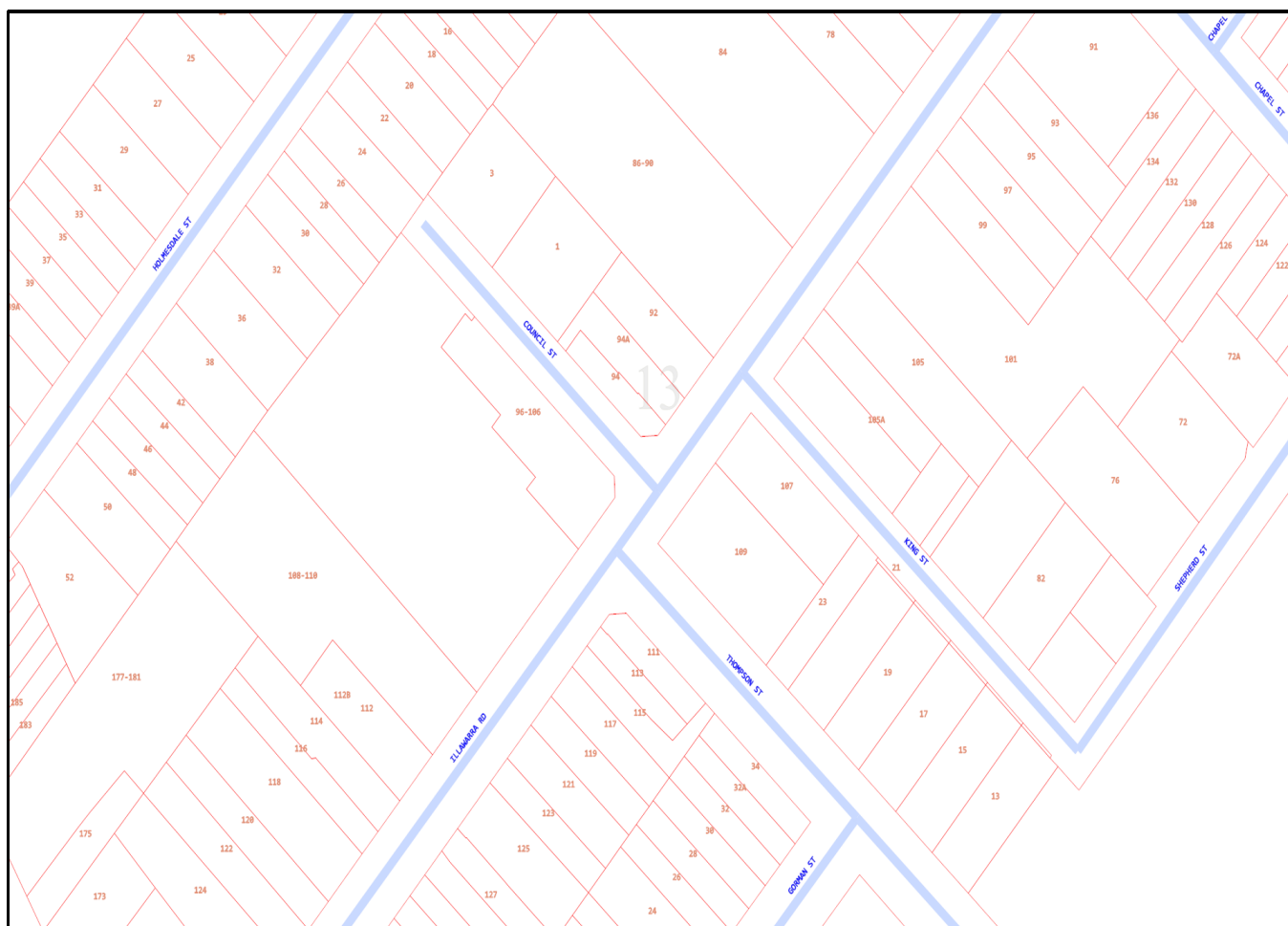


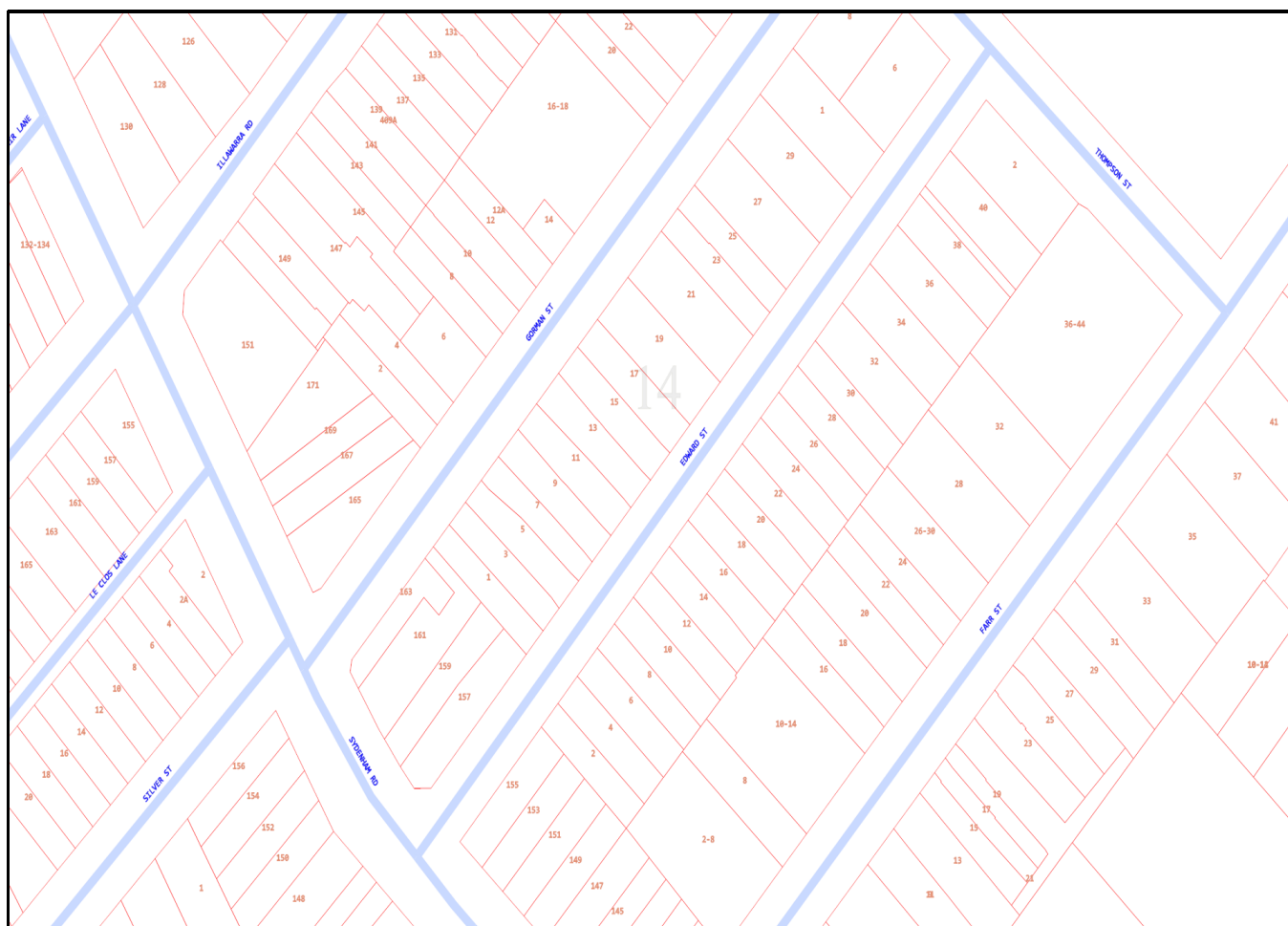


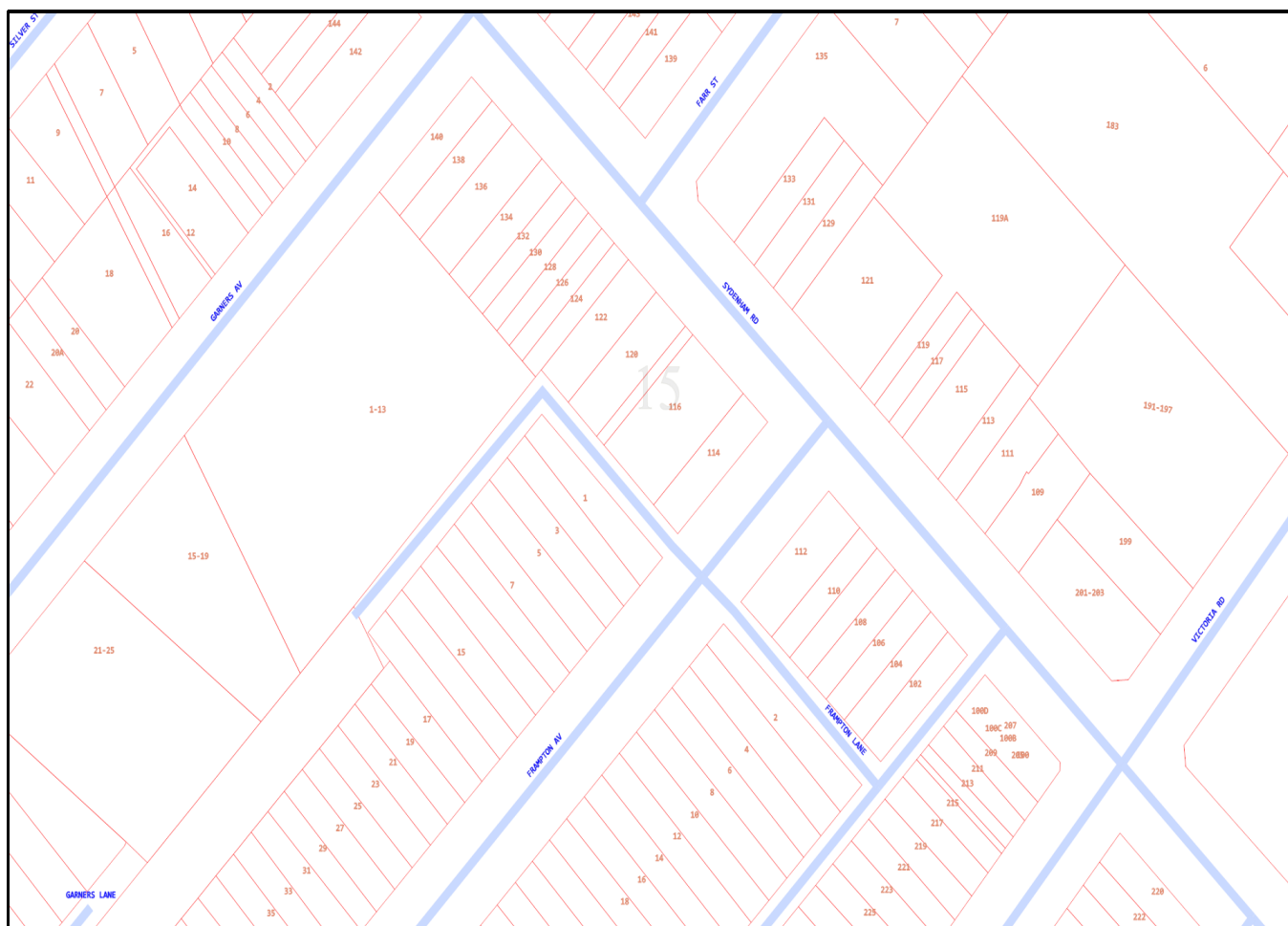


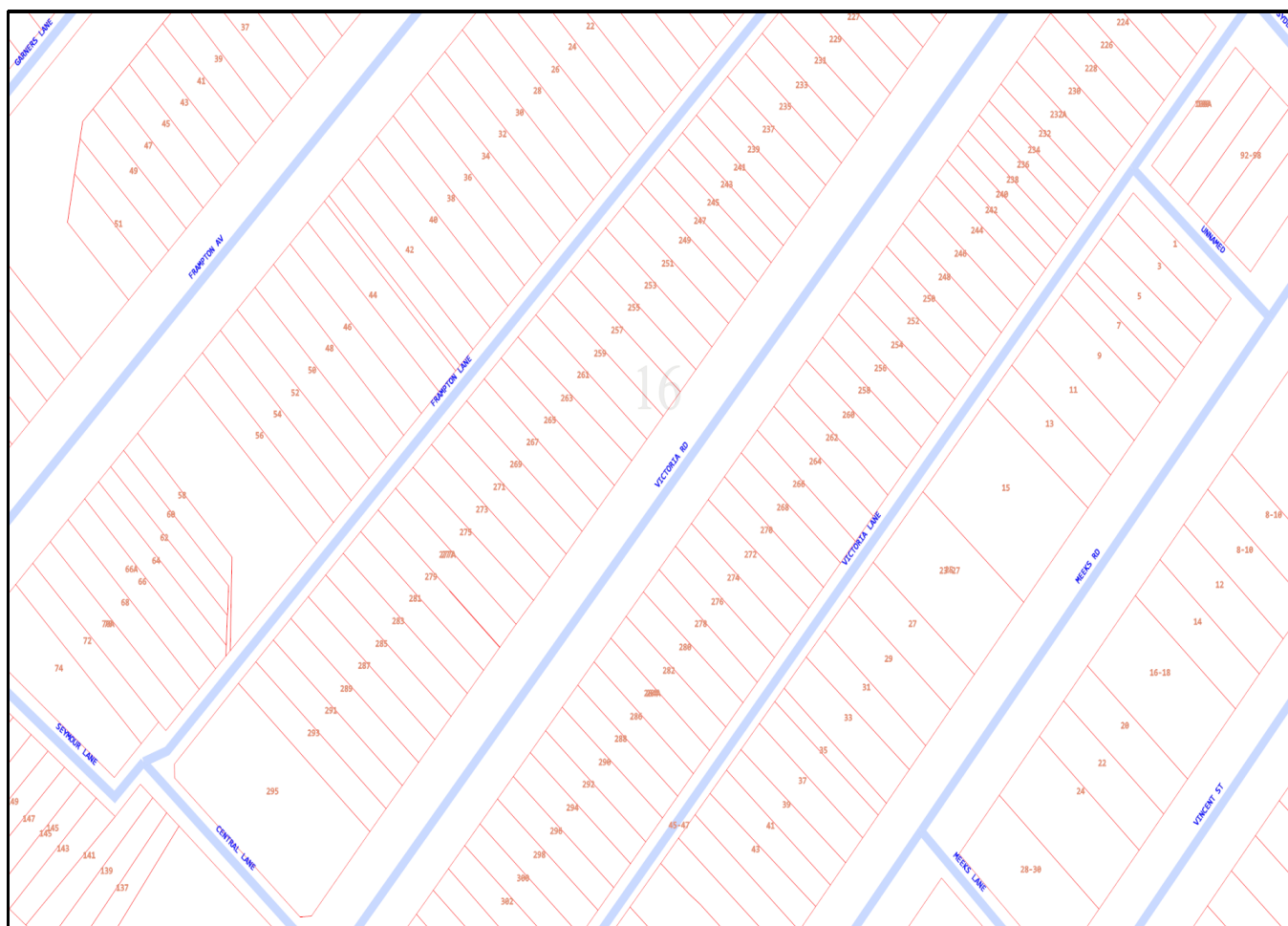


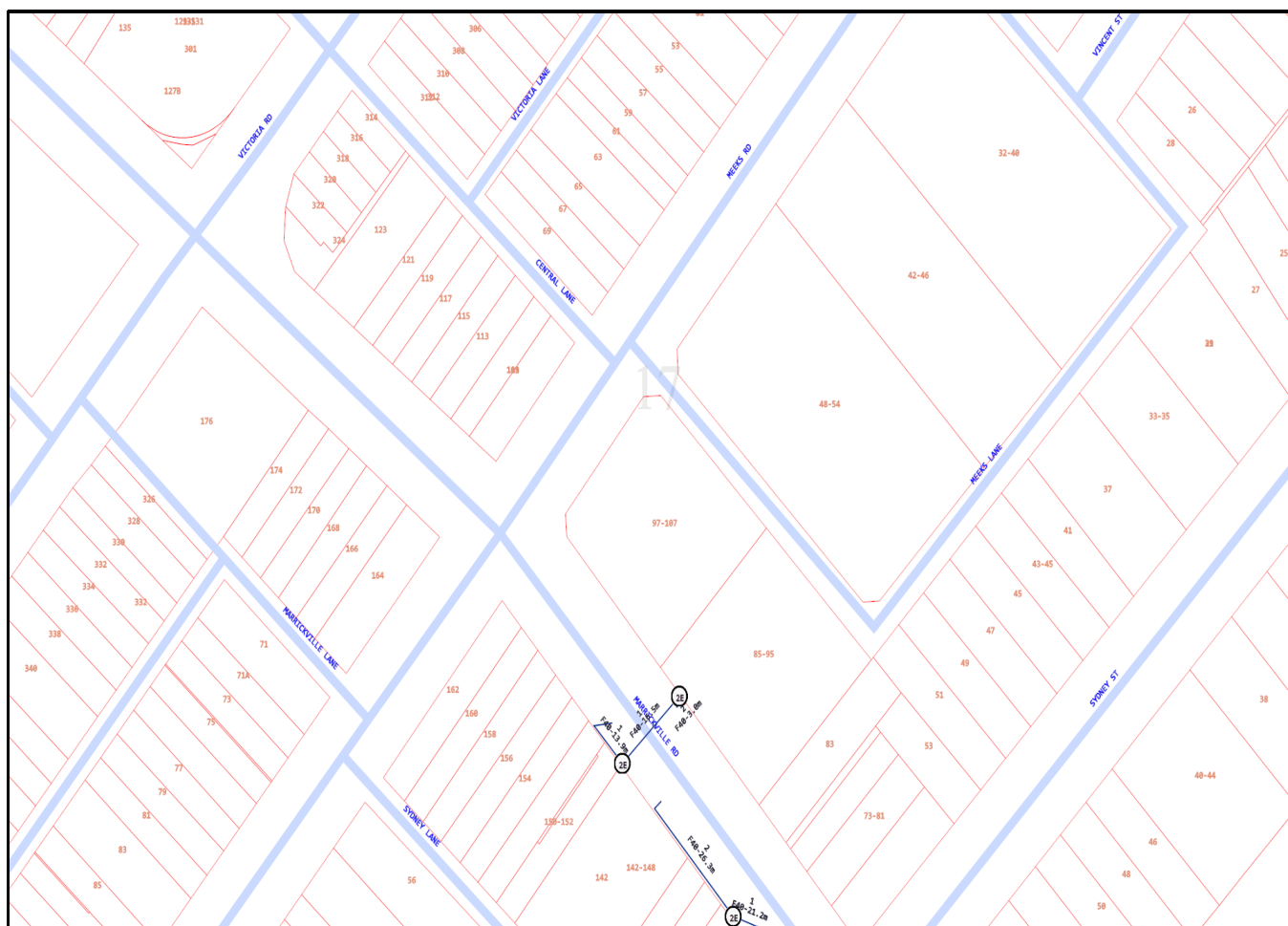


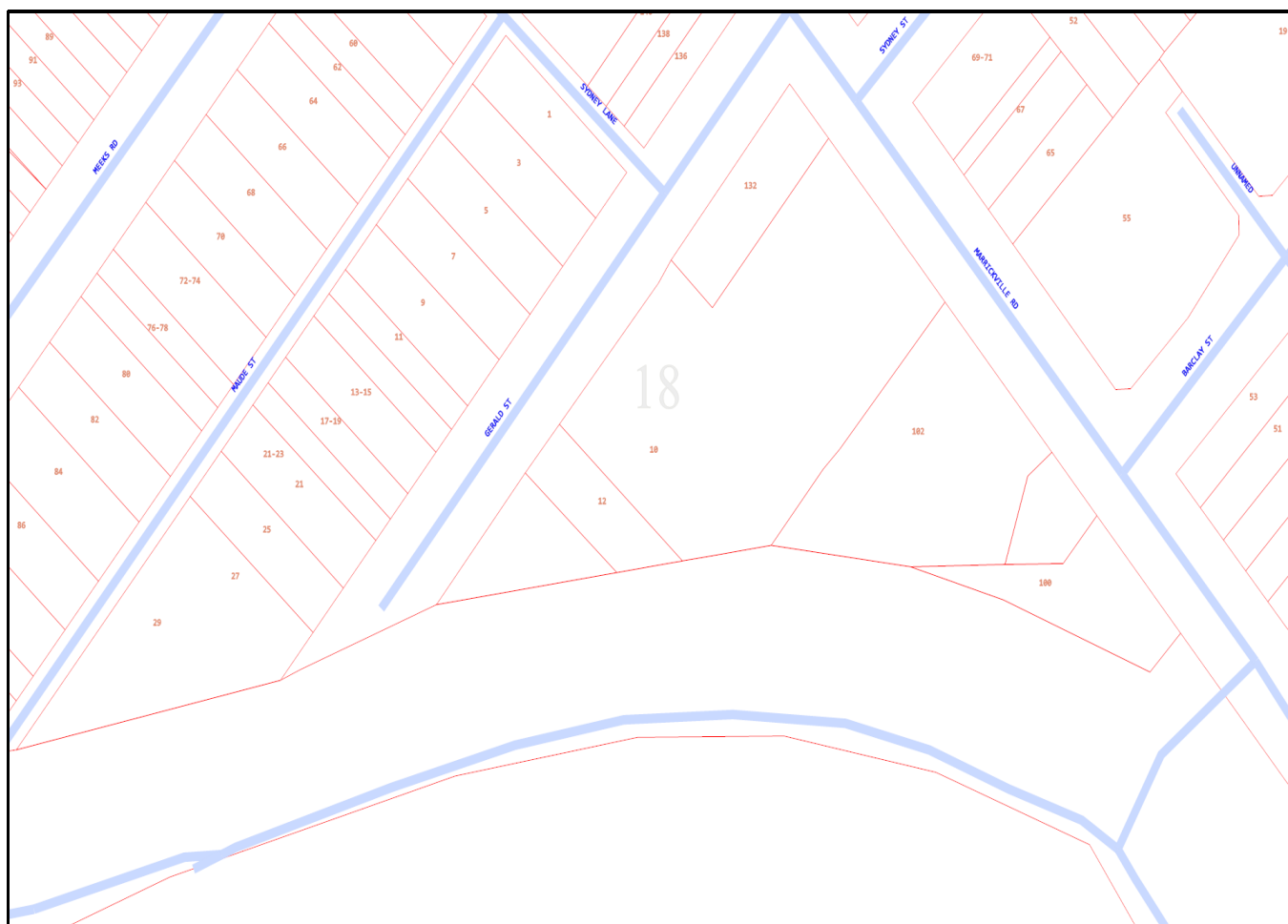


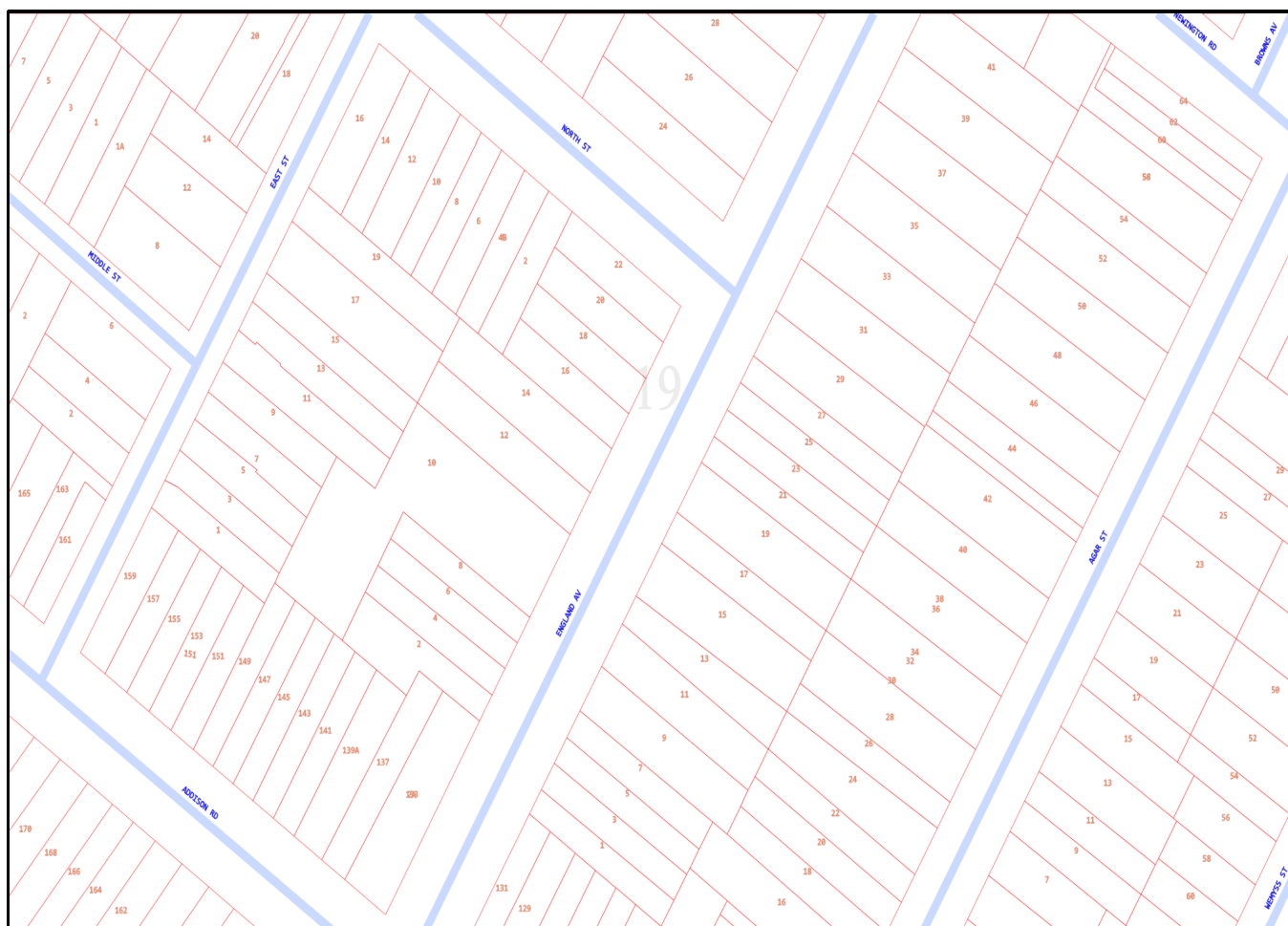


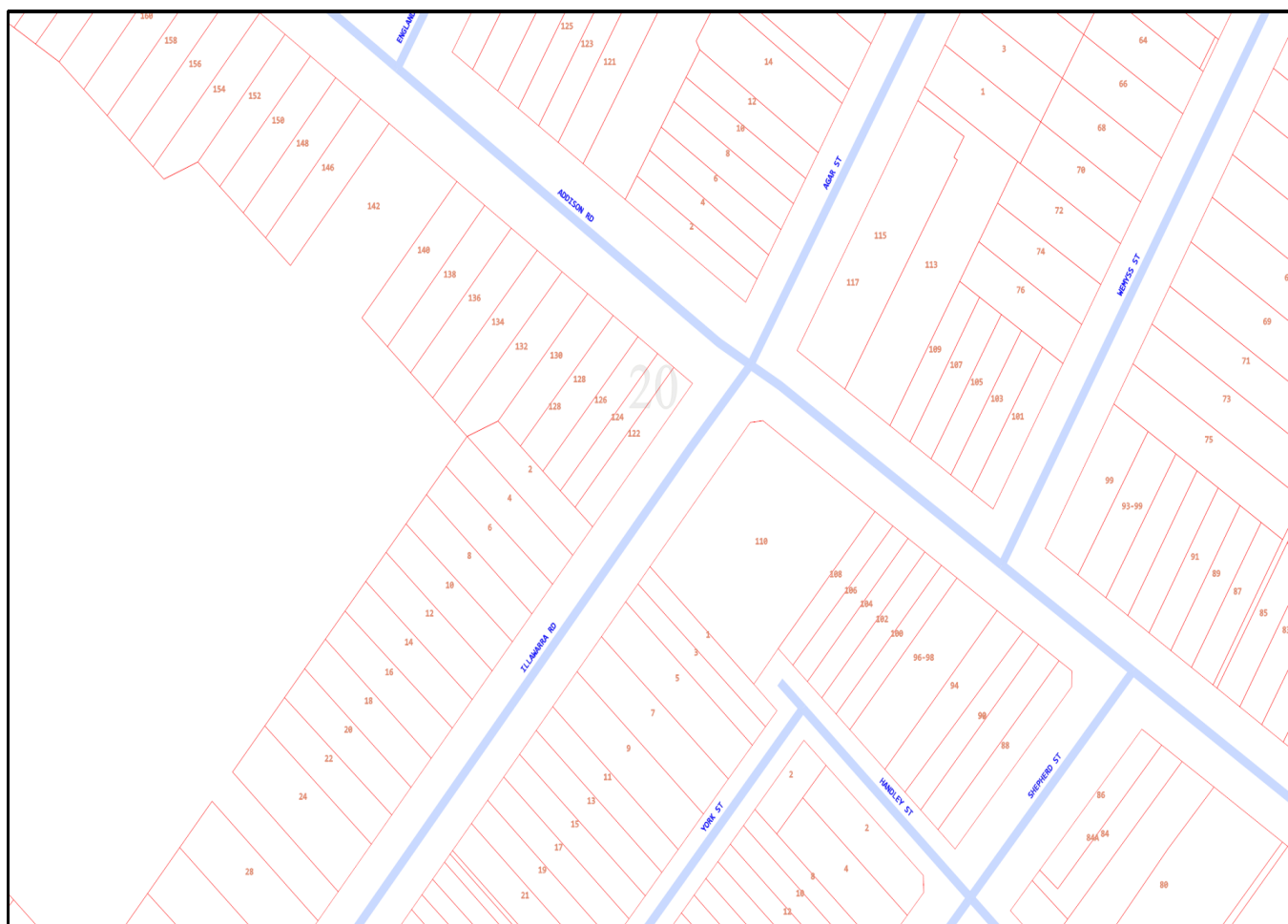


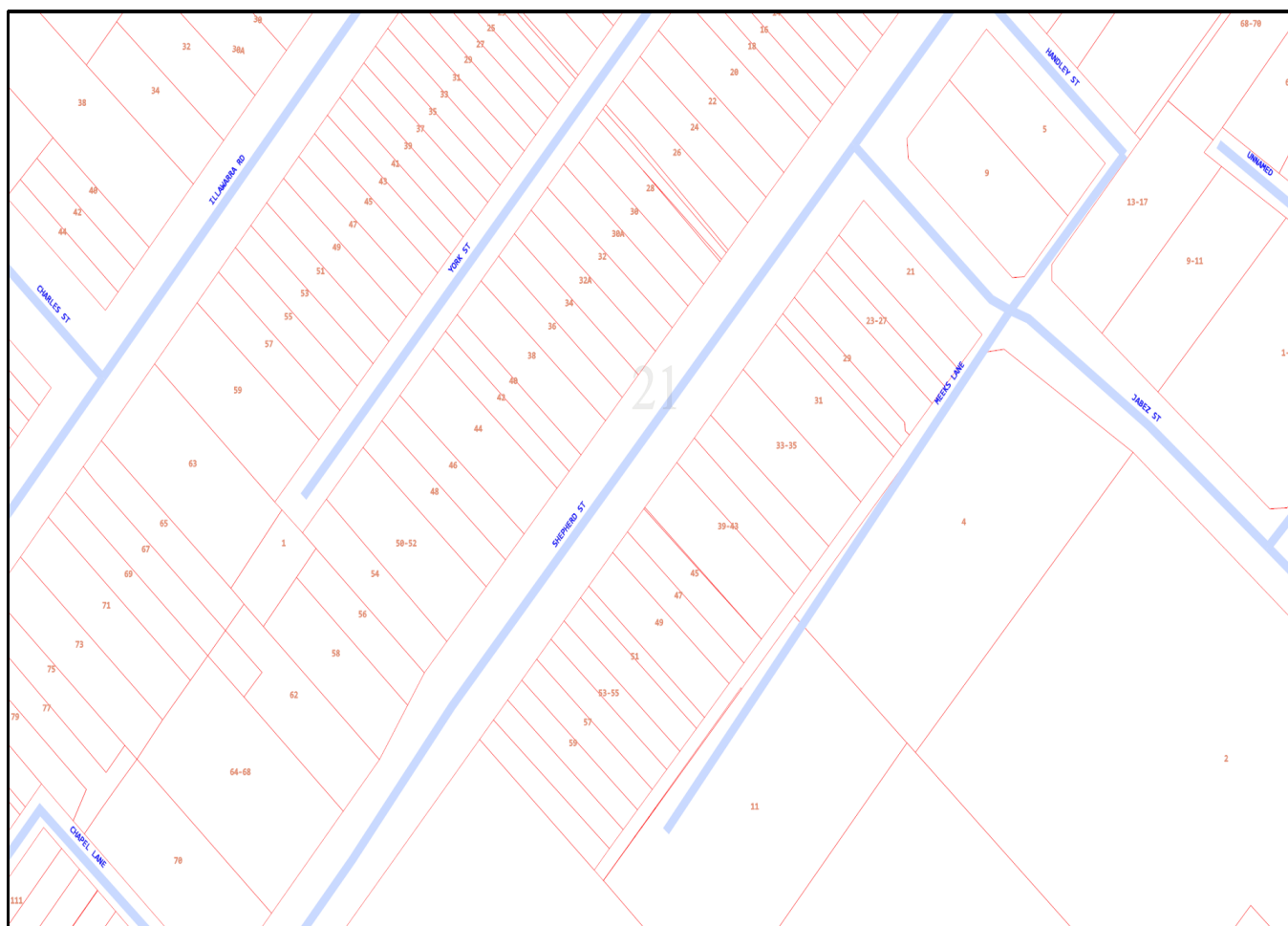


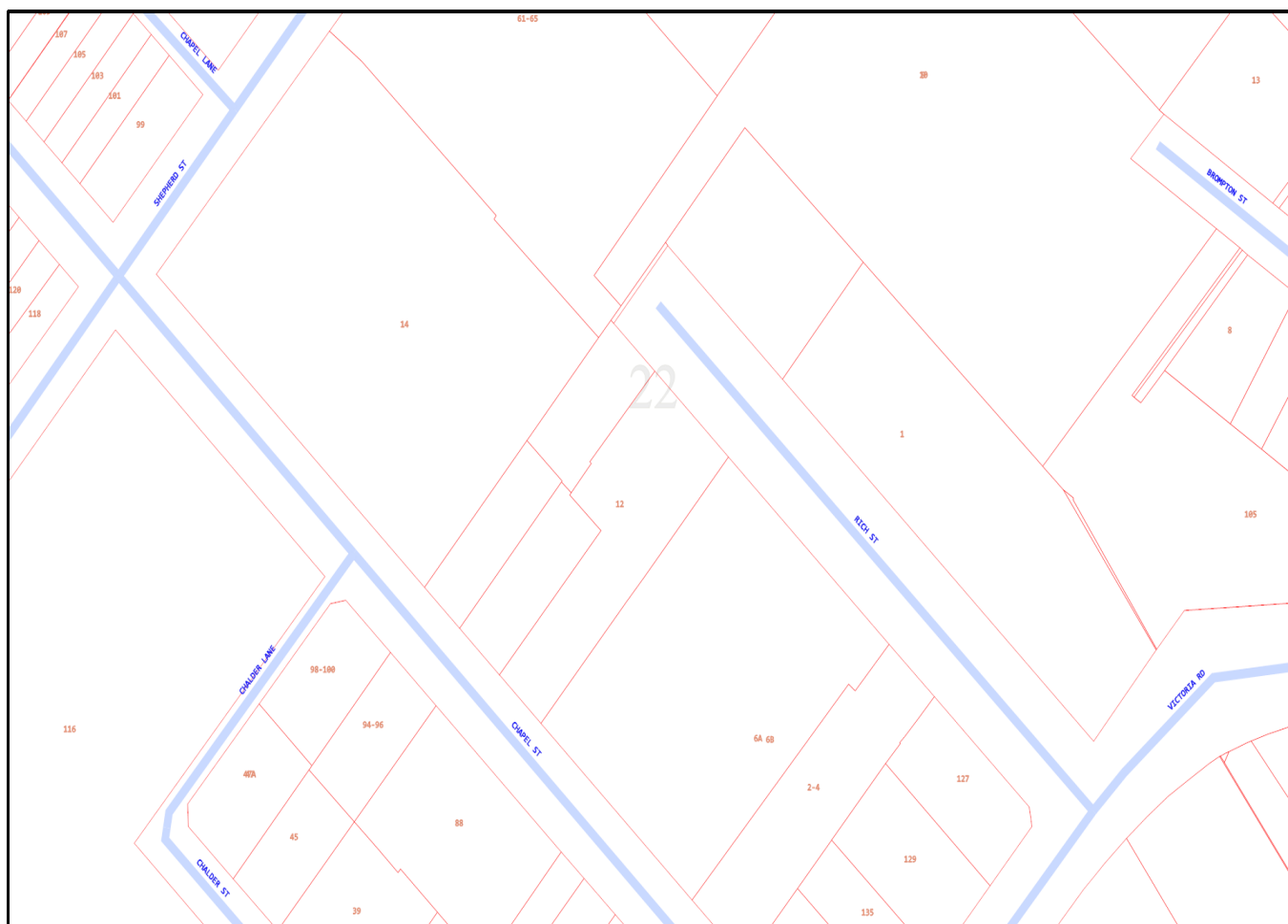


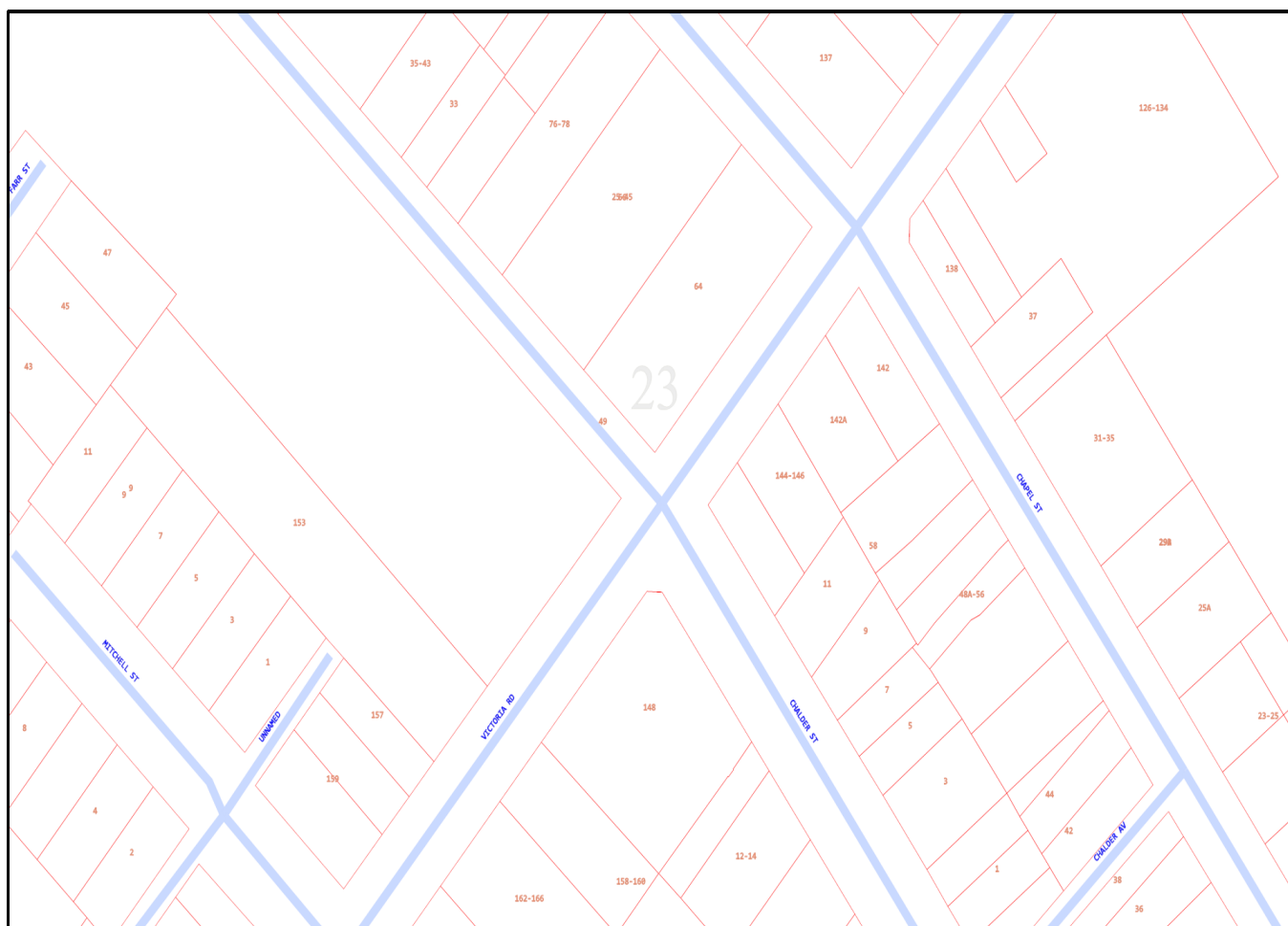


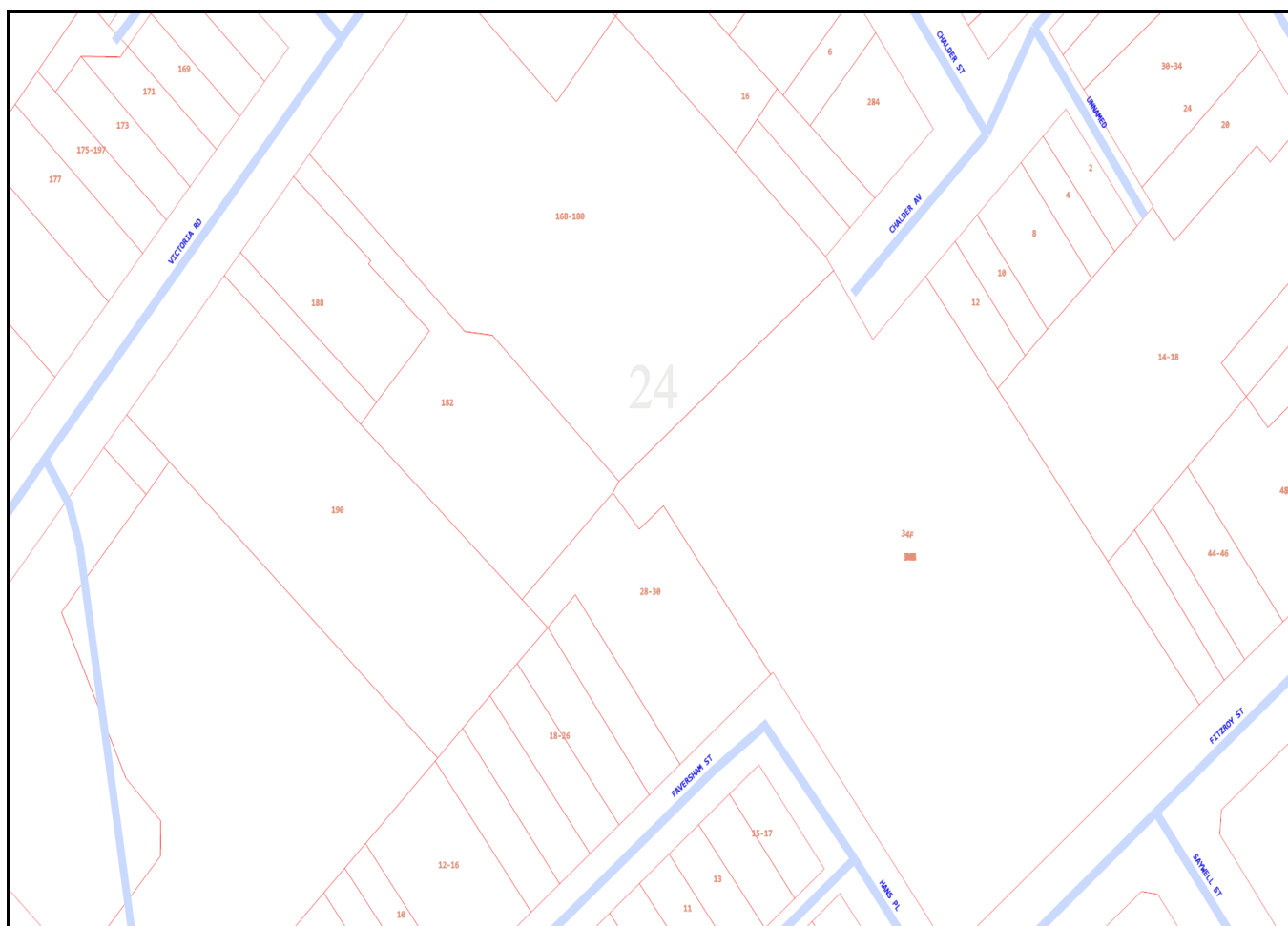












Emergency Contacts

You must immediately report any damage to **nbn**TM network that you are/become aware of. Notification may be by telephone - 1800 626 329.