




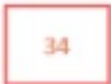




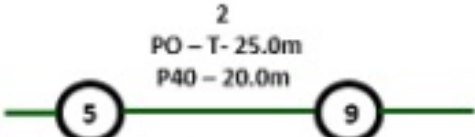






## Indicative Plans

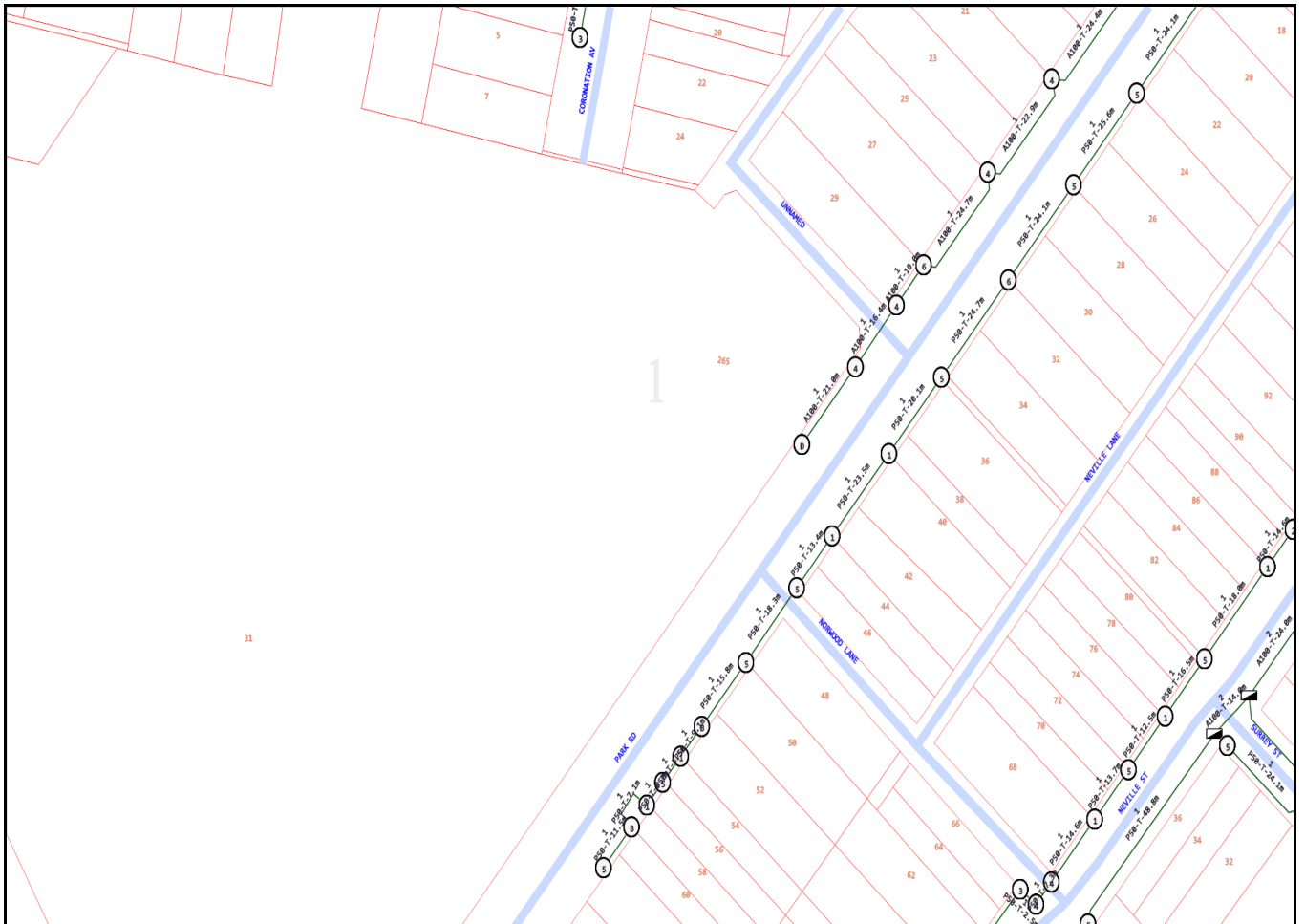
<b>Issue Date:</b>	18/11/2019	 <b>DIAL BEFORE YOU DIG</b> <a href="http://www.1100.com.au">www.1100.com.au</a>
<b>Location:</b>	Sydney Steel Road , Marrickville , NSW , 2204	

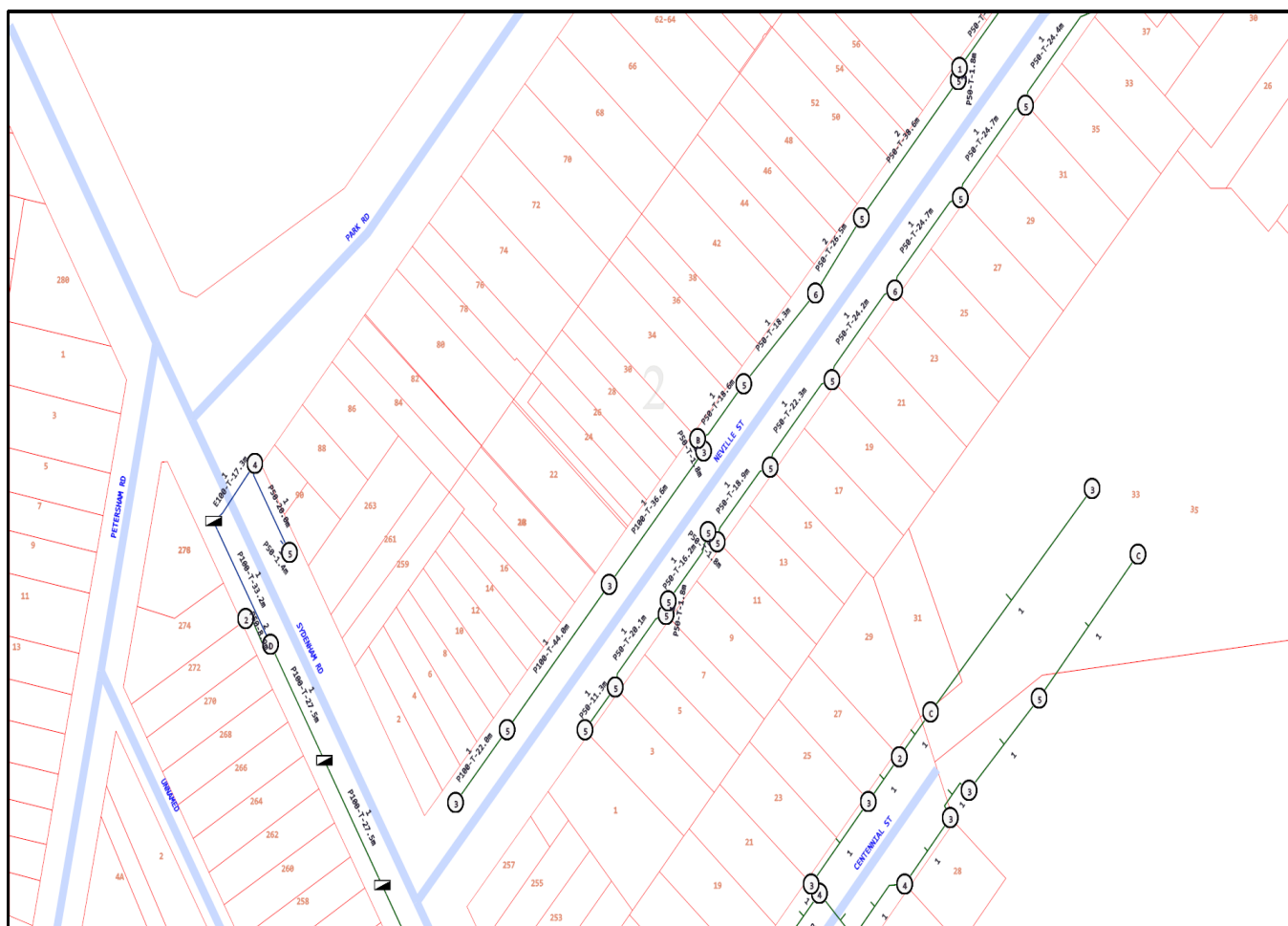
2	11	20	29	38	47
3	12	21	30	39	48
4	13	22	31	40	49
5	14	23	32	41	50
6	15	24	33	42	51
7	16	25	34	43	52
8	17	26	35	44	53
9	18	27	36	45	54

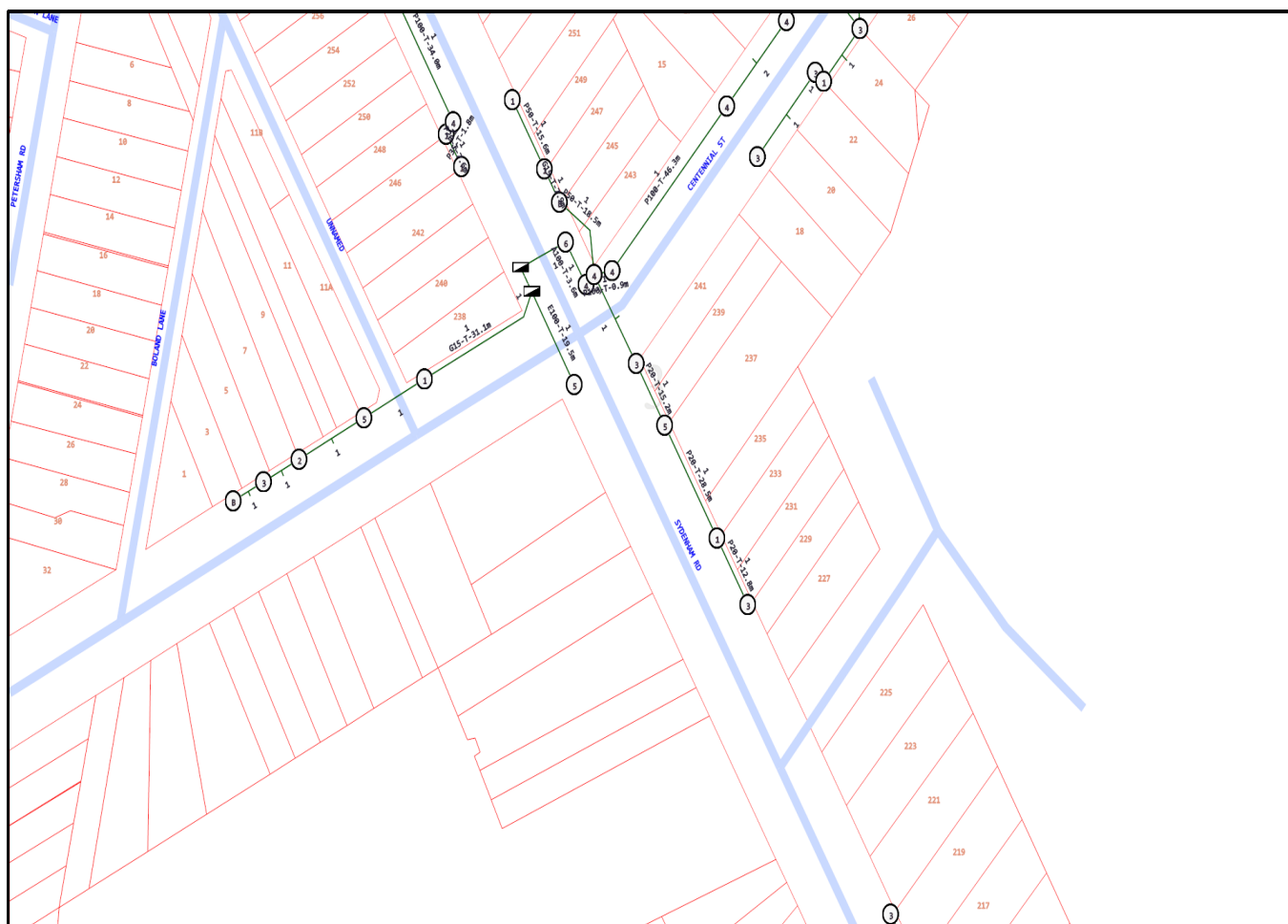


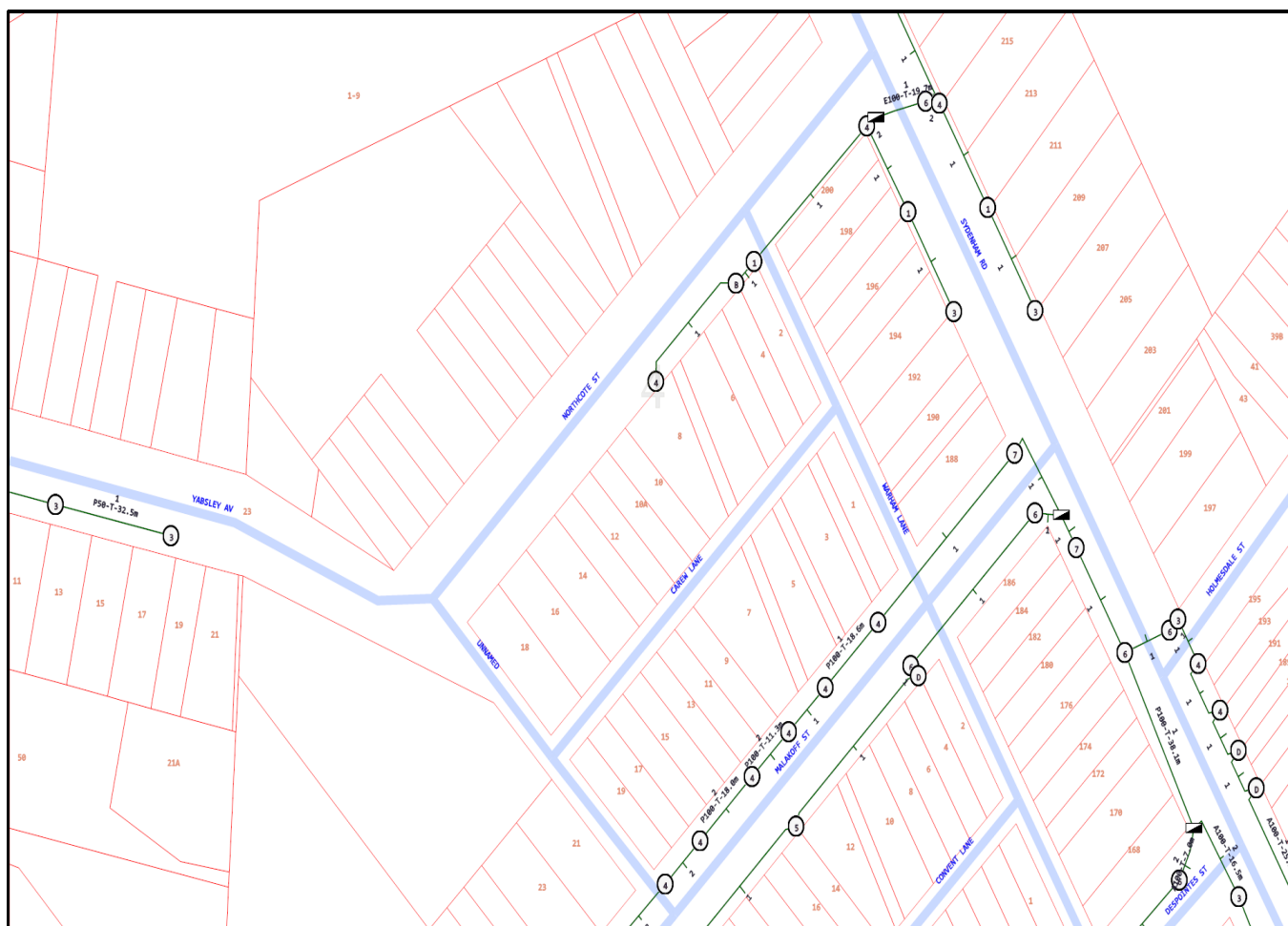
## LEGEND

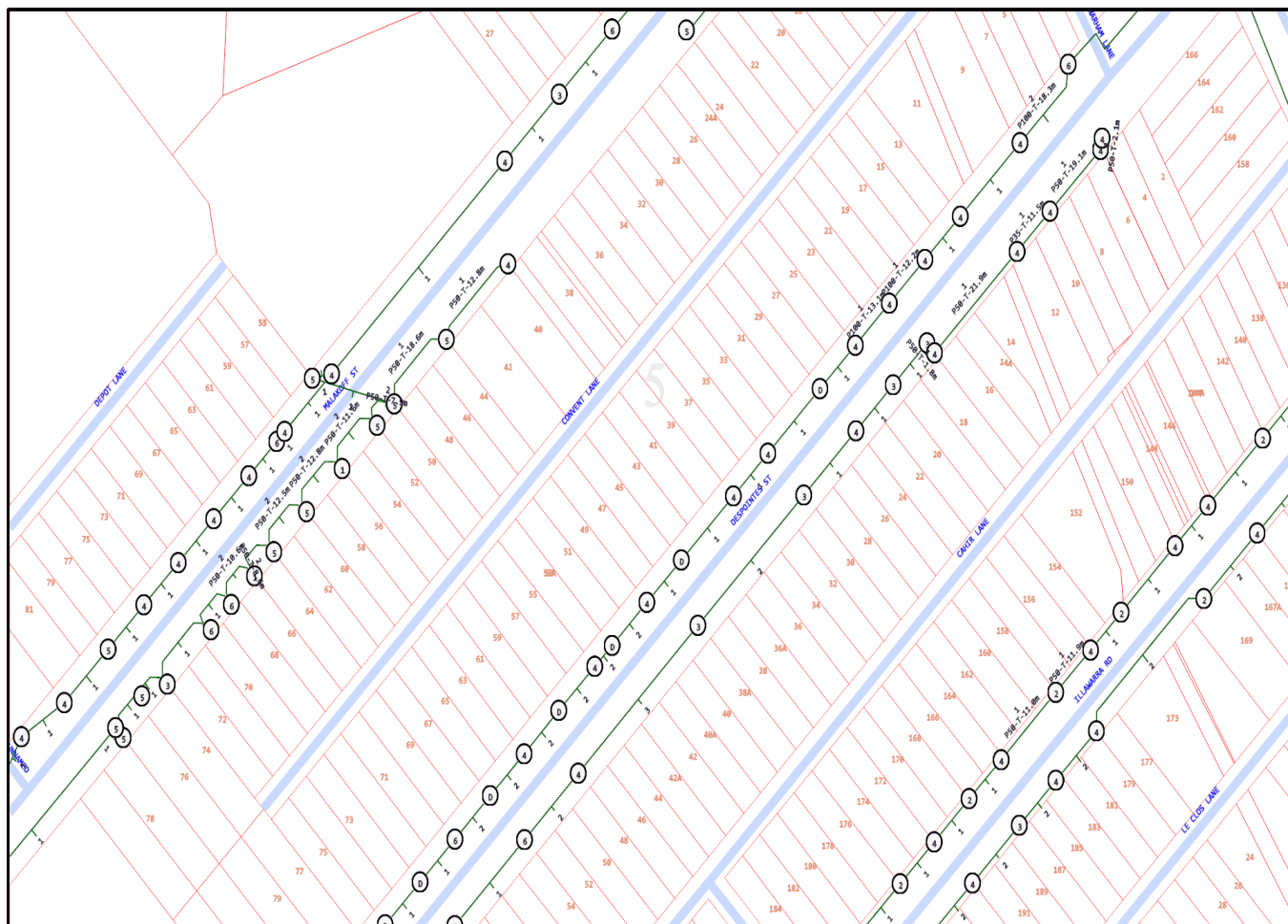
	Parcel and the location
	Pit with size "5"
	Power Pit with size "2E". Valid PIT Size: e.g. 2E, 5E, 6E, 8E, 9E, E, null.
	Manhole
	Pillar
	Cable count of trench is 2. One "Other size" PVC conduit (PO) owned by Telstra (-T-), between pits of sizes, "5" and "9" are 25.0m apart. One 40mm PVC conduit (P40) owned by NBN, between pits of sizes, "5" and "9" are 20.0m apart.
	2 Direct buried cables between pits of sizes, "5" and "9" are 10.0m apart.
	Trench containing any <b>INSERVICE/CONSTRUCTED</b> (Copper/RF/Fibre) cables.
	Trench containing only <b>DESIGNED/PLANNED</b> (Copper/RF/Fibre/Power) cables.
	Trench containing any <b>INSERVICE/CONSTRUCTED</b> (Power) cables.
	Road and the street name "Broadway ST"
Scale	0 20 40 60 Meters 1:2000 1 cm equals 20 m 

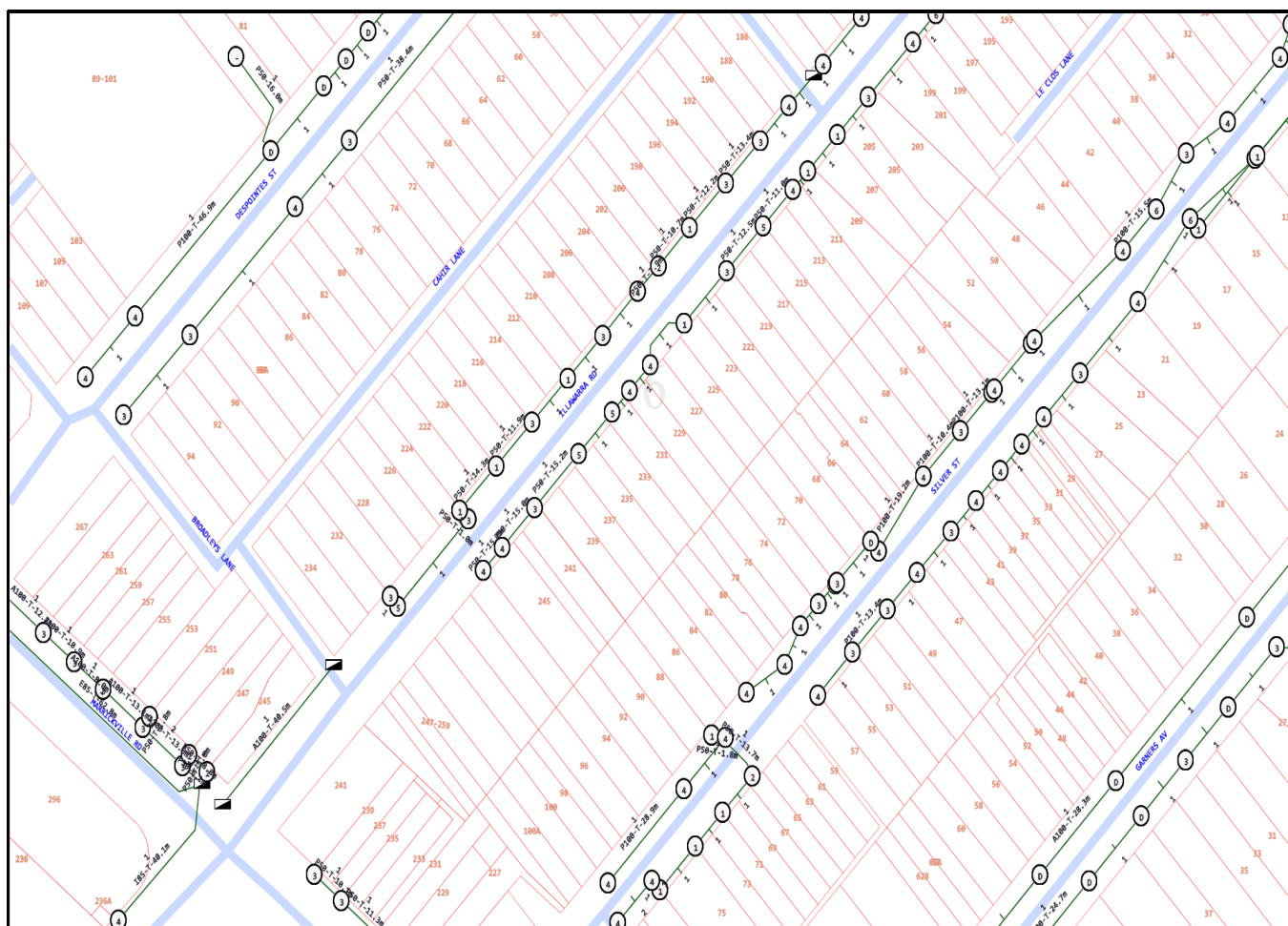


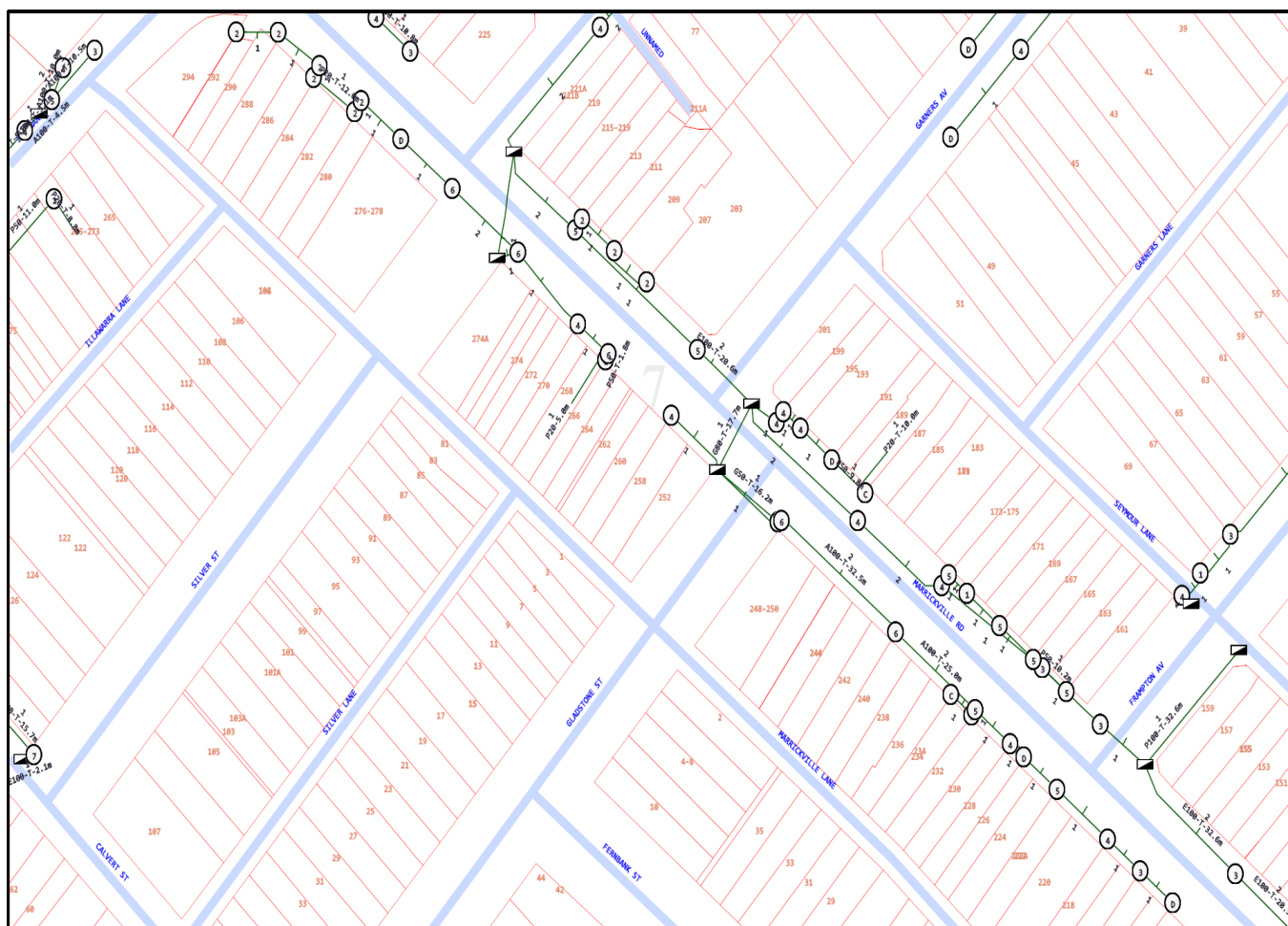


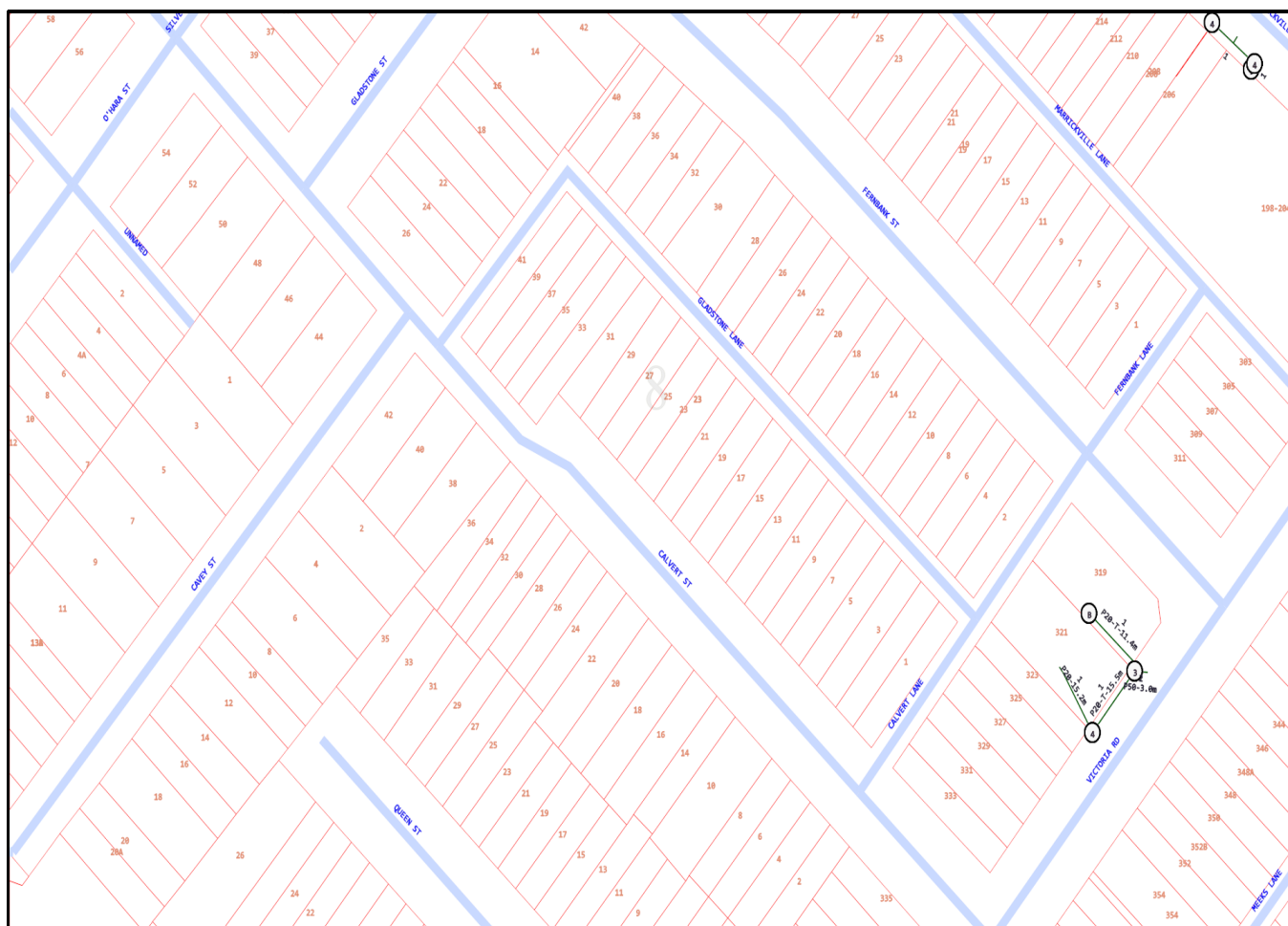


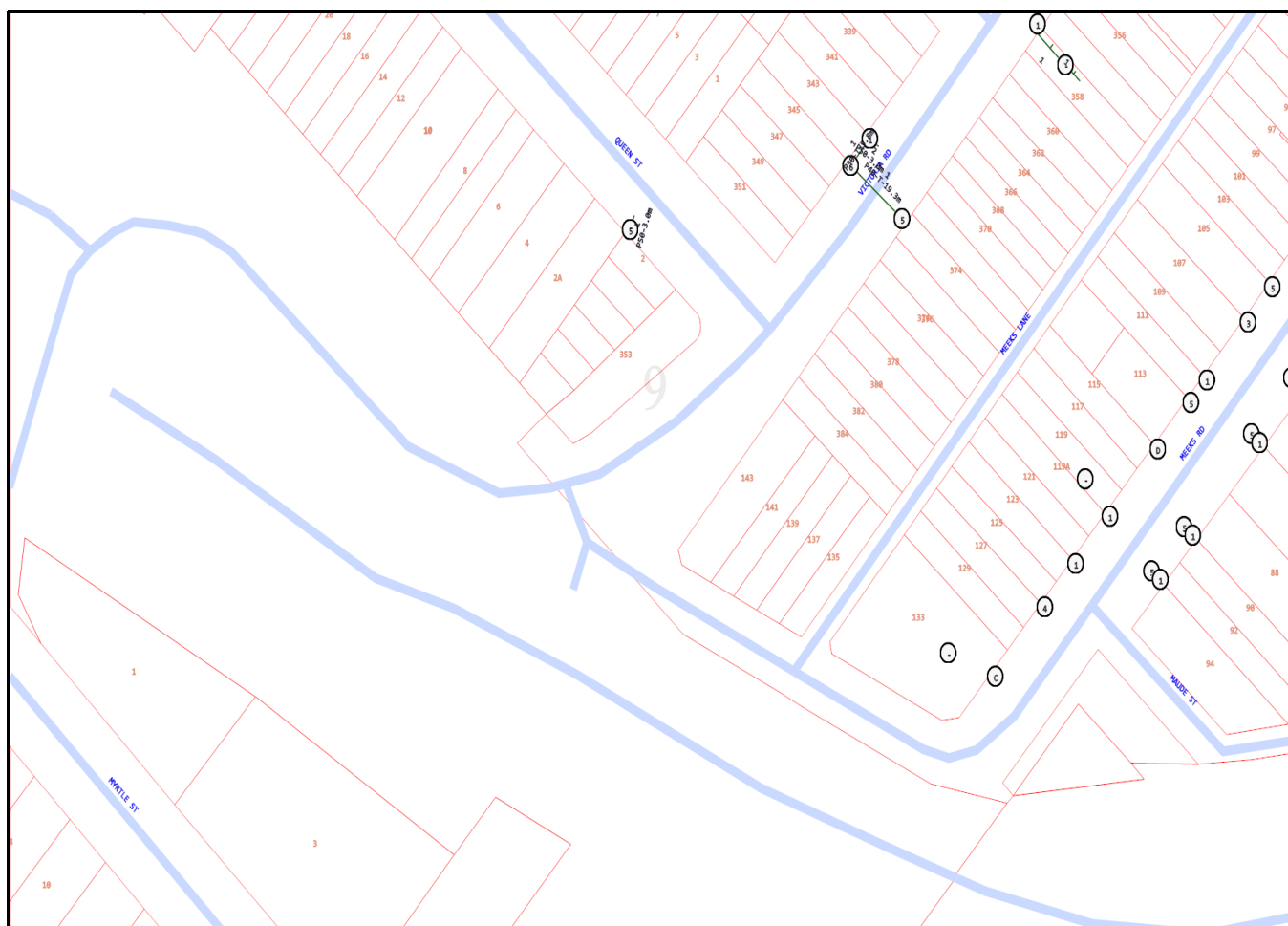


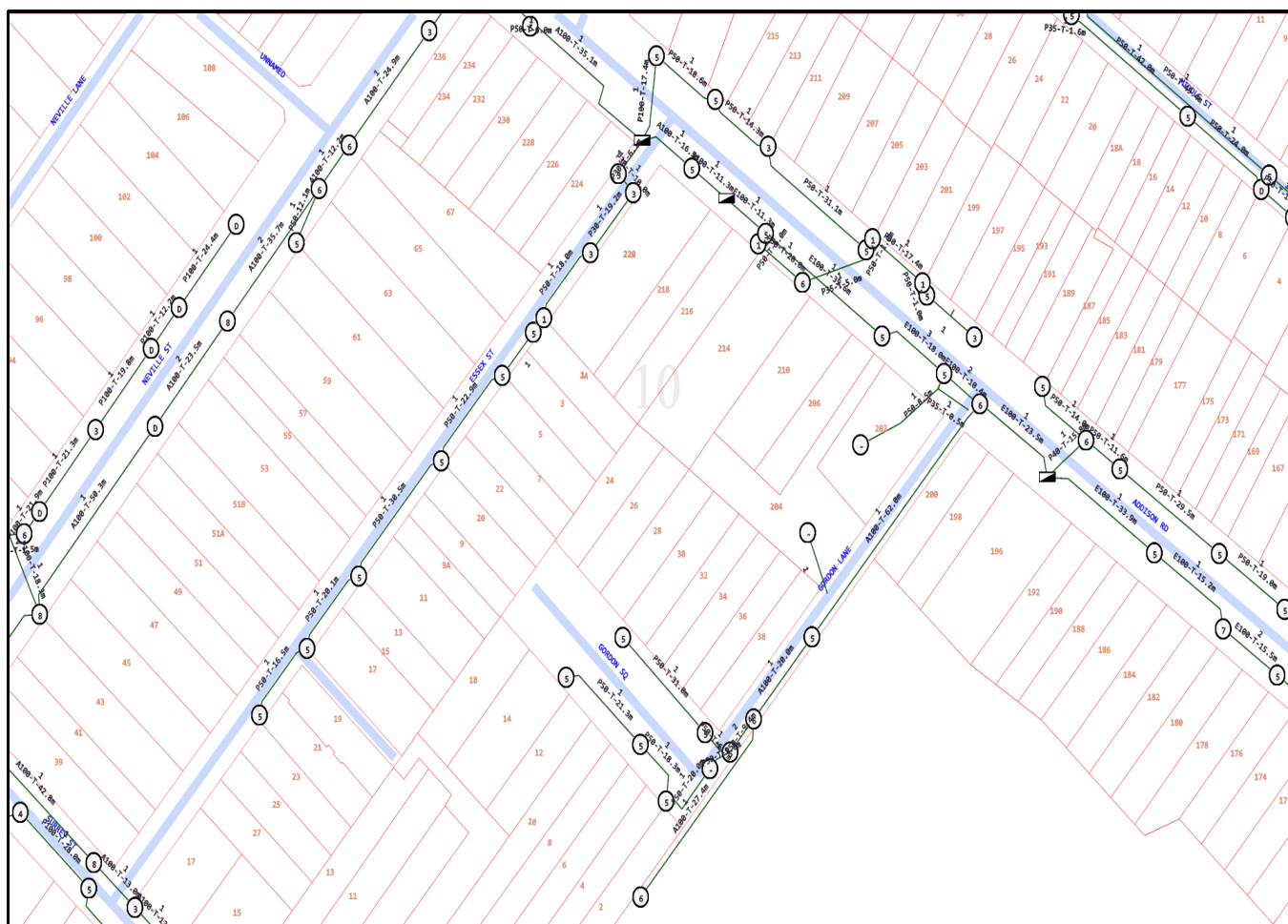


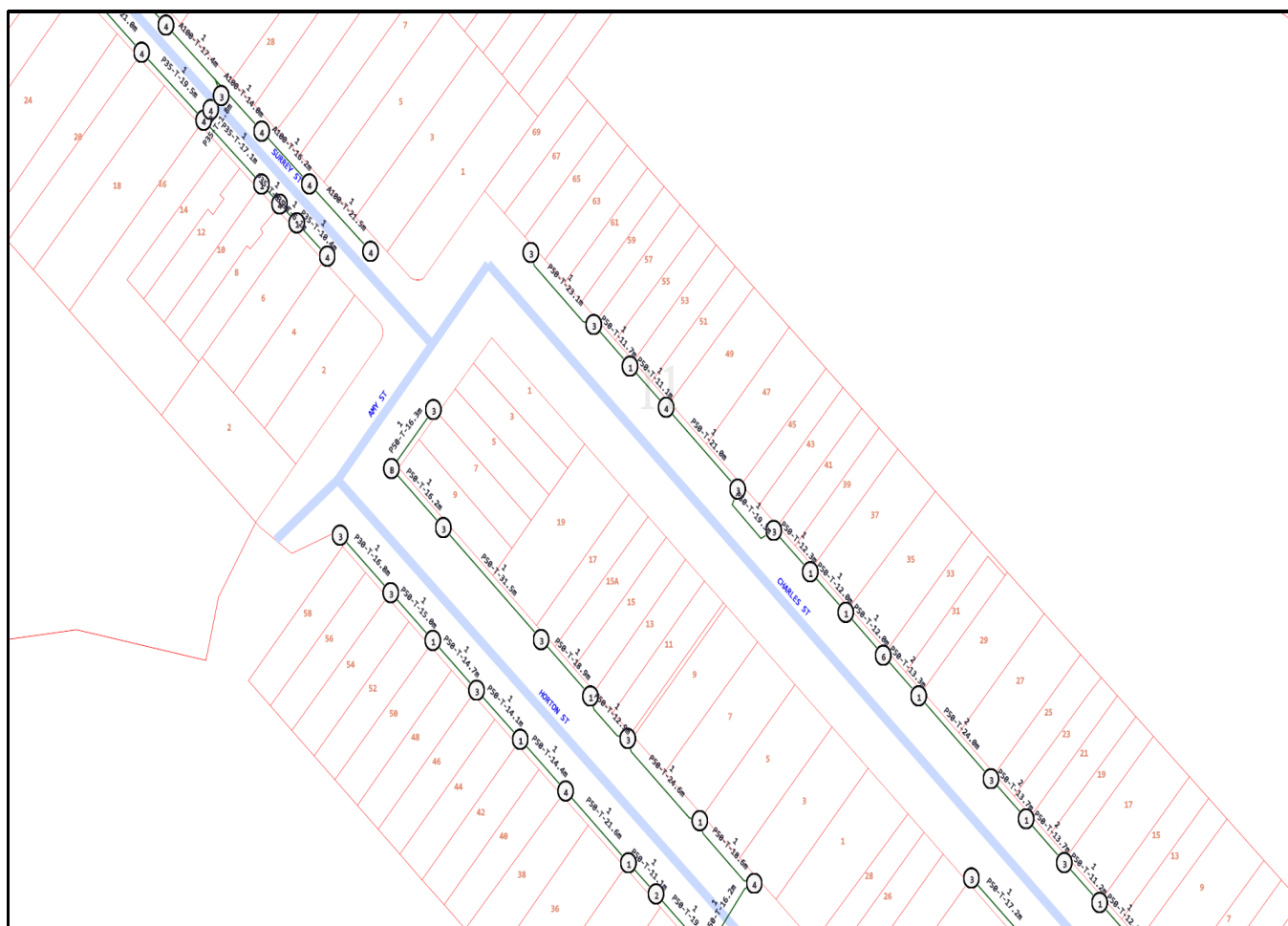


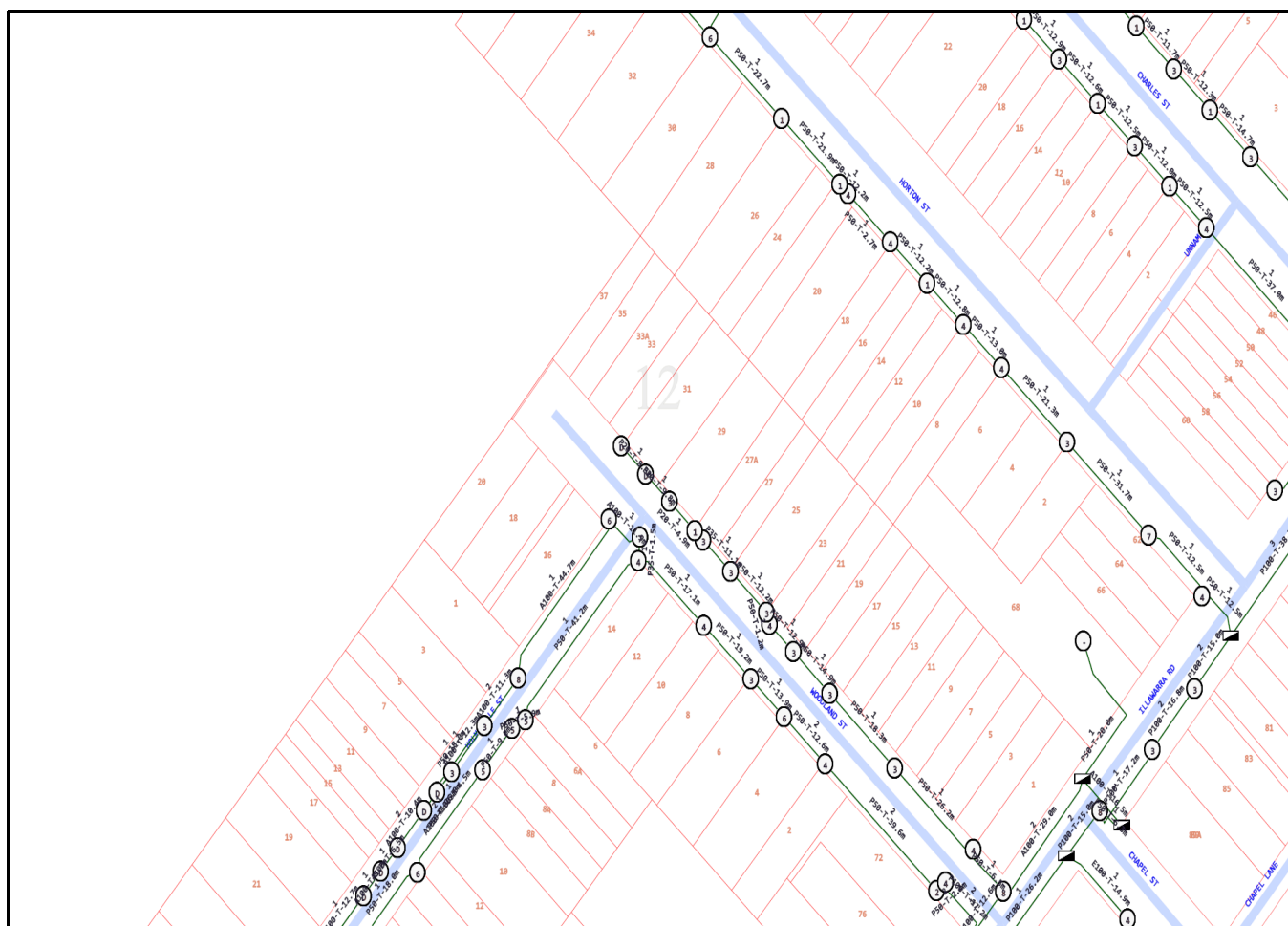


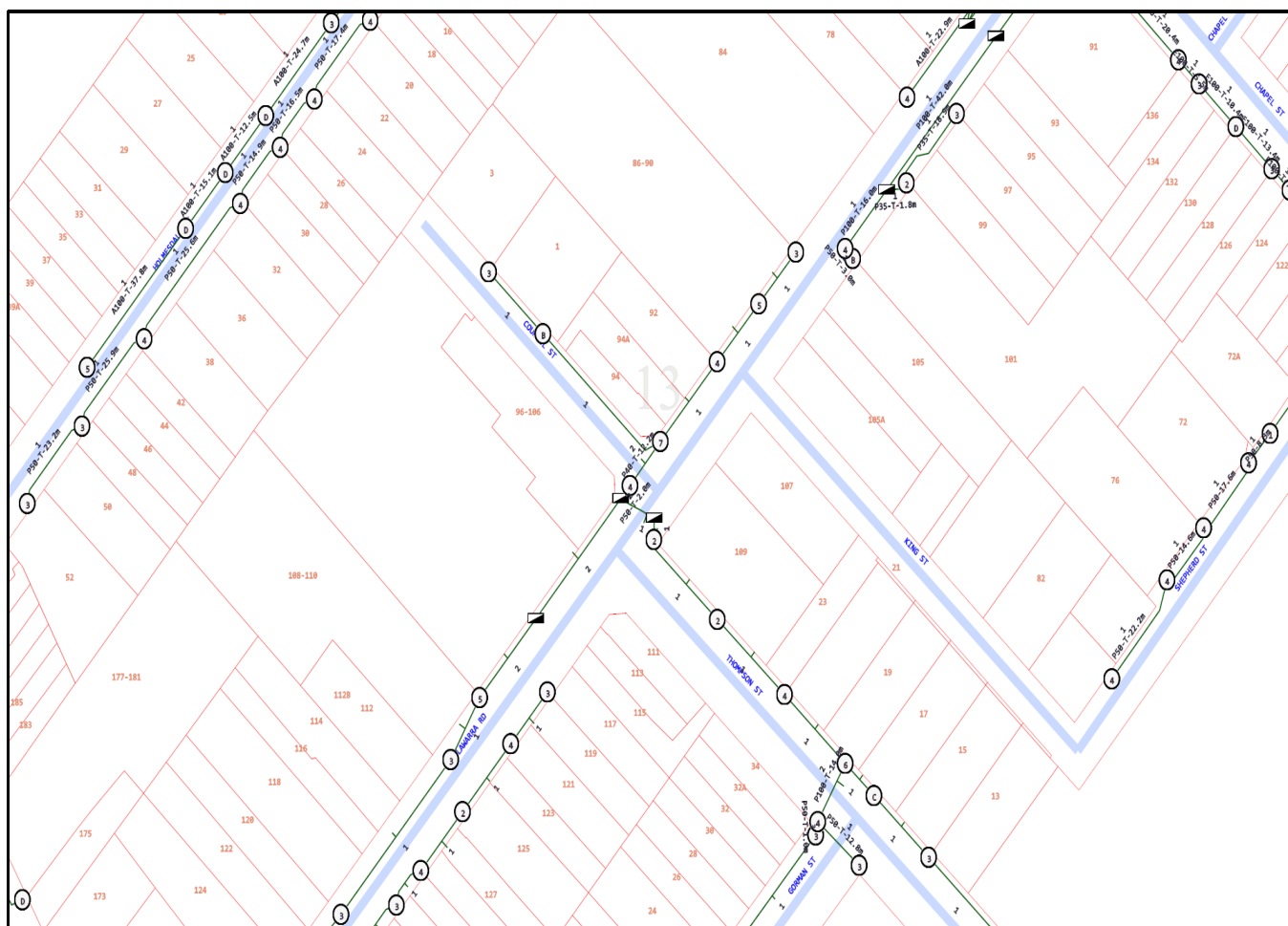


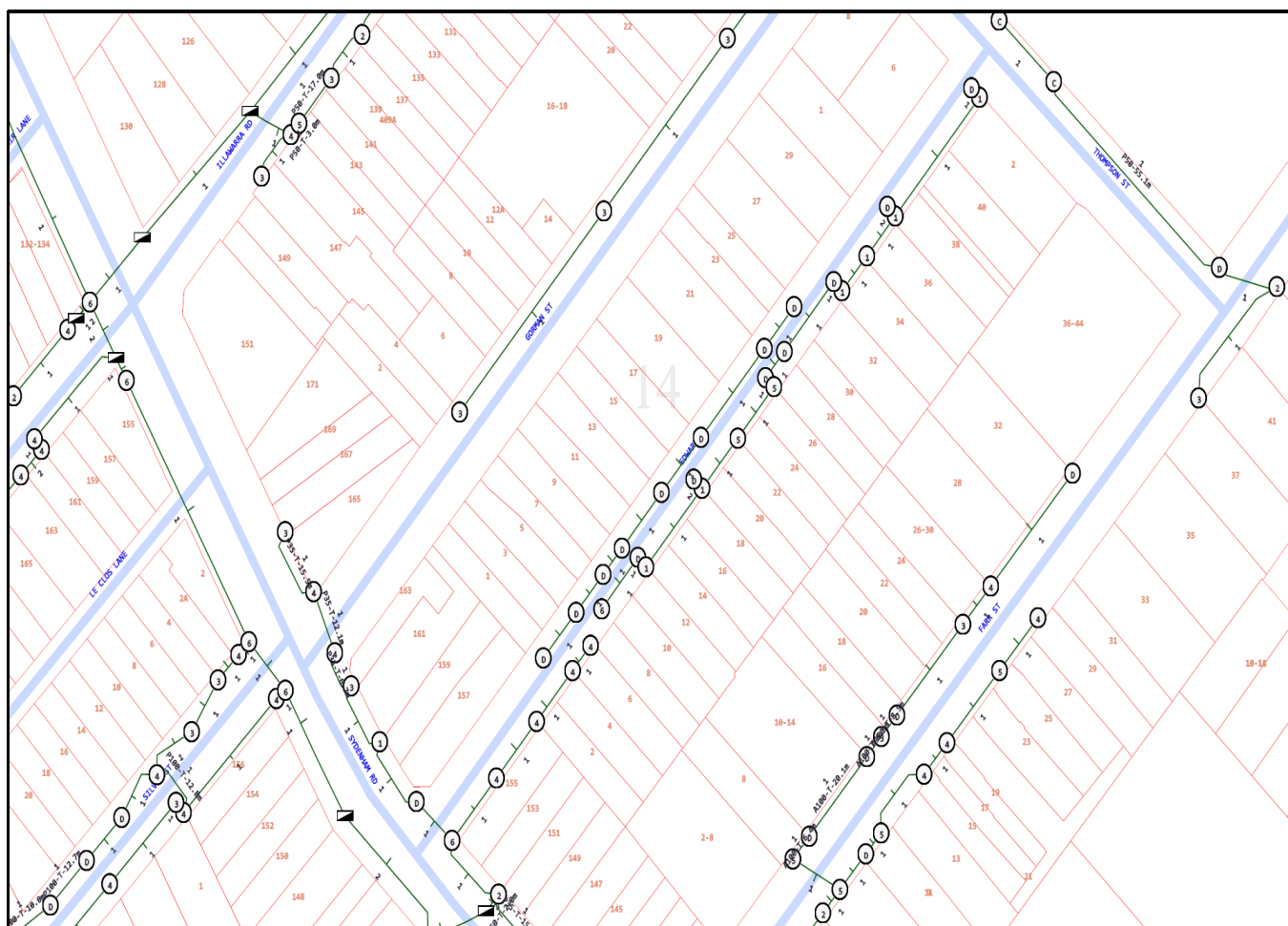


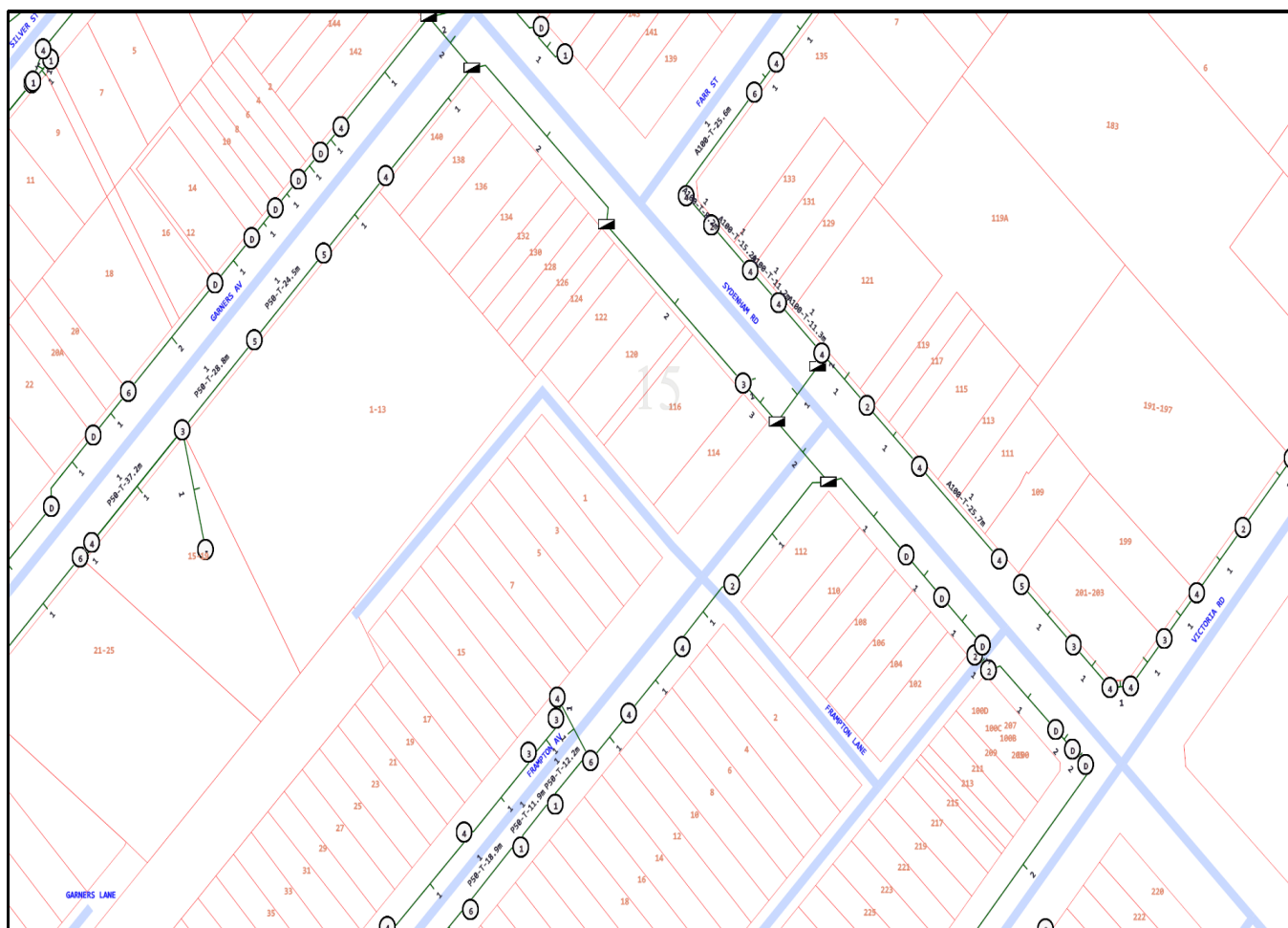


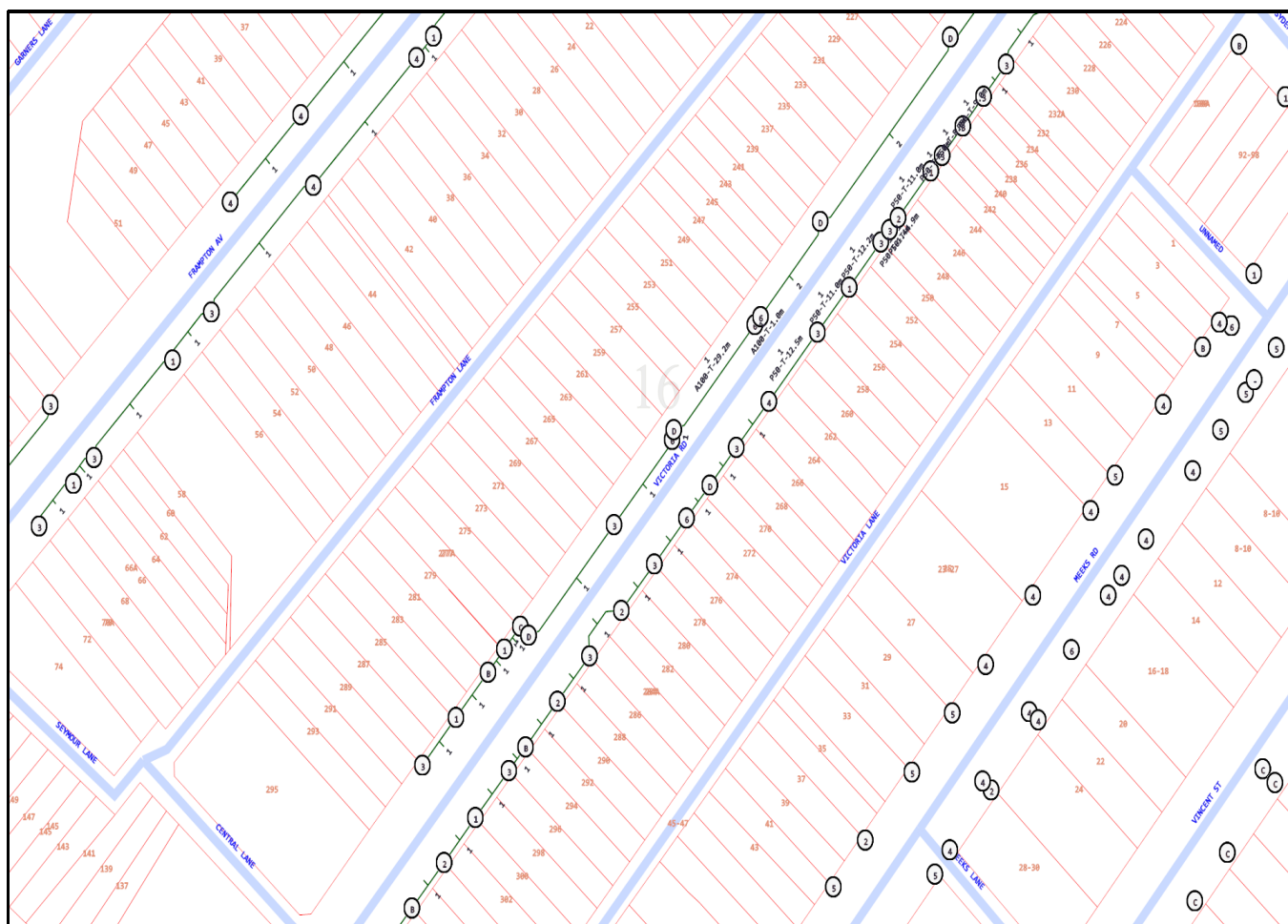


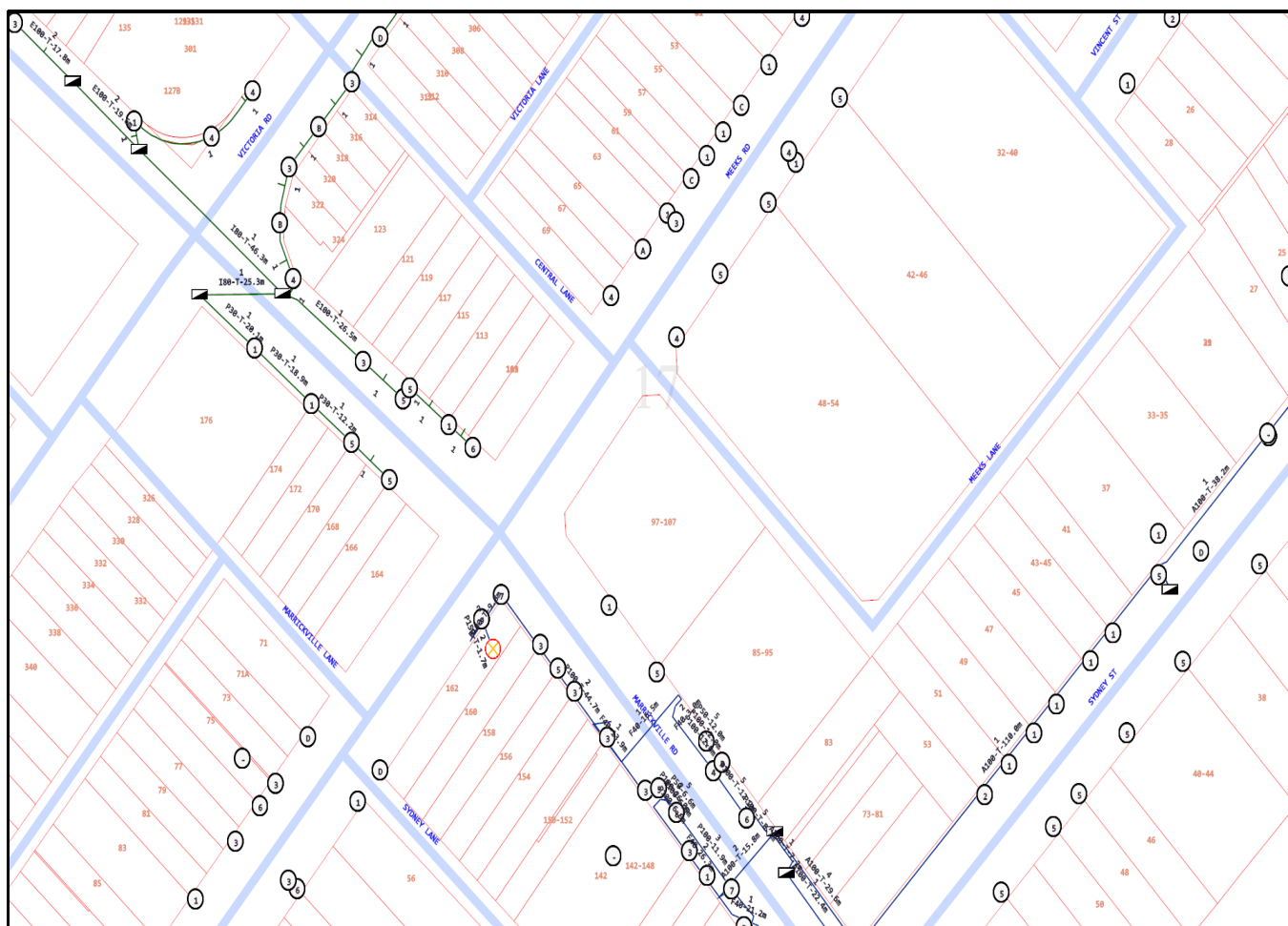












You must immediately report any damage to **nbn™** network that you are/become aware of. Notification may be by telephone - 1800 626 329.